

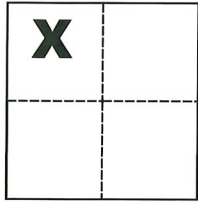
CORNER RECORD

Agency Index CR-21-083

Document Number _____

City of _____ County of San Joaquin, California

Brief Legal Description Parcels "A" and "B" per P.M. 2-167, S.J.C.R.



CORNER TYPE

Government Corner Control
Meander Property
Rancho Other

Date of Survey April 23, 2021

COORDINATES (Optional)

N. _____ E. _____

Elevation _____

Units Metric U.S. Survey Foot

Horizontal Datum _____

Zone _____ Epoch Date _____

Vertical Datum _____

Complies with Public Resources Code §§8801-8819

Complies with Public Resources Code §§8890-8902

Sec. 3, T.2S., R.6E.,
M.D.B. & M.

PLS Act Ref.: 8765(d) 8771 8773 Other:

Corner/Monument: Left as found Established Rebuilt Pre-Construction

Found and tagged Reestablished Referenced Post-Construction

Narrative of corner identified and monument as found, set, reset, replaced, or removed:

See sheet #2 for description(s):

SURVEYOR'S STATEMENT

This Corner Record was prepared by me or under my direction in conformance with

the Professional Land Surveyors' Act on May 25, 2021

Signed Michael L. Quastan P.L.S. or R.C.E. No. L.S. 4450



COUNTY SURVEYOR'S STATEMENT

This Corner Record was received June 4, 2021

and examined and filed June 22, 2021

Signed James E. Hart P.L.S. or R.C.E. No. 8657

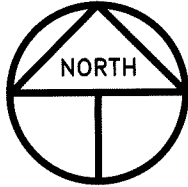
Title County Surveyor

County Surveyor's Comment



REFERENCES

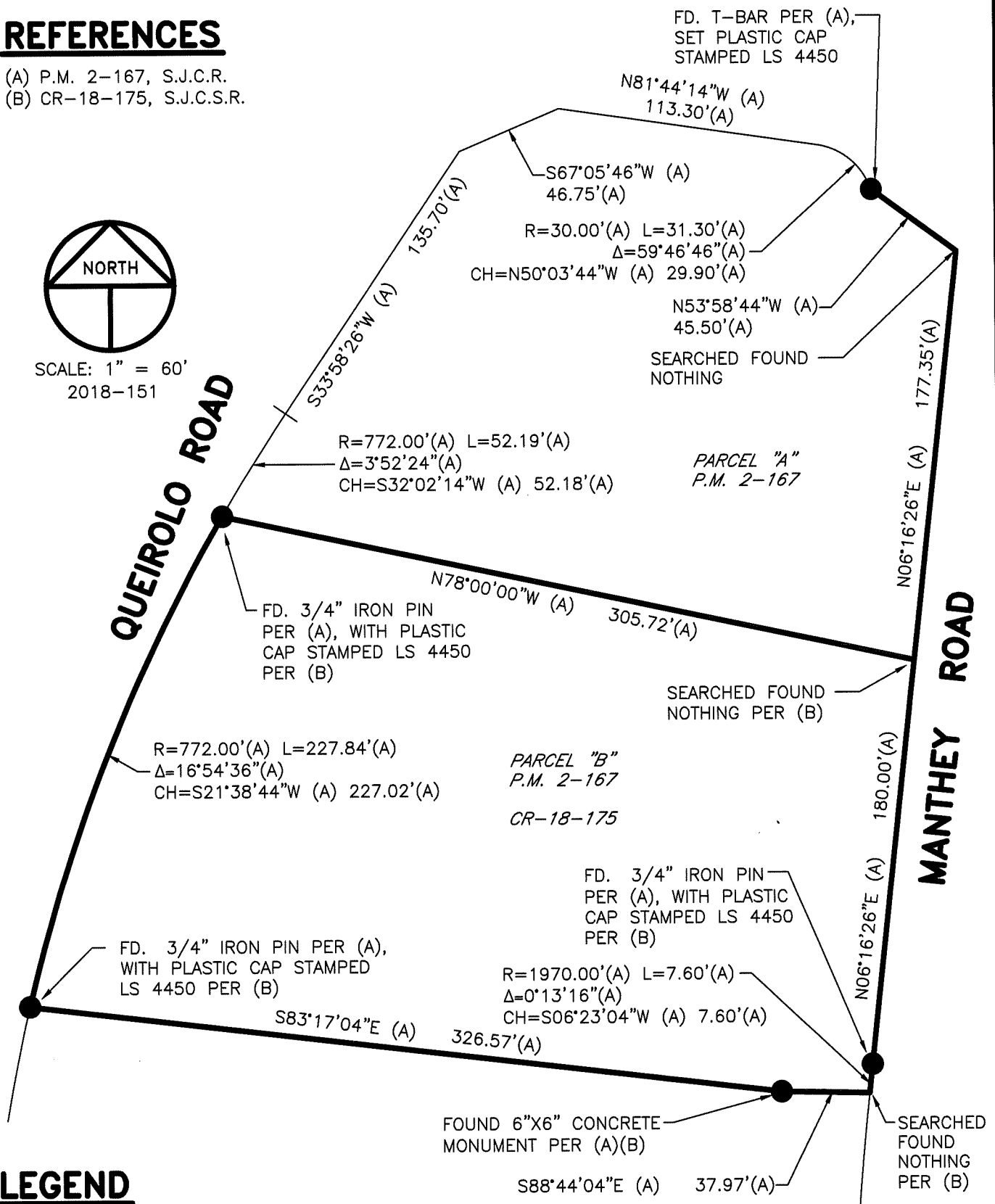
- (A) P.M. 2-167, S.J.C.R.
- (B) CR-18-175, S.J.C.S.R.



SCALE: 1" = 60'
2018-151

QUEIROLO ROAD

MANTHEY ROAD



LEGEND

- INDICATES FOUND MONUMENTS AS NOTED
- P.M. INDICATES PARCEL MAP, BOOK AND PAGE, S.J.C.R.
- S.J.C.R. INDICATES SAN JOAQUIN COUNTY RECORDS
- S.J.C.S.R. INDICATES SAN JOAQUIN COUNTY SURVEYOR'S RECORDS
- CR INDICATES CORNER RECORD, S.J.C.S.R.