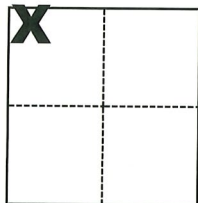


CORNER RECORD

Agency Index CR-21-081
Document Number _____

City of _____ County of San Joaquin, California
Brief Legal Description NGS Benchmark Z-957 (PID HS 0747)

CORNER TYPE



- Government Corner
- Meander
- Rancho
- Control
- Property
- Other

Date of Survey February 16, 2021

Sec. 2, T.2S., R.8E.,
M.D.B. & M.

COORDINATES (Optional)

N. 2113559 Ft. E. 6396883 Ft.
Elevation _____
Units Metric U.S. Survey Foot
Horizontal Datum NAD83
Zone SPC-3 Epoch Date _____
Vertical Datum _____
 Complies with Public Resources Code §§8801-8819
 Complies with Public Resources Code §§8890-8902

- PLS Act Ref.: 8765(d) 8771 8773 Other:
- Corner/Monument: Left as found Established Rebuilt Pre-Construction
 Found and tagged Reestablished Referenced Post-Construction

Narrative of corner identified and monument as found, set, reset, replaced, or removed:

See sheet #2 for description(s):

SPC - 3 coordinates listed are the result of Post Processing (differentially correcting) data that was logged from an Ashtech Mobile Mapper 10 handheld GPS receiver and are in the sub-meter accuracy range.

These Geodetic and Grid coordinates are provided for the purpose of facilitating locating the monument

Found as described in NGS Datasheet for Z-957 (PID HS 0747)

SURVEYOR'S STATEMENT

This Corner Record was prepared by me or under my direction in conformance with

the Professional Land Surveyors Act on May 25, 2021

Signed Michael L. Quartaroli P.L.S. or R.C.E. No. L.S. 4450



COUNTY SURVEYOR'S STATEMENT

This Corner Record was received June 4, 2021

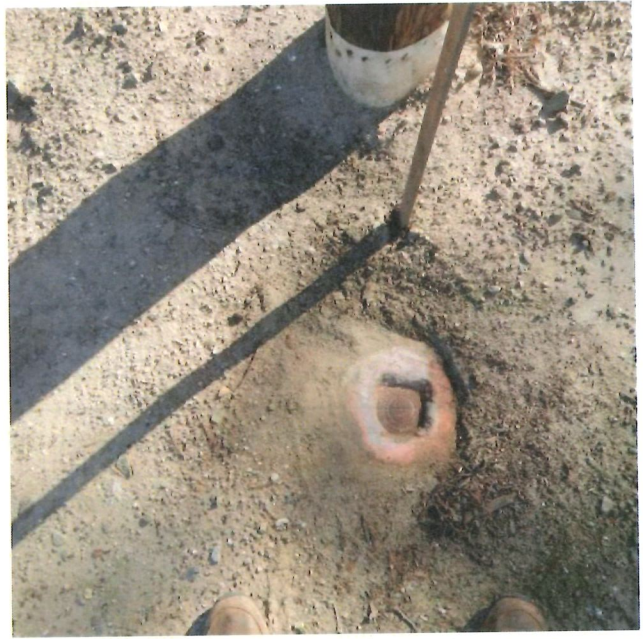
and examined and filed June 22, 2021

Signed James E. Hart P.L.S. or R.C.E. No. 8657

Title County Surveyor

County Surveyor's Comment





South Southeast of intersection of State Highway 120 and Carrolton Road