

CORNER RECORD

Agency Index CR-21-080

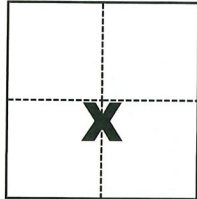
Document Number _____

City of Tracy County of San Joaquin, California

Brief Legal Description NGS Benchmark F-192 Reset (PID HS 0455)

CORNER TYPE

COORDINATES (Optional)



- Government Corner
- Meander
- Rancho
- Control
- Property
- Other

N. 2095323 Ft. E. 6282760 Ft.

Elevation _____

Units Metric U.S. Survey Foot

Horizontal Datum NAD83

Zone SPC-3 Epoch Date _____

Vertical Datum _____

Complies with Public Resources Code §§8801-8819

Complies with Public Resources Code §§8890-8902

Date of Survey February 5, 2021

Sec. 19, T.2S., R.5E.,
M.D.B. & M.

PLS Act Ref.: 8765(d) 8771 8773 Other:

Corner/Monument: Left as found Established Rebuilt Pre-Construction

Found and tagged Reestablished Referenced Post-Construction

Narrative of corner identified and monument as found, set, reset, replaced, or removed:

See sheet #2 for description(s):

SPC - 3 coordinates listed are the result of Post Processing (differentially correcting) data that was logged from an Ashtech Mobile Mapper 10 handheld GPS receiver and are in the sub-meter accuracy range.

These Geodetic and Grid coordinates are provided for the purpose of facilitating locating the monument

Found as described in NGS Datasheet for F-192 Reset (PID HS 0455)

SURVEYOR'S STATEMENT

This Corner Record was prepared by me or under my direction in conformance with

the Professional Land Surveyors' Act on May 25, 2021

Signed Michael L. Quarantoli P.L.S. or R.C.E. No. L.S. 4450



COUNTY SURVEYOR'S STATEMENT

This Corner Record was received June 4, 2021

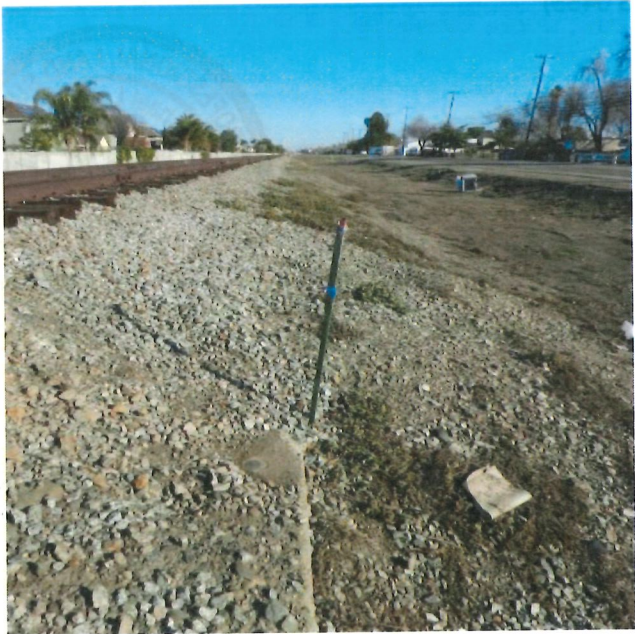
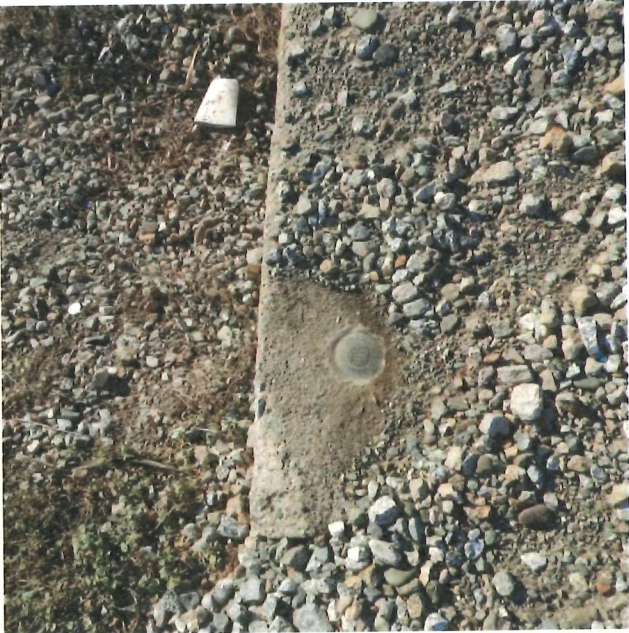
and examined and filed June 22, 2021

Signed James E. Hart P.L.S. or R.C.E. No. 8657

Title County Surveyor

County Surveyor's Comment





North side of Byron Road