

# CORNER RECORD

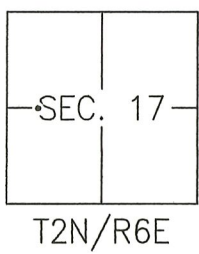
Agency Index CR-21-075

Document Number \_\_\_\_\_

City of STOCKTON  
California

County of SAN JOAQUIN

Brief Legal Description NORTHWEST CORNER OF PARCEL 4, 21-PM-153, S.J.C.R.



### CORNER TYPE

- Government Corner  Control   
 Meander  Property   
 Rancho  Other

Date of Survey 2021-01-15

### COORDINATES (Optional)

- N. \_\_\_\_\_ E. \_\_\_\_\_  
 Elevation \_\_\_\_\_  
 Units Metric  U.S. Survey Foot   
 Horizontal Datum \_\_\_\_\_  
 Zone \_\_\_\_\_ Epoch Date \_\_\_\_\_  
 Vertical Datum: \_\_\_\_\_  
 Complies with Public Resources Code §§8801-8819  
 Complies with Public Resources Code §§8890-8902

PLS Act Ref.:  8765(d)  8771  8773 Other: \_\_\_\_\_

Corner/Monument:  Left as found  Established  Rebuilt  Pre-Construction  
 Found and tagged  Reestablished  Referenced  Post-Construction

Narrative of corner identified and monument as found, set, reset, replaced, or removed:  
 See sheet #2 for description(s):

### SURVEYOR'S STATEMENT

This Corner Record was prepared by me or under my direction in conformance with  
 the Professional Land Surveyor's Act on FEBRUARY 1ST, 2021.

Signed [Signature] P.L.S. or R.C.E. No.: 8366



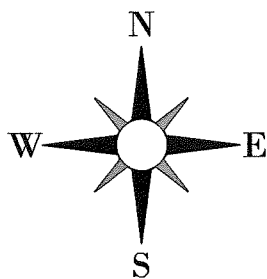
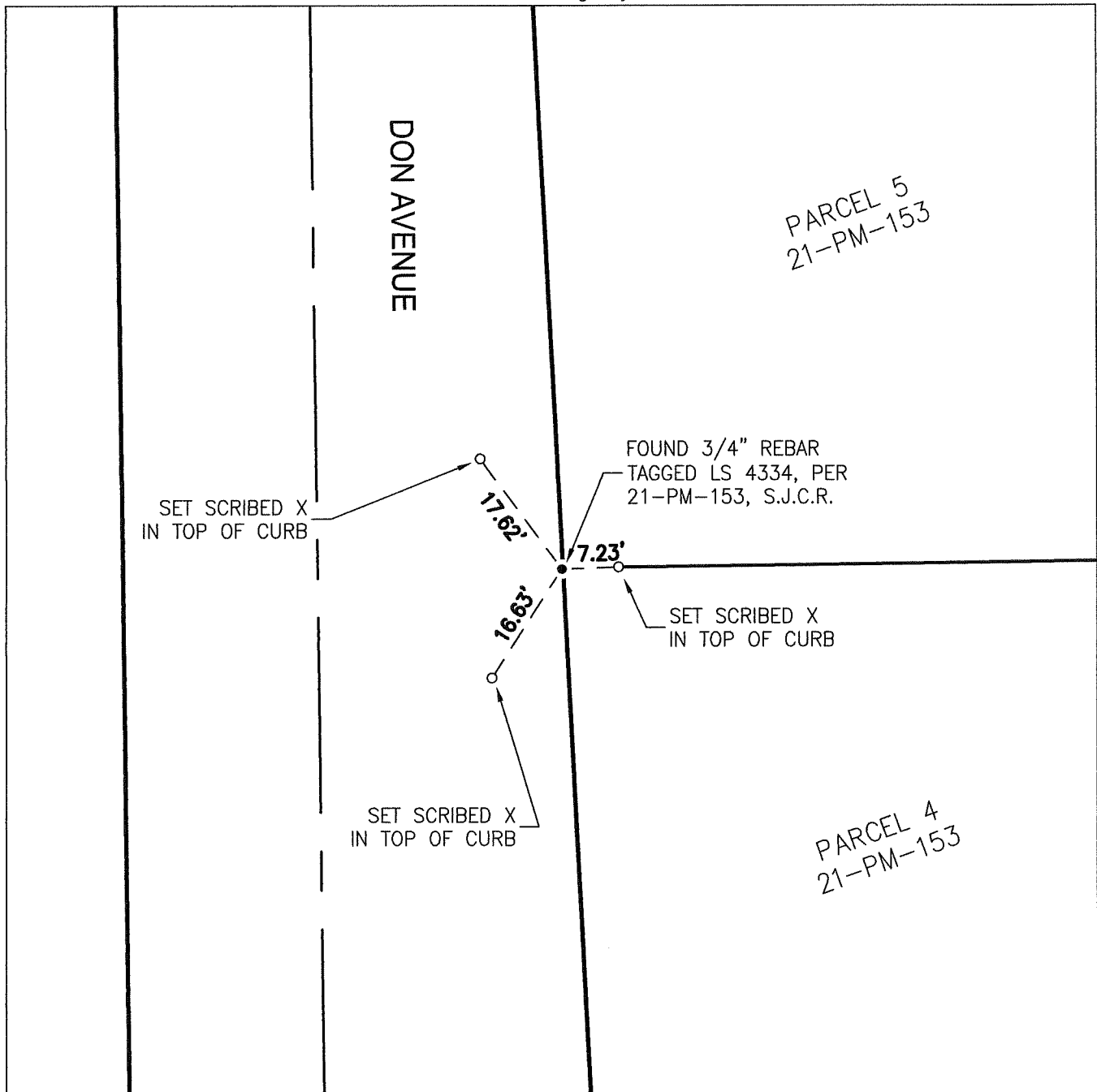
### COUNTY SURVEYOR'S STATEMENT

This Corner Record was received May 18, 2021 and examined  
 and filed June 10, 2021.

Signed James E. Hart P.L.S. or R.C.E. No.: 8657  
 Title County Surveyor



County Surveyor's Comment \_\_\_\_\_



LEGEND:

PM            PARCEL MAP  
S.J.C.R.      SAN JOAQUIN COUNTY RECORDS

