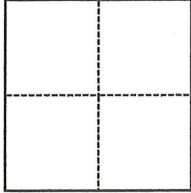


CORNER RECORD

Agency Index CR-21-074

Document Number _____

City of Stockton County of San Joaquin, CaliforniaBrief Legal Description Lot 145 of "Franciscan Plaza Unit No. 4" 17-M.&P.-129**CORNER TYPE****COORDINATES (Optional)**

- Government Corner Control
 Meander Property
 Rancho Other

Date of Survey April 9, 2021

N. _____ E. _____

Elevation _____

Units Metric U.S. Survey Foot

Horizontal Datum _____

Zone _____ Epoch Date _____

Vertical Datum _____

 Complies with Public Resources Code §§8801-8819 Complies with Public Resources Code §§8890-8902PLS Act Ref.: 8765(d) 8771 8773 Other:

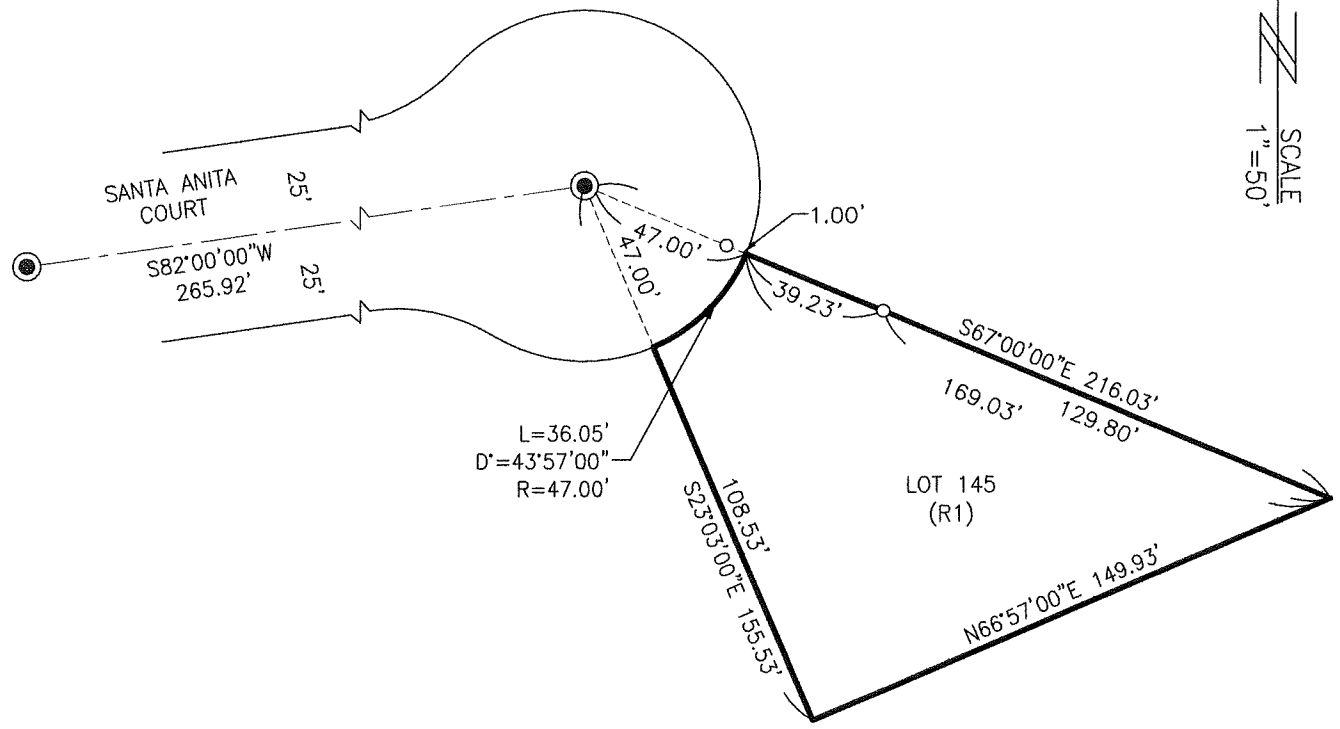
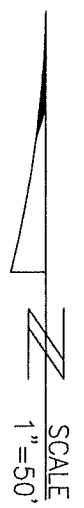
Corner/Monument: Left as found Established Rebuilt Pre-Construction
 Found and tagged Reestablished Referenced Post-Construction

Narrative of corner identified and monument as found, set, reset, replaced, or removed:

 See sheet #2 for description(s):**SURVEYOR'S STATEMENT**

This Corner Record was prepared by me or under my direction in conformance with

the Professional Land Surveyors' Act on May 18, 2021Signed _____ P.L.S. or R.C.E. No. 8080**COUNTY SURVEYOR'S STATEMENT**This Corner Record was received May 20, 2021and examined and filed June 8, 2021Signed James E. Hart P.L.S. or R.C.E. No. 8657Title County Surveyor**County Surveyor's Comment**



REFERENCES:
(R1) M.&P. 17-129, S.J.C.R.

- LEGEND:**
- S.J.C.R. SAN JOAQUIN COUNTY RECORDS
 - M.&P. MAPS & PLATS, VOLUME - PAGE, S.J.C.R.
 - SET STAKE TACK WITH BRASS TAG STAMPED LS8080 IN CONCRETE
 - FOUND 3/4" IRON PIN TAGGED R.C.E. 8189 IN MONUMENT WELL PER (R1)