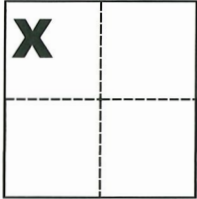


CORNER RECORD

Agency Index CR-21-071
Document Number _____

City of _____ County of San Joaquin, California
Brief Legal Description Southeasterly corner of Parcel No. 2 per R.S. 5-194, S.J.C.R.



CORNER TYPE
Government Corner Control
Meander Property
Rancho Other

COORDINATES (Optional)
N. _____ E. _____
Elevation _____
Units Metric U.S. Survey Foot
Horizontal Datum _____
Zone _____ Epoch Date _____
Vertical Datum _____

Date of Survey May 10, 2021

Sec. 24, T.1S., R.5E.,
M.D.B. & M.

Complies with Public Resources Code §§8801-8819
 Complies with Public Resources Code §§8890-8902

PLS Act Ref.: 8765(d) 8771 8773 Other:
Corner/Monument: Left as found Established Rebuilt Pre-Construction
 Found and tagged Reestablished Referenced Post-Construction

Narrative of corner identified and monument as found, set, reset, replaced, or removed:
 See sheet #2 for description(s):

SURVEYOR'S STATEMENT

This Corner Record was prepared by me or under my direction in conformance with
the Professional Land Surveyors' Act on May 13, 2021.

Signed Michael L. Quartaroli P.L.S. or R.C.E. No. L.S. 4450



COUNTY SURVEYOR'S STATEMENT

This Corner Record was received May 14, 2021
and examined and filed June 8, 2021.

Signed James E. Hart P.L.S. or R.C.E. No. 8657
Title County Surveyor

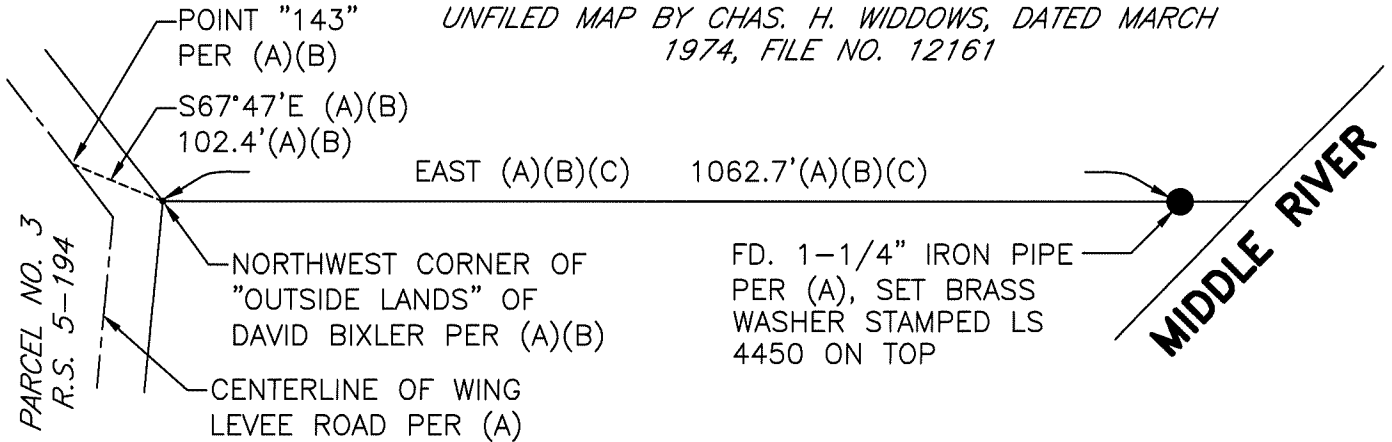
County Surveyor's Comment



PARCEL NO. 2
R.S. 5-194

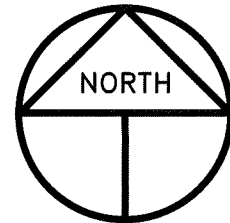
UNFILED MAP BY CHAS. H. WIDDOWS, DATED
DECEMBER 1970, FILE NO. 8230

UNFILED MAP BY CHAS. H. WIDDOWS, DATED MARCH
1974, FILE NO. 12161



REFERENCES

- (A) R.S. 5-194, S.J.C.R.
- (B) UNFILED MAP BY CHAS. H. WIDDOWS, DATED DECEMBER 1970, FILE NO. 8230.1, S.J.C.S.R.
- (C) UNFILED MAP BY CHAS. H. WIDDOWS, DATED MARCH 1974, FILE NO. 12161, S.J.C.S.R.



SCALE: 1" = 200'
2018-154 CR-1

LEGEND

- INDICATES FOUND MONUMENT AS NOTED
- FD. INDICATES FOUND ON THIS SURVEY
- R.S. INDICATES RECORD OF SURVEY, BOOK AND PAGE, S.J.C.R.
- S.J.C.R. INDICATES SAN JOAQUIN COUNTY RECORDS
- S.J.C.S.R. INDICATES SAN JOAQUIN COUNTY SURVEYORS RECORDS