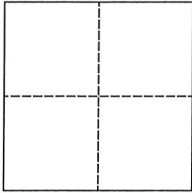


CORNER RECORD

Agency Index CR-21-066
 Document Number _____

City of _____ County of San Joaquin, California

Brief Legal Description Wilcox Road 430± s/o north end
Within Sec. 52, C.M. Weber Grant



CORNER TYPE

Government Corner Control
 Meander Property
 Rancho Other

COORDINATES (Optional)

N. _____ E. _____
 Elevation. _____
 Units Metric U.S. Survey Foot
 Horizontal Datum _____
 Zone _____ Epoch Date _____
 Vertical Datum _____

Date of Survey December 23, 2020

Complies with Public Resources Code §§8801-8819
 Complies with Public Resources Code §§8890-8902

PLS Act Ref.: 8765(d) 8771 8773 Other:

Corner/Monument: Left as found Established Rebuilt Pre-Construction
 Found and tagged Reestablished Referenced Post-Construction

Narrative of corner identified and monument as found, set, reset, replaced, or removed:
 See sheet #2 for description(s):

SURVEYOR'S STATEMENT

This Corner Record was prepared by me or under my direction in conformance with
 the Professional Land Surveyor's Act on March 18, 2021

Signed James E. Hart P.L.S. or R.C.E. No. 8657



COUNTY SURVEYOR'S STATEMENT

This Corner Record was received March 24, 2021

and examined and filed April 27, 2021

Signed James E. Hart P.L.S. or R.C.E. No. 8657

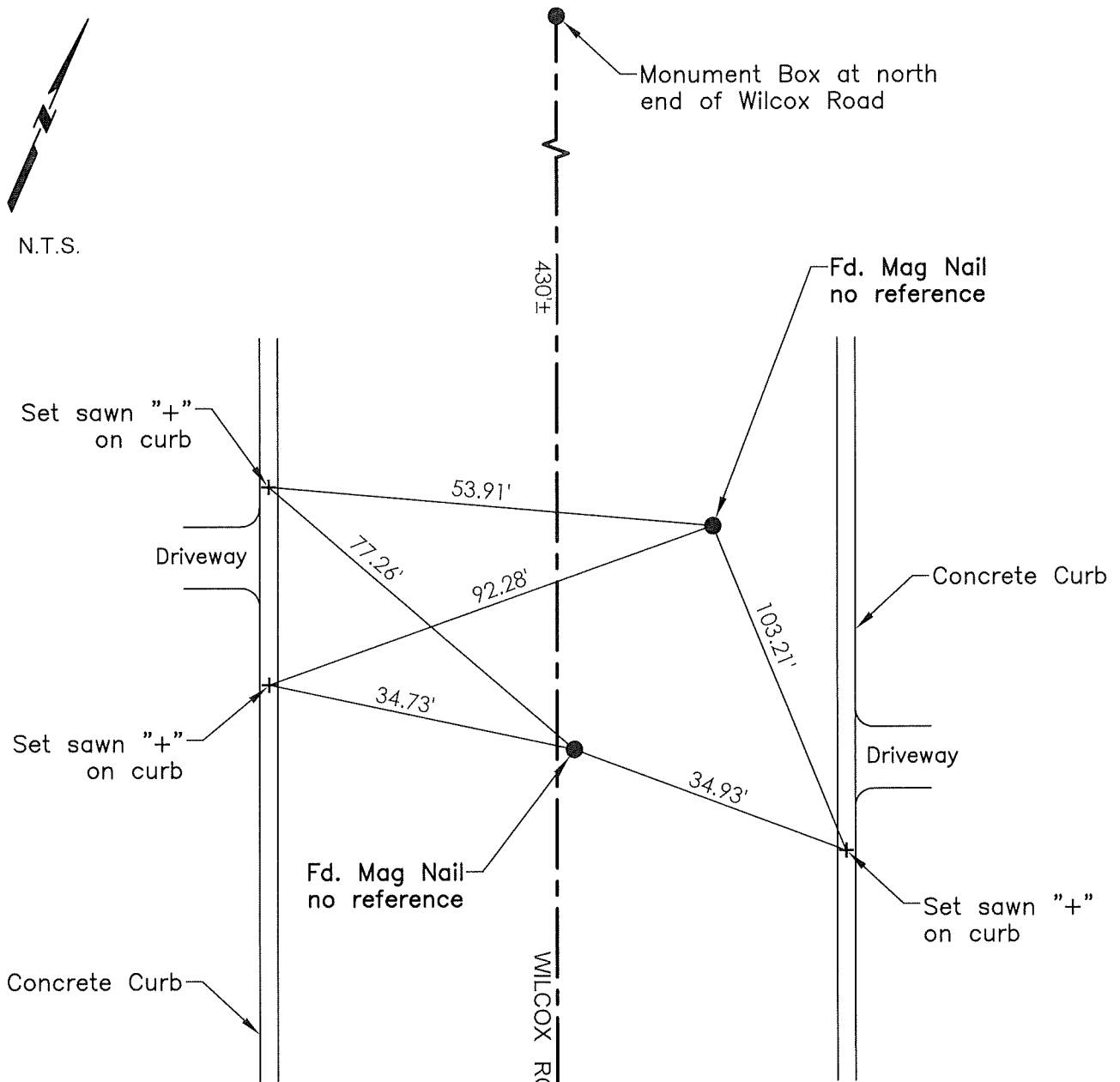
Title _____ County Surveyor

County Surveyor's Comment





N.T.S.



- TR=Tree
- MB=Mailbox
- BM=Bench Mark
- EP=Edge of Pavement
- YL=Yellow Line
- FH=Fire Hydrant
- CR=Corner Record
- FP=Fence Post
- JP=Joint Pole
- LP=Light Pole
- PP=Power Pole
- GP=Guy Pole
- SP=Service Pole
- TP=Telephone Pole
- S.F.N.=Searched Found Nothing
- N.T.S.=Not To Scale
- M&P=Maps & Plats
- PM=Parcel Map
- RS=Record of Survey
- FB=Field Book
- N=North
- SDI=Storm Drain Inlet
- TOC=Top of Curb
- PCC=Portland Cement Concrete

Set=Conc. Nail with Brass Washer stamped "S.J. Co.", unless otherwise noted

Fd.=Found Conc. Nail with Brass Washer stamped "S.J. Co.", unless otherwise noted

Note: Found Monuments are not tagged unless otherwise noted.

"No attempt was made to verify the Monument(s)"