

CORNER RECORD

Agency Index

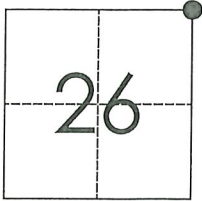
CR-21-053

Document Number

City of _____ County of San Joaquin, CaliforniaBrief Legal Description Van Allen Road @ Lone Tree Road

CORNER TYPE

COORDINATES (Optional)

T1S R8E
MDB&M
 Government Corner Control
 Meander Property
 Rancho Other

N. _____ E. _____

 Elevation. _____Units Metric U.S. Survey Foot Horizontal Datum _____

Zone _____ Epoch Date _____

Date of Survey November 13, 2020 Vertical Datum _____ Complies with Public Resources Code §§8801-8819 Complies with Public Resources Code §§8890-8902

PLS Act Ref.:

 8765(d) 8771 8773 Other:Corner/
Monument: Left as found Established Rebuilt Pre-Construction Found and tagged Reestablished Referenced Post-Construction

Narrative of corner identified and monument as found, set, reset, replaced, or removed:

 See sheet #2 for description(s):

SURVEYOR'S STATEMENT

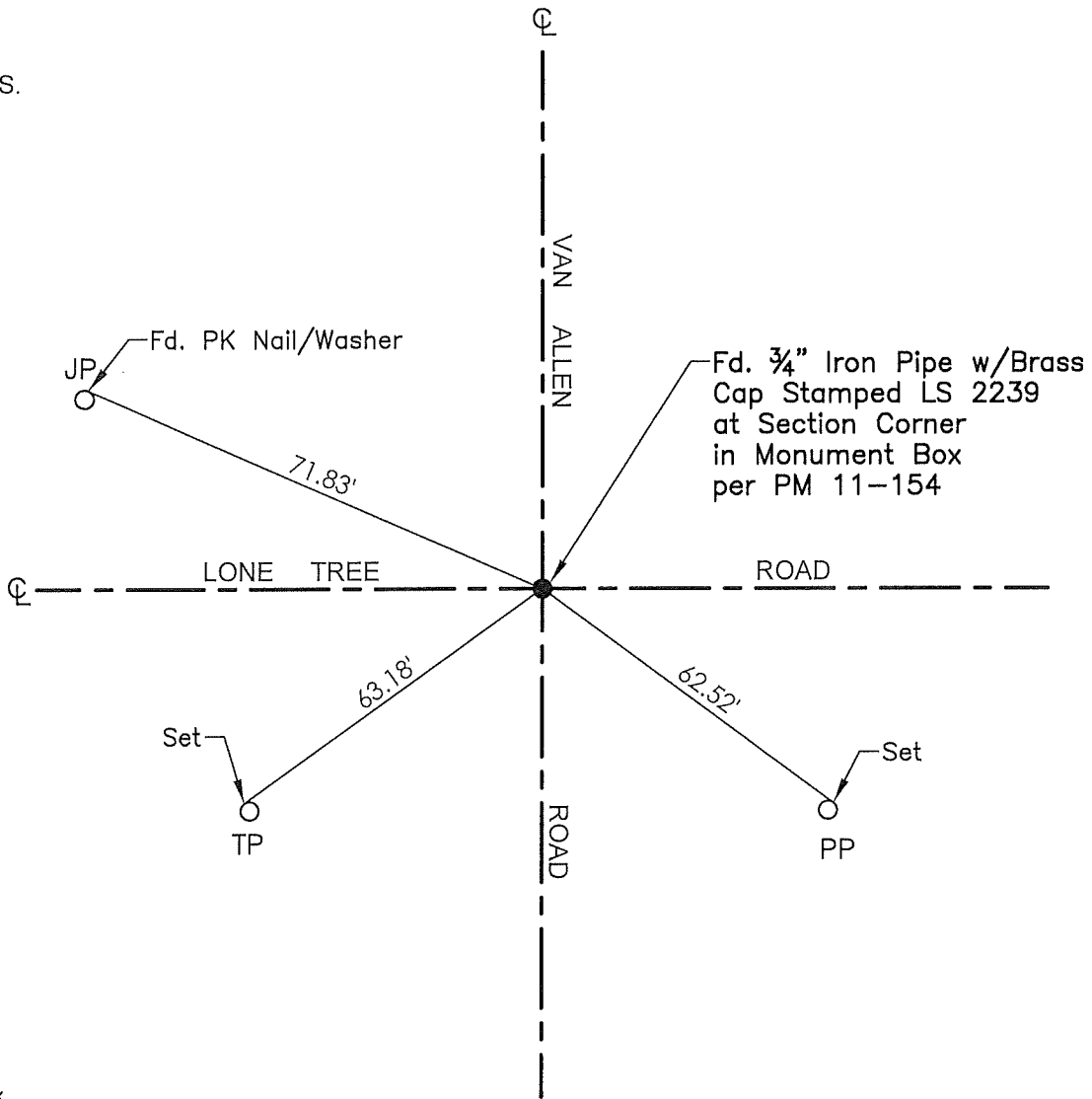
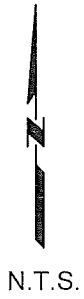
This Corner Record was prepared by me or under my direction in conformance with

the Professional Land Surveyor's Act on March 15, 2021Signed James E Hart P.L.S. or R.C.E. No. 8657

COUNTY SURVEYOR'S STATEMENT

This Corner Record was received May 10, 2021and examined and filed June 1, 2021Signed James E Hart P.L.S. or R.C.E. No. 8657Title County Surveyor

County Surveyor's Comment



- TR=Tree
- MB=Mailbox
- BM=Bench Mark
- EP=Edge of Pavement
- YL=Yellow Line
- FH=Fire Hydrant
- CR=Corner Record
- FP=Fence Post
- JP=Joint Pole
- LP=Light Pole
- PP=Power Pole
- GP=Guy Pole
- SP=Service Pole
- TP=Telephone Pole
- S.F.N.=Searched Found Nothing
- N.T.S.=Not To Scale
- M&P=Maps & Plats
- PM=Parcel Map
- RS=Record of Survey
- FB=Field Book
- N=North
- SDI=Storm Drain Inlet
- TOC=Top of Curb
- PCC=Portland Cement Concrete

Set=Conc. Nail with Brass Washer stamped "S.J. Co.", unless otherwise noted
 Fd.=Found Conc. Nail with Brass Washer stamped "S.J. Co.", unless otherwise noted
 Note: Found Monuments are not tagged unless otherwise noted.

"No attempt was made to verify the Monument(s)"