

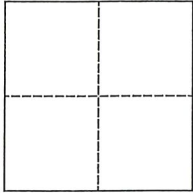
CORNER RECORD

Agency Index CR-21-050
 Document Number _____

City of _____ County of San Joaquin, California
 Brief Legal Description Briggs Road 465'± west of Manthey Road
Within Sec. 03, C.M. Weber Grant

CORNER TYPE

COORDINATES (Optional)



Government Corner Control Elevation. _____
 Meander Property Units Metric U.S. Survey Foot
 Rancho Other Horizontal Datum _____
 Date of Survey October 29, 2020 Zone _____ Epoch Date _____
 Vertical Datum _____
 Complies with Public Resources Code §§8801-8819
 Complies with Public Resources Code §§8890-8902

PLS Act Ref.: 8765(d) 8771 8773 Other:
 Corner/Monument: Left as found Established Rebuilt Pre-Construction
 Found and tagged Reestablished Referenced Post-Construction

Narrative of corner identified and monument as found, set, reset, replaced, or removed:
 See sheet #2 for description(s):

SURVEYOR'S STATEMENT

This Corner Record was prepared by me or under my direction in conformance with
 the Professional Land Surveyor's Act on February 18, 2021
 Signed James E Hart P.L.S. or R.C.E. No. 8657



COUNTY SURVEYOR'S STATEMENT

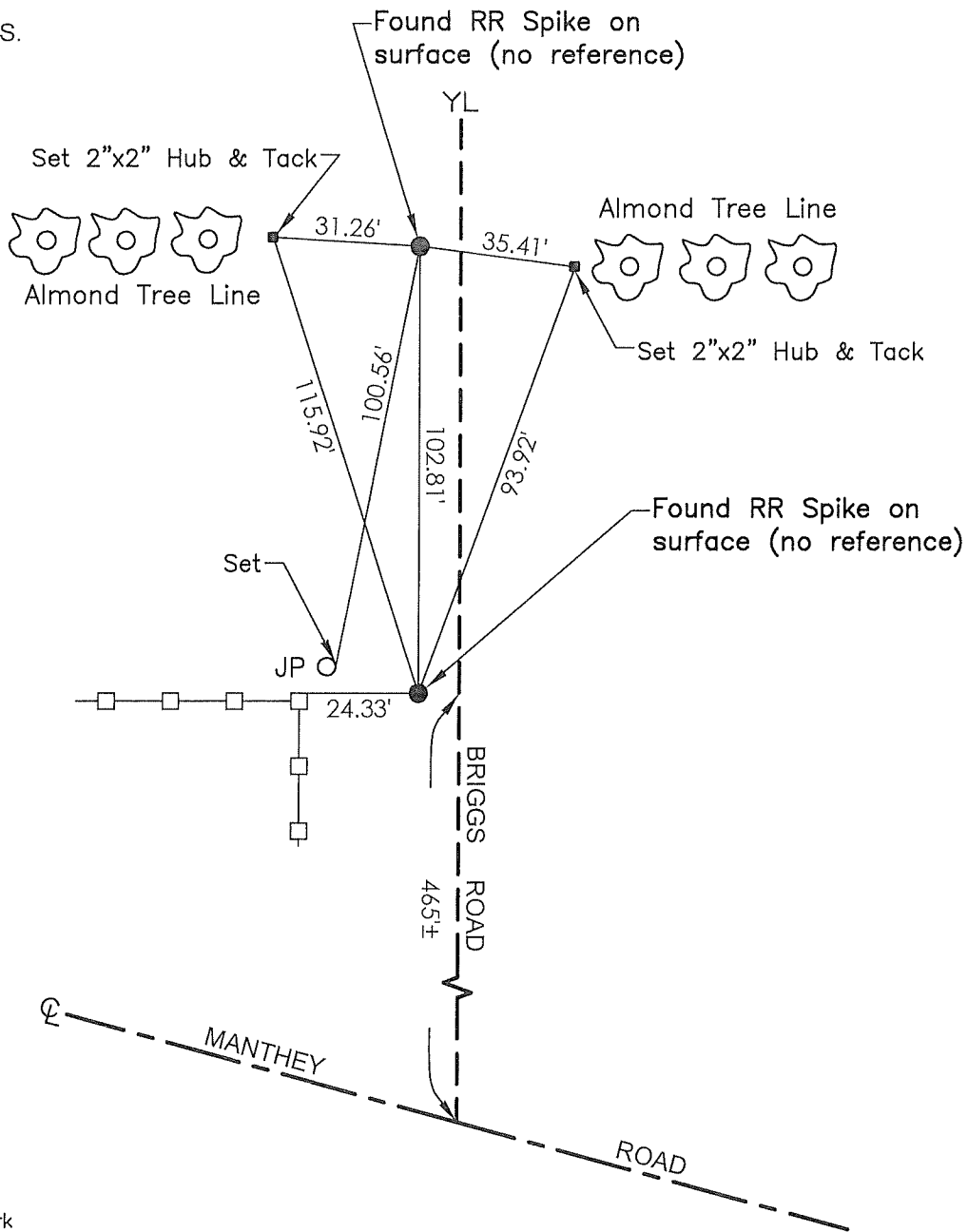
This Corner Record was received May 10, 2021
 and examined and filed June 1, 2021
 Signed James E Hart P.L.S. or R.C.E. No. 8657
 Title County Surveyor



County Surveyor's Comment



N.T.S.



- TR=Tree
- MB=Mailbox
- BM=Bench Mark
- EP=Edge of Pavement
- YL=Yellow Line
- FH=Fire Hydrant
- CR=Corner Record
- FP=Fence Post
- JP=Joint Pole
- LP=Light Pole
- PP=Power Pole
- GP=Guy Pole
- SP=Service Pole
- TP=Telephone Pole
- S.F.N.=Searched Found Nothing
- N.T.S.=Not To Scale
- M&P=Maps & Plats
- PM=Parcel Map
- RS=Record of Survey
- FB=Field Book
- N=North
- SDI=Storm Drain Inlet
- TOC=Top of Curb
- PCC=Portland Cement Concrete

Set=Conc. Nail with Brass Washer stamped "S.J. Co.", unless otherwise noted
 Fd.=Found Conc. Nail with Brass Washer stamped "S.J. Co.", unless otherwise noted
 Note: Found Monuments are not tagged unless otherwise noted.

"No attempt was made to verify the Monument(s)"