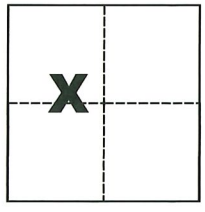


CORNER RECORD

Agency Index CR-21-039
 Document Number _____

City of _____ County of San Joaquin, California
 Brief Legal Description Being the 1.01 Acre parcel per R.S. 19-111, S.J.C.R.



CORNER TYPE

Government Corner Control
 Meander Property
 Rancho Other

Date of Survey February 13, 2020

COORDINATES (Optional)

N. _____ E. _____
 Elevation _____
 Units Metric U.S. Survey Foot
 Horizontal Datum _____
 Zone _____ Epoch Date _____
 Vertical Datum _____
 Complies with Public Resources Code §§8801-8819
 Complies with Public Resources Code §§8890-8902

Sec. 66, C.M. Weber Grant

PLS Act Ref.: 8765(d) 8771 8773 Other: _____

Corner/Monument: Left as found Established Rebuilt Pre-Construction
 Found and tagged Reestablished Referenced Post-Construction

Narrative of corner identified and monument as found, set, reset, replaced, or removed:
 See sheet #2 for description(s):

SURVEYOR'S STATEMENT

This Corner Record was prepared by me or under my direction in conformance with the Professional Land Surveyors' Act on April 29, 2021.
 Signed Michael L. Quattori P.L.S. or R.C.E. No. L.S. 4450



COUNTY SURVEYOR'S STATEMENT

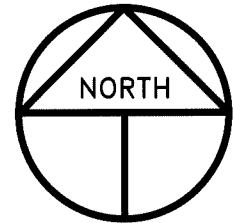
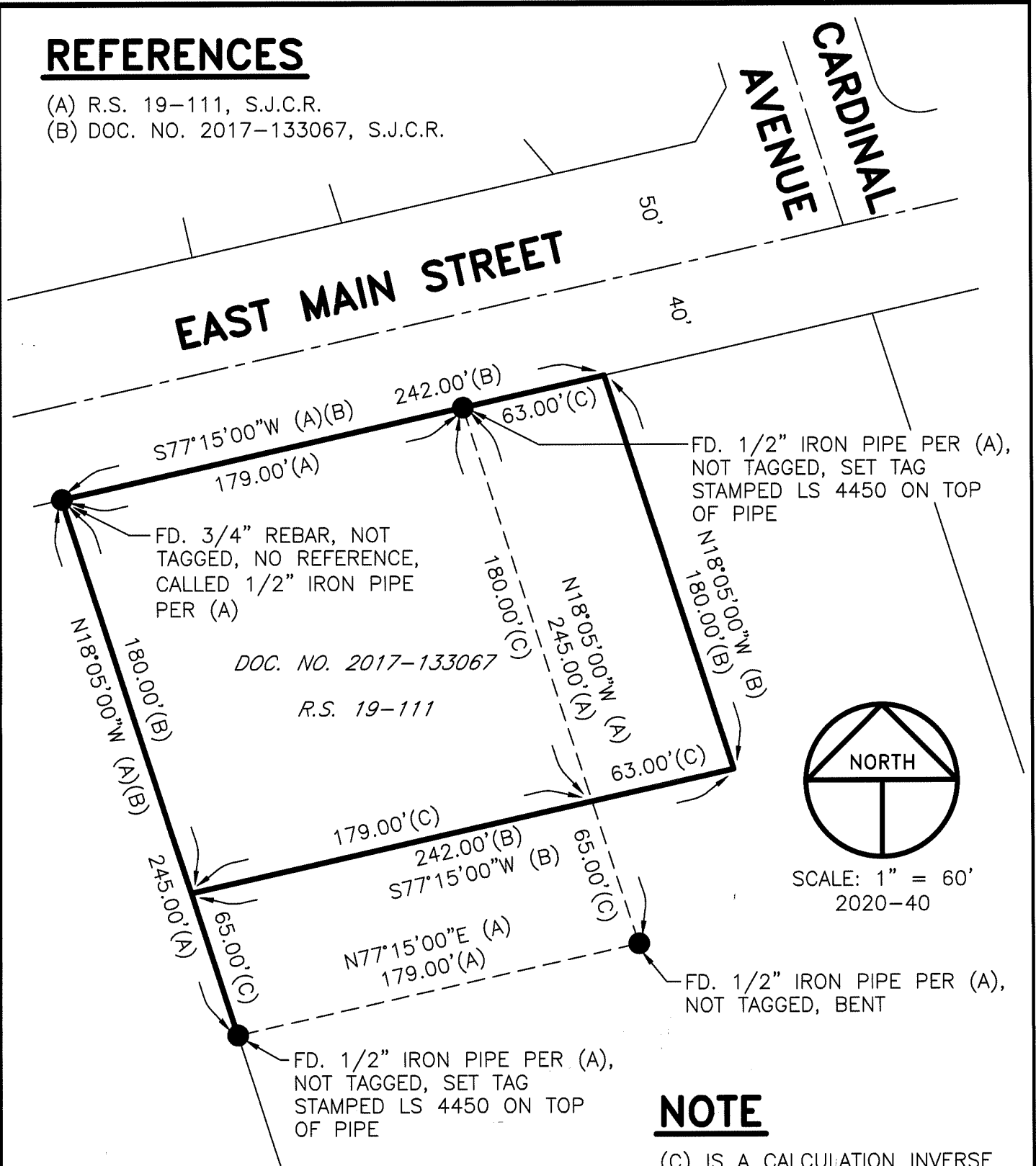
This Corner Record was received April 30, 2021 and examined and filed May 11, 2021.
 Signed James E. Hart P.L.S. or R.C.E. No. 8657
 Title County Surveyor



County Surveyor's Comment _____

REFERENCES

- (A) R.S. 19-111, S.J.C.R.
- (B) DOC. NO. 2017-133067, S.J.C.R.



SCALE: 1" = 60'
2020-40

NOTE

(C) IS A CALCULATION INVERSE BETWEEN (A) AND (B)

LEGEND

- INDICATES FOUND MONUMENT AS NOTED
- S.J.C.R. INDICATES SAN JOAQUIN COUNTY RECORDS
- R.S. INDICATES RECORD OF SURVEY, BOOK AND PAGE, S.J.C.R.
- DOC. NO. INDICATES DOCUMENT NUMBER, S.J.C.R.
- (C) INDICATES CALCULATED