

# CORNER RECORD

Agency Index CR-21-037

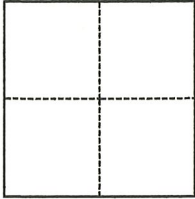
Document Number \_\_\_\_\_

City of \_\_\_\_\_ County of San Joaquin, California

Brief Legal Description Parcel A, 12 PM 130

### CORNER TYPE

### COORDINATES (Optional)



- Government Corner
- Meander
- Rancho
- Control
- Property
- Other

Date of Survey March 3, 2021

N. \_\_\_\_\_ E. \_\_\_\_\_

Elevation \_\_\_\_\_

Units  Metric  U.S. Survey Foot

Horizontal Datum \_\_\_\_\_

Zone \_\_\_\_\_ Epoch Date \_\_\_\_\_

Vertical Datum \_\_\_\_\_

Complies with Public Resources Code §§8801-8819

Complies with Public Resources Code §§8890-8902

PLS Act Ref.:  8765(d)  8771  8773  Other:

Corner/Monument:  Left as found  Established  Rebuilt  Pre-Construction

Found and tagged  Reestablished  Referenced  Post-Construction

Narrative of corner identified and monument as found, set, reset, replaced, or removed:

See sheet #2 for description(s):

### SURVEYOR'S STATEMENT

This Corner Record was prepared by me or under my direction in conformance with the Professional Land Surveyors' Act on April 19, 2021

Signed Brett Chappell P.L.S. or R.C.E. No. 7547



### COUNTY SURVEYOR'S STATEMENT

This Corner Record was received April 23, 2021

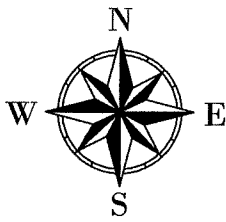
and examined and filed May 6, 2021

Signed James E. Hart P.L.S. or R.C.E. No. 8657

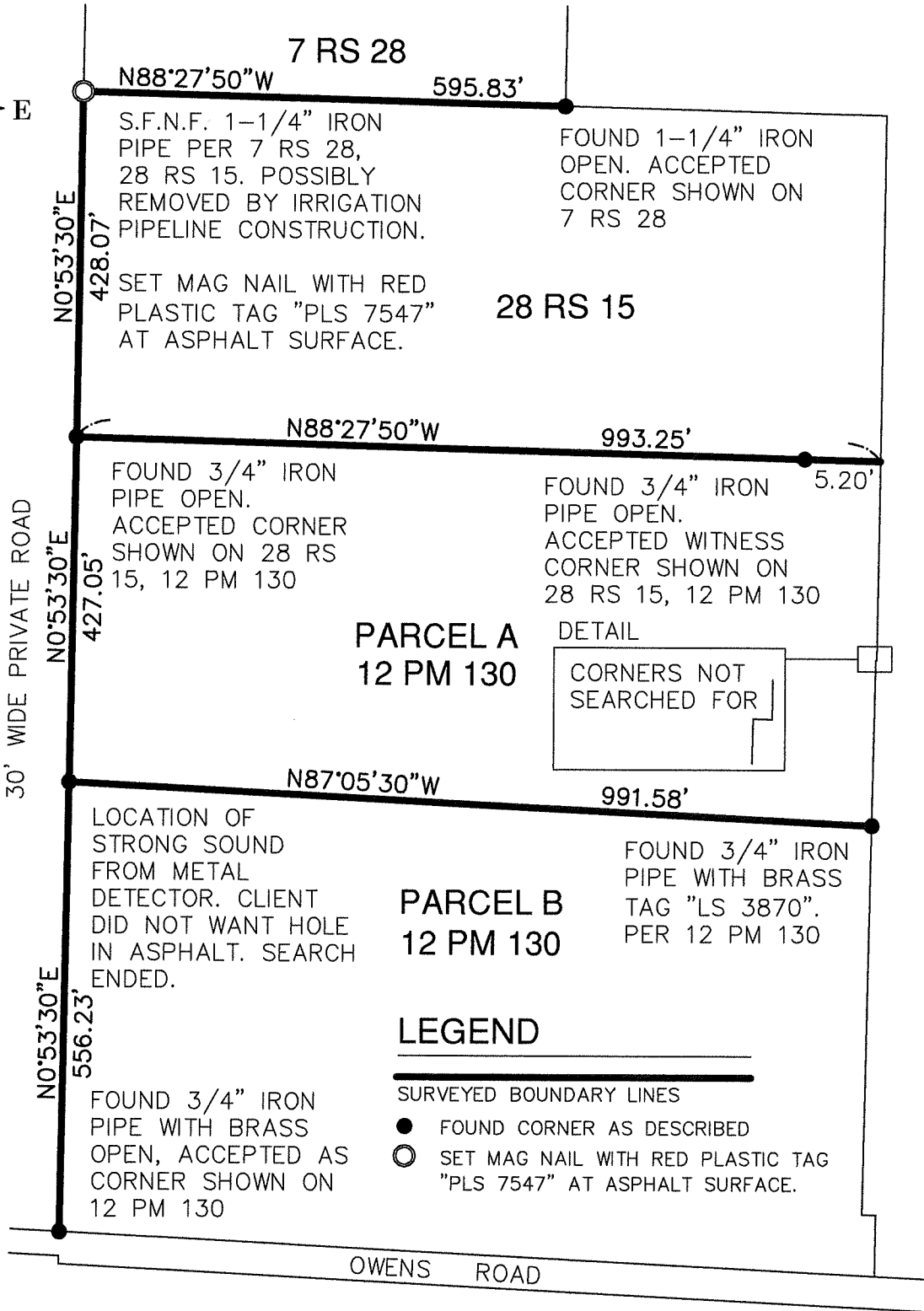
Title County Surveyor

County Surveyor's Comment





CENTERLINE OF  
 HASKELL LANE  
 30' WIDE PRIVATE ROAD



RS RECORD OF SURVEY, S.J.C.R.  
 PM PARCEL MAP, S.J.C.R.  
 S.J.C.R. SAN JOAQUIN COUNTY RECORDS  
 S.F.N.F. SEARCHED FOR, NOT FOUND