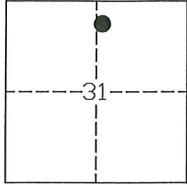


CORNER RECORD

Agency Index: CR-21-036
Document Number: _____

City of STOCKTON County of SAN JOAQUIN, California
Brief Legal Description MONUMENT NEAR THE INTERSECTION OF WILSON WAY AND BRADFORD STREET.



C.M. WEBER GRANT

CORNER TYPE

- Government Corner
- Meander
- Rancho
- Control
- Property
- Other

Date of Survey 03-01-2021

COORDINATES (Optional)

N. 2178093.61 E. 6337878.15
 Elevation 18.64'
 Units Metric U.S. Survey Foot
 Horizontal Datum NAD83
 Zone 3 Epoch Date 1991.35
 Vertical Datum NAVD88
 Complies with Public Resources Code §§8801-8819
 Complies with Public Resources Code §§8890-8902

PLS Act Ref: 8765(d) 8771 8773 Other:

Corner/Monument: Left as found Established Rebuilt Pre-Construction
 Found and Tagged Reestablished Referenced Post-Construction

Narrative of corner identified and monument as found, set, reset, replaced, or removed:

See sheet #2 for description(s):

FOUND ONE (1) 2 1/2" BRASS DISK MARKING COS BENCHMARK # 424 STAMPED "14S-7 LS 6670" 5 FEET EAST OF THE WEST CURB ON WILSON WAY APPROXIMATELY 100 FEET NORTH OF BRADFORD STREET AS SHOWN IN RECORD OF SURVEY FILED FOR RECORD IN BOOK 35 OF SURVEYS AT PAGE 5. SET THREE (3) CONCRETE NAILS WITH BRASS TAG STAMPED "L.S. 6953" AS WITNESS CORNERS, ALL AS SHOWN ON PAGE 2.

SURVEYOR'S STATEMENT

This Corner Record was prepared by me or under my direction in conformance with the Land Surveyors' Act on MARCH 19, 2021,



Signed [Signature] P.L.S. or R.C.E. Number 6953

COUNTY SURVEYOR'S STATEMENT

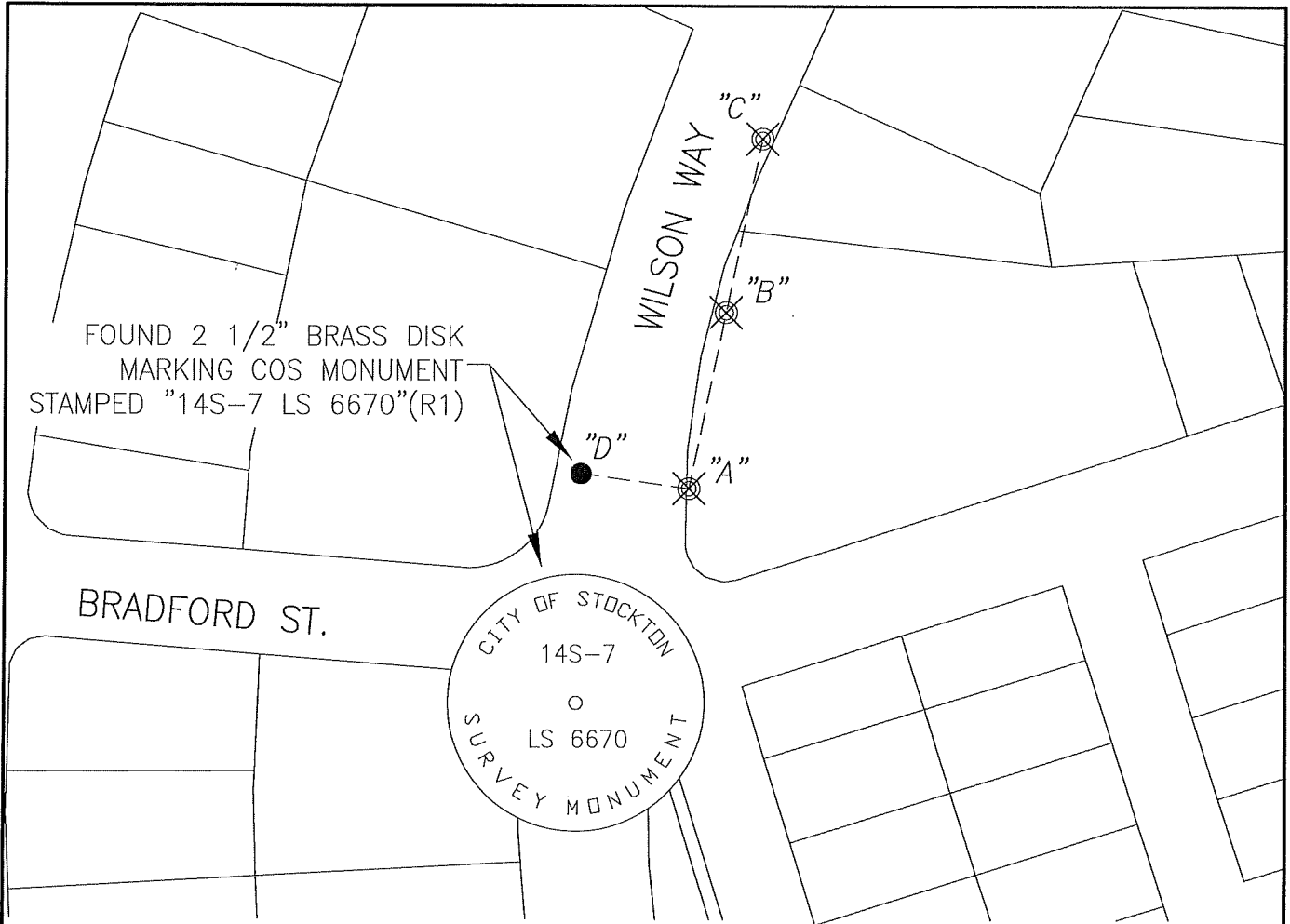
This Corner Record was received April 9, 2021 and examined and filed April 27, 2021

Signed James E. Hart P.L.S. or R.C.E. No: 8657

Title County Surveyor



County Surveyor's Comment _____



ELEVATION TABLE

POINT	ELEVATIONS
A	18.32
B	18.85
C	18.54
D	18.64

∠ AND DISTANCE TABLE

BS-@-FS	∠	FS DISTANCE
C-A-B	00°00'00"	120.58'(M)
C-A-C	00°00'00"	208.90'(M)
C-A-D	266°02'22"	63.92'(M)



NOT TO SCALE

LEGEND:

- ⊗ SET CONCRETE NAIL WITH BRASS TAG STAMPED "L.S. 6953" IN SIDEWALK
- FOUND MONUMENT AS NOTED.
- S.J.C.R. SAN JOAQUIN COUNTY RECORDS
- (M) MEASURED DISTANCE. ALL DISTANCES ARE MEASURED UNLESS NOTED OTHERWISE.
- S- RECORD OF SURVEY

REFERENCE:

(R1) 35-S-05, S.J.C.R.