

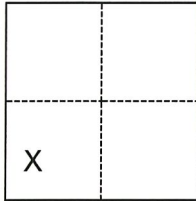
CORNER RECORD

Agency Index CR-21-035
Document Number _____

City of Lodi County of San Joaquin, California
Brief Legal Description Property monuments at Church Street & Walnut Street, Section 1, T3N, R6E

CORNER TYPE

COORDINATES (Optional)



- Government Corner
- Meander
- Rancho
- Control
- Property
- Other

N. _____ E. _____
 Elevation _____
 Units Metric U.S. Survey Foot
 Horizontal Datum _____
 Zone _____ Epoch Date _____
 Vertical Datum _____

Date of Survey January 7, 2021

Section 1, T.3N., R.6E. M.D.B. & M.

- Complies with Public Resources Code §§8801-8819
- Complies with Public Resources Code §§8890-8902

PLS Act Ref.: 8765(d) 8771 8773 Other:

Corner/Monument: Left as found Established Rebuilt Pre-Construction
 Found and tagged Reestablished Referenced Post-Construction

Narrative of corner identified and monument as found, set, reset, replaced, or removed:

See sheet #2 for description(s):

FOUND MAG NAILS, BUT NO MONUMENT OR MONUMENT BOX (CR 17-332). FOUND BOLT AND SHINER IN ALLEY SOUTH OF WALNUT STREET (NO RECORD) ON LOT LINE PROJECTION PER M.&P. 2-12. NO BOUNDARY ANALYSIS WAS PERFORMED.

SURVEYOR'S STATEMENT

This Corner Record was prepared by me or under my direction in conformance with the Professional Land Surveyors' Act on March 31, 2021.

Signed [Signature] P.L.S. or R.C.E. No. 9478



COUNTY SURVEYOR'S STATEMENT

This Corner Record was received April 13, 2021

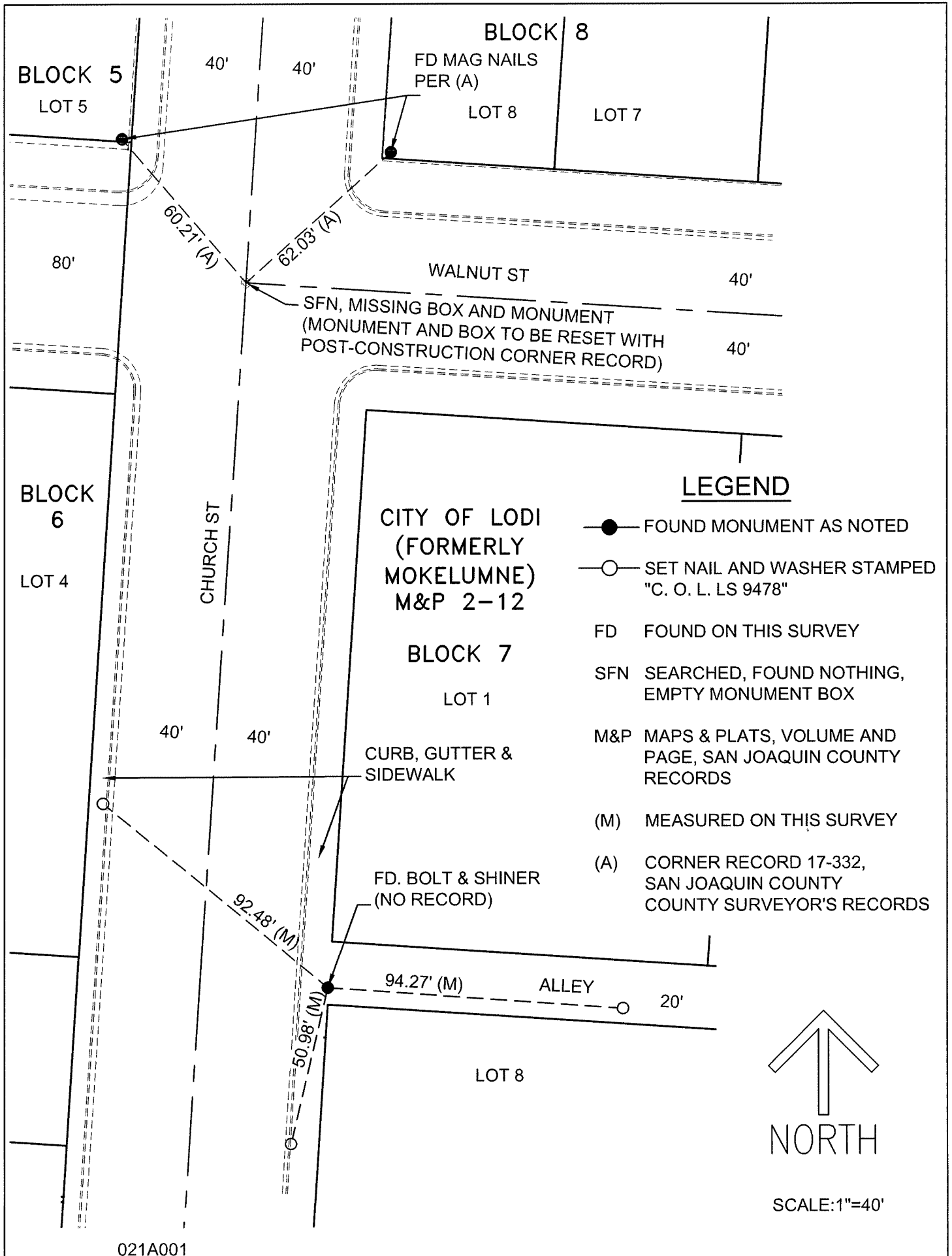
and examined and filed April 29, 2021.

Signed James E. Hart P.L.S. or R.C.E. No. 8657

Title County Surveyor

County Surveyor's Comment





BLOCK 5
LOT 5

BLOCK 8
FD MAG NAILS
PER (A)
LOT 8 LOT 7

BLOCK 6
LOT 4

CITY OF LODI
(FORMERLY
MOKELUMNE)
M&P 2-12

BLOCK 7
LOT 1

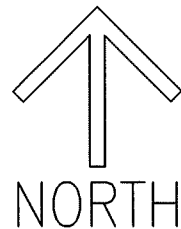
CURB, GUTTER &
SIDEWALK

FD. BOLT & SHINER
(NO RECORD)

LOT 8

LEGEND

- FOUND MONUMENT AS NOTED
- SET NAIL AND WASHER STAMPED "C. O. L. LS 9478"
- FD FOUND ON THIS SURVEY
- SFN SEARCHED, FOUND NOTHING, EMPTY MONUMENT BOX
- M&P MAPS & PLATS, VOLUME AND PAGE, SAN JOAQUIN COUNTY RECORDS
- (M) MEASURED ON THIS SURVEY
- (A) CORNER RECORD 17-332, SAN JOAQUIN COUNTY SURVEYOR'S RECORDS



SCALE: 1"=40'

021A001