

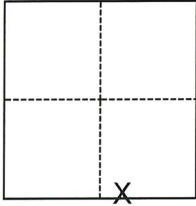
# CORNER RECORD

Agency Index CR-21-033  
 Document Number \_\_\_\_\_

City of Lodi County of San Joaquin, California  
 Brief Legal Description Property monuments at Lodi Avenue & Sunset Drive (M&P 11-34)

### CORNER TYPE

### COORDINATES (Optional)



- Government Corner
- Meander
- Rancho
- Control
- Property
- Other

N. \_\_\_\_\_ E. \_\_\_\_\_

Elevation \_\_\_\_\_

Units  Metric  U.S. Survey Foot

Horizontal Datum \_\_\_\_\_

Zone \_\_\_\_\_ Epoch Date \_\_\_\_\_

Vertical Datum \_\_\_\_\_

Complies with Public Resources Code §§8801-8819

Complies with Public Resources Code §§8890-8902

Date of Survey December 10, 2020

Section 2, T.3N., R.6E.  
 M.D.B.&M.

- PLS Act Ref.:  8765(d)  8771  8773  Other:
- Corner/Monument:  Left as found  Established  Rebuilt  Pre-Construction
- Found and tagged  Reestablished  Referenced  Post-Construction

Narrative of corner identified and monument as found, set, reset, replaced, or removed:

See sheet #2 for description(s):

**FOUND UNREFERENCED CHISELED CROSSES ON LOT LINE PROJECTION PER M.&P. 11-34. NO BOUNDARY ANALYSIS WAS PERFORMED.**

### SURVEYOR'S STATEMENT

This Corner Record was prepared by me or under my direction in conformance with the Professional Land Surveyors' Act on March 31, 2021.

Signed *[Signature]* P.L.S. or R.C.E. No. 9478



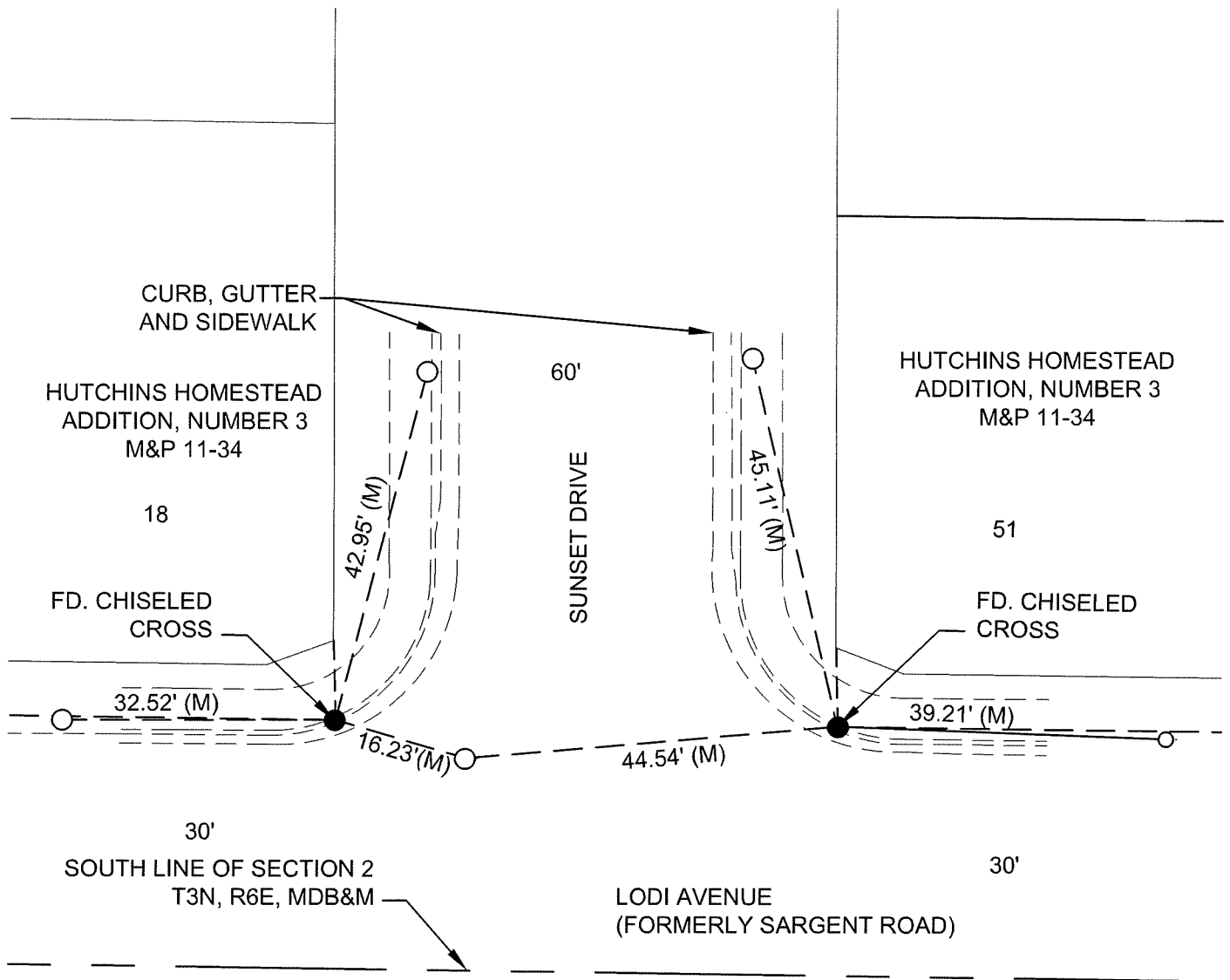
### COUNTY SURVEYOR'S STATEMENT

This Corner Record was received April 13, 2021 and examined and filed April 29, 2021.

Signed *James E. Hart* P.L.S. or R.C.E. No. 8657  
 Title County Surveyor

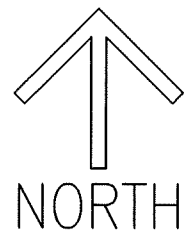


County Surveyor's Comment



**LEGEND**

- FOUND MONUMENT AS NOTED
- SET NAIL AND WASHER STAMPED "C.O.L. LS 9478"
- FD. FOUND ON THIS SURVEY
- M&P MAPS & PLATS, VOLUME AND PAGE, SAN JOAQUIN COUNTY RECORDS
- (M) MEASURED ON THIS SURVEY
- MDB&M MOUNT DIABLO BASE & MERIDIAN



SCALE: 1"=20'

021A002