

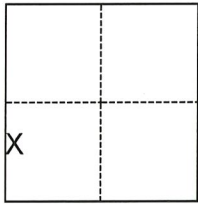
CORNER RECORD

Agency Index CR-21-032
Document Number _____

City of Lodi County of San Joaquin, California
Brief Legal Description Centerline monuments at Mills Avenue (M&P 18-8)

CORNER TYPE

COORDINATES (Optional)



- Government Corner
- Meander
- Rancho
- Control
- Property
- Other

N. _____ E. _____
 Elevation _____
 Units Metric U.S. Survey Foot
 Horizontal Datum _____
 Zone _____ Epoch Date _____
 Vertical Datum _____
 Complies with Public Resources Code §§8801-8819
 Complies with Public Resources Code §§8890-8902

Date of Survey December 10, 2020

Section 11, T.3N., R.6E.
M.D.B.&M.

- PLS Act Ref.: 8765(d) 8771 8773 Other:
- Corner/Monument: Left as found Established Rebuilt Pre-Construction
 Found and tagged Reestablished Referenced Post-Construction

Narrative of corner identified and monument as found, set, reset, replaced, or removed:

See sheet #2 for description(s):

Found 3/4" iron rod centerline monuments at Mills Avenue stamped "LS 2273" per (M&P 18-8).

SURVEYOR'S STATEMENT

This Corner Record was prepared by me or under my direction in conformance with
the Professional Land Surveyors' Act on March 31, 2021.

Signed *Jim A. Billigmeier* P.L.S. or R.C.E. No. 9478



COUNTY SURVEYOR'S STATEMENT

This Corner Record was received April 13, 2021

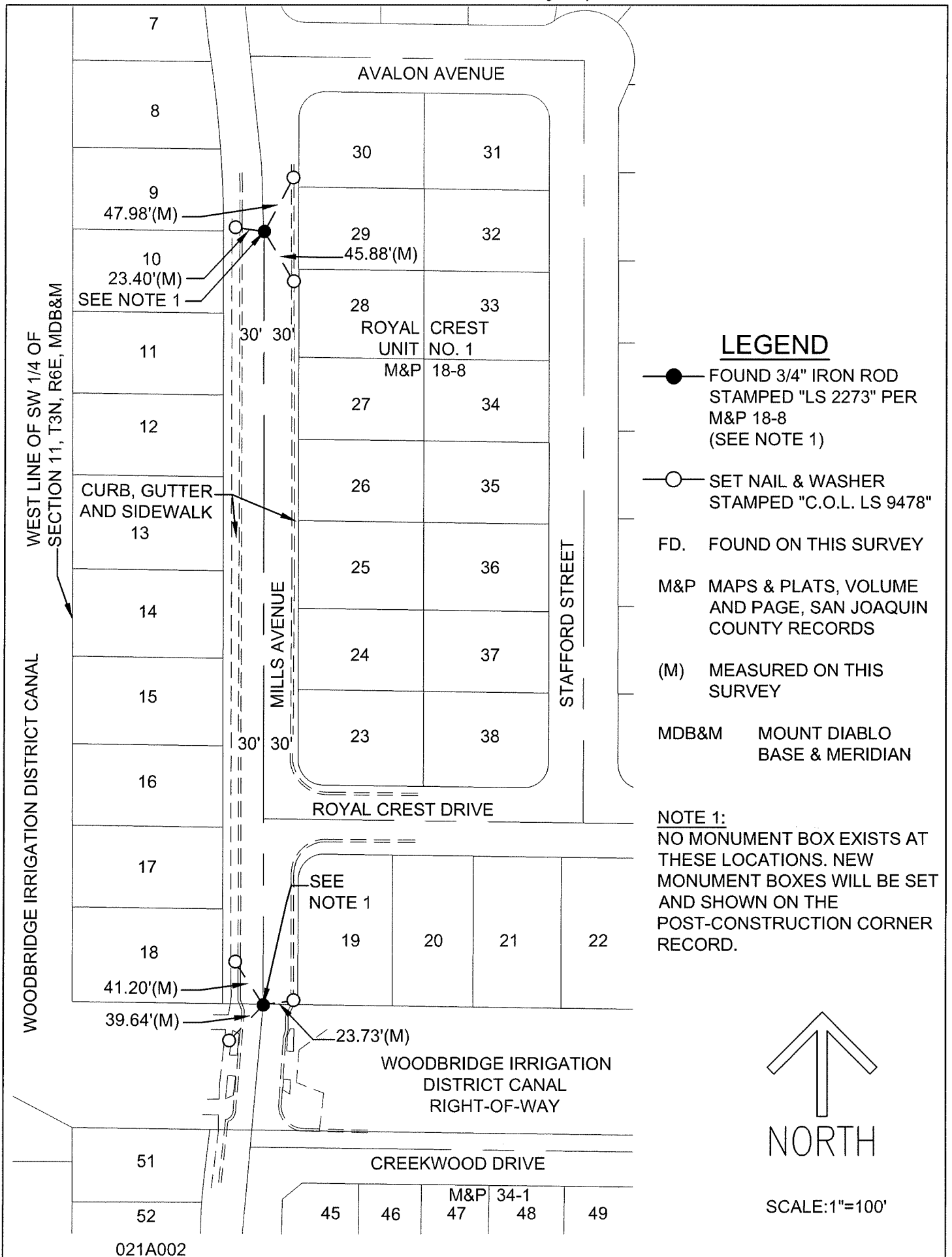
and examined and filed April 29, 2021.

Signed *James E. Hart* P.L.S. or R.C.E. No. 8657

Title County Surveyor

County Surveyor's Comment

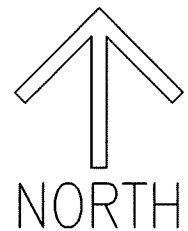




LEGEND

- FOUND 3/4" IRON ROD STAMPED "LS 2273" PER M&P 18-8 (SEE NOTE 1)
- SET NAIL & WASHER STAMPED "C.O.L. LS 9478"
- FD. FOUND ON THIS SURVEY
- M&P MAPS & PLATS, VOLUME AND PAGE, SAN JOAQUIN COUNTY RECORDS
- (M) MEASURED ON THIS SURVEY
- MDB&M MOUNT DIABLO BASE & MERIDIAN

NOTE 1:
 NO MONUMENT BOX EXISTS AT THESE LOCATIONS. NEW MONUMENT BOXES WILL BE SET AND SHOWN ON THE POST-CONSTRUCTION CORNER RECORD.



SCALE: 1"=100'

021A002