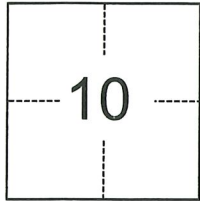


CORNER RECORD

Agency Index CR-21-028
 Document Number _____

City of Lodi County of San Joaquin, California
 Brief Legal Description M.P. 43-14

CORNER TYPE



- Government Corner
- Meander
- Rancho
- Control
- Property
- Other

Date of Survey January 7, 2021

T.3N., R.6E., M.D.B. & M.

COORDINATES (Optional)

N. _____ E. _____
 Elevation _____
 Units Metric U.S. Survey Foot
 Horizontal Datum _____
 Zone _____ Epoch Date _____
 Vertical Datum _____
 Complies with Public Resources Code §§8801-8819
 Complies with Public Resources Code §§8890-8902

PLS Act Ref.: 8765(d) 8771 8773 Other:

Corner/Monument: Left as found Established Rebuilt Pre-Construction
 Found and tagged Reestablished Referenced Post-Construction

Narrative of corner identified and monument as found, set, reset, replaced, or removed:
 See sheet #2 for description(s):

It is the purpose of this corner record to replace a monument referenced on the subdivision map that was found missing.

SURVEYOR'S STATEMENT

This Corner Record was prepared by me or under my direction in conformance with
 the Professional Land Surveyors' Act on January 8, 2021
 Signed [Signature] P.L.S. or R.C.E. No. 7889



COUNTY SURVEYOR'S STATEMENT

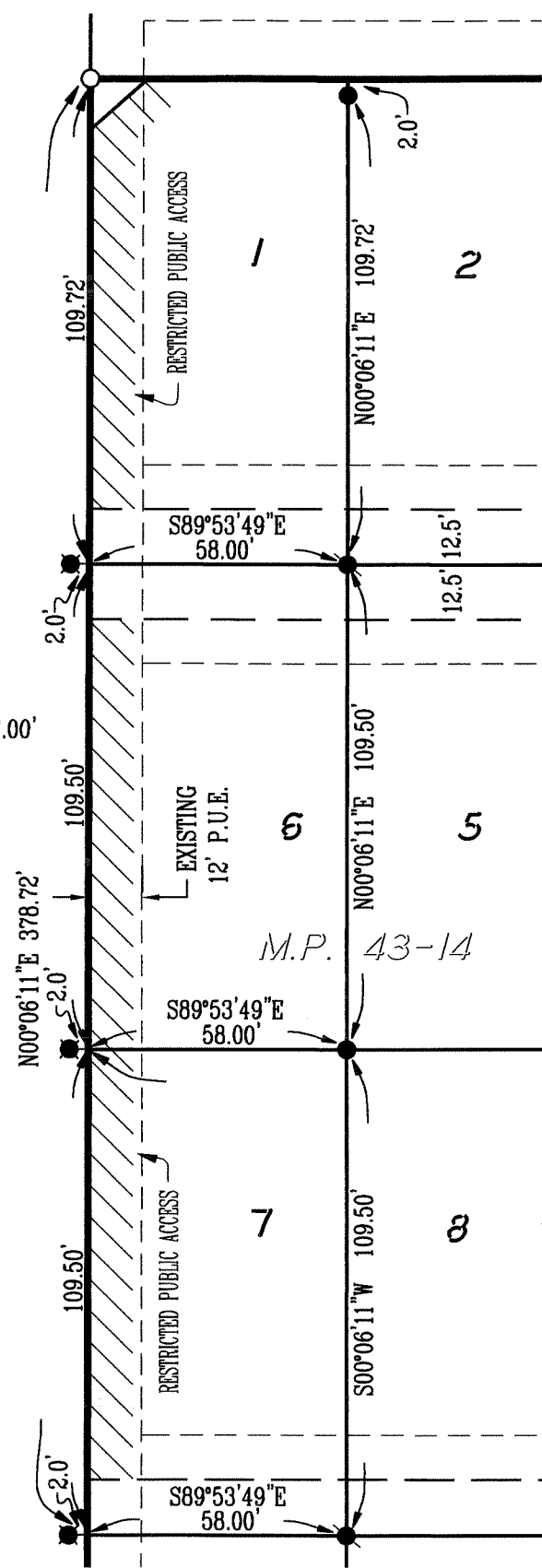
This Corner Record was received March 4, 2021
 and examined and filed March 16, 2021
 Signed [Signature] P.L.S. or R.C.E. No. 8657
 Title County Surveyor



County Surveyor's Comment

S:\Projects\2016\Drawings\16042_Corner Record.dwg 02/11/21 8:06am-JELSON-XREFS: 05039hc.dwg 05039_Topo.dwg 16042_HC_Map_1-4-17.dwg 06x11_bp_p.dwg

WESTGATE DRIVE



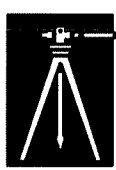
LEGEND:

- FD. "MAG" SPIKE WITH WASHER STAMPED "ELSON LS 7889" PER M.P. 43-14
- FD. 3/4" IRON ROD, CAPPED AND STAMPED "BAUMBACH & PIAZZA ELSON PLS 7889" PER M.P. 43-14
- FD. 1.25" DIAMETER BRASS DISK STAMPED "SURVEY LS 7889" PER M.P. 43-14
- SET 1.25" DIAMETER BRASS DISK STAMPED "SURVEY LS 7889"

M.P. MAPS AND PLATS, SAN JOAQUIN COUNTY RECORDS



Scale: 1"=40'



PREPARED IN THE OFFICE OF:

BAUMBACH & PIAZZA, INC.

CIVIL ENGINEERS • SURVEYORS

www.bpengineers.net
209.368.6618

323 W. Elm St.
Lodi, CA 95240