

CORNER RECORD

Agency Index CR-21-027

Document Number _____

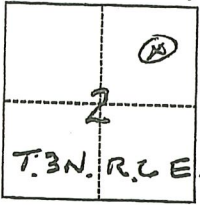
City of Lodi County of SAN JOAQUIN, California

Brief Legal Description REFERED TO R.S. 39-194 "RECORD OF SURVEY 39-194 S.J.C.R."

SOB R.S. 5-157

CORNER TYPE

COORDINATES (Optional)



- Government Corner
- Meander
- Rancho
- Control
- Property
- Other

Date of Survey 1-11-2021

N. _____ E. _____

Elevation _____

Units Metric U.S. Survey Foot

Horizontal Datum _____

Zone _____ Epoch Date _____

Vertical Datum _____

Complies with Public Resources Code §§8801-8819

Complies with Public Resources Code §§8890-8902

PLS Act Ref.: 8765(d) 8771 8773 Other:

Corner/Monument: Left as found Established Rebuilt Pre-Construction
 Found and tagged Reestablished Referenced Post-Construction

Narrative of corner identified and monument as found, set, reset, replaced, or removed:
 See sheet #2 for description(s):

SURVEYOR'S STATEMENT

This Corner Record was prepared by me or under my direction in conformance with the Professional Land Surveyors' Act on 1-11-2021 & 2-12-2021.
 Signed Ronald P. Waldum P.L.S. or R.C.E. No. 16835

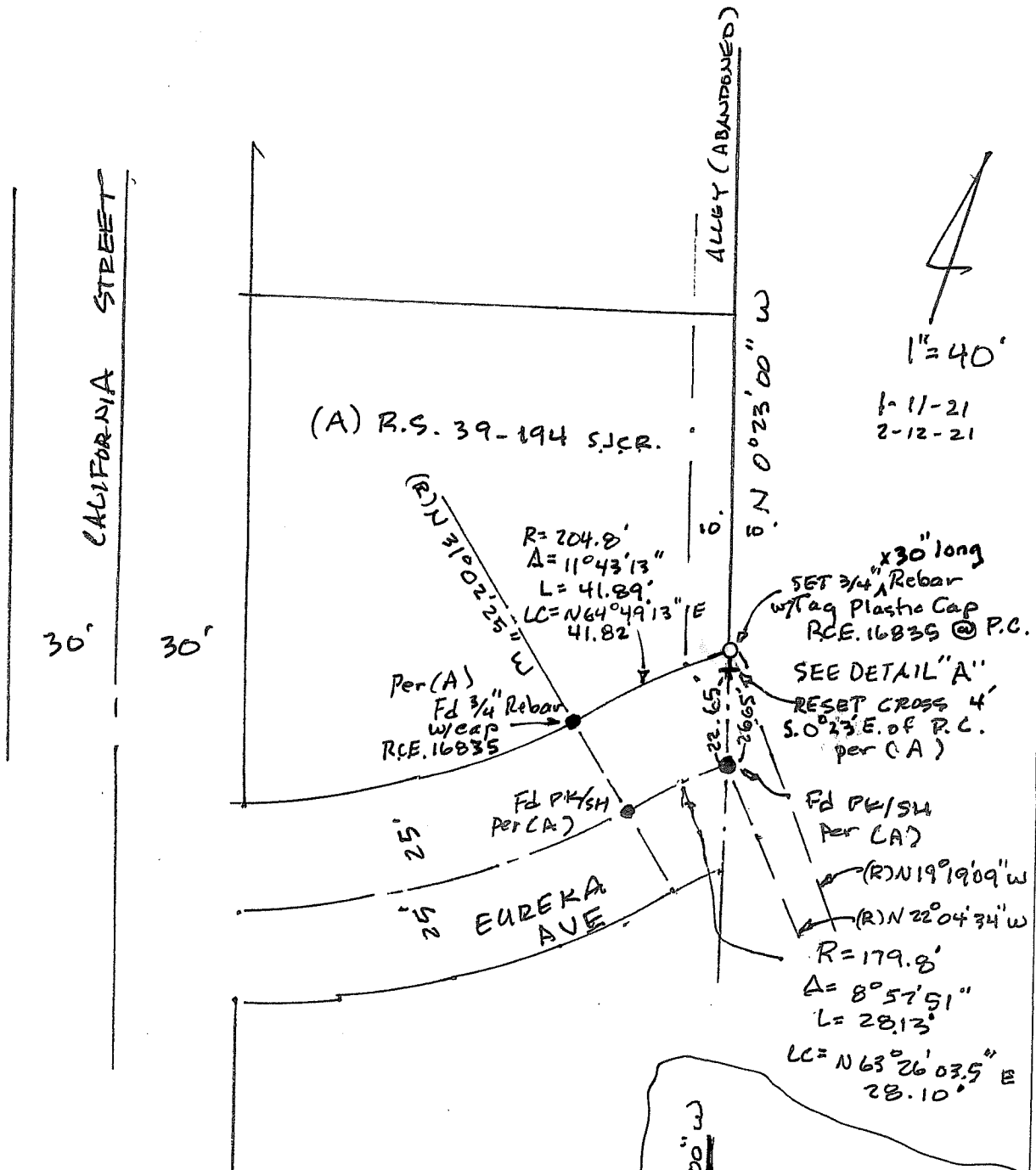


COUNTY SURVEYOR'S STATEMENT

This Corner Record was received March 8, 2021 and examined and filed March 11, 2021.
 Signed James E. Hart P.L.S. or R.C.E. No. 8657
 Title County Surveyor



County Surveyor's Comment



1-11-21
2-12-21

LEGEND: (A) RECORD OF SURVEY 39-194
 S.J.C.R. SAN JOAQUIN COUNTY RECORDS S.J.C.R.
 R RADIUS
 (R) RADIAL BEARING
 L LENGTH
 LC LONG CHORD
 P.C. PROPERTY CORNER
 R.P. REFERENCE POINT
 R.S. RECORD OF SURVEY S.J.C.R.
 834-00 FB 36-133

