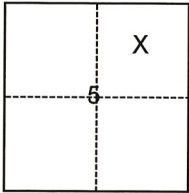


CORNER RECORD

Agency Index CR-21-023
 Document Number _____

City of _____ County of San Joaquin, California
 Brief Legal Description Lot 11, "Prize Medal Farm Tract", M.&P. 5-39, S.J.C.R.

CORNER TYPE



- Government Corner Control
 Meander Property
 Rancho Other

Date of Survey January 21, 2021

COORDINATES (Optional)

N. _____ E. _____

Elevation _____

Units Metric U.S. Survey Foot

Horizontal Datum _____

Zone _____ Epoch Date _____

Vertical Datum _____

Complies with Public Resources Code §§8801-8819

Complies with Public Resources Code §§8890-8902

T.5N., R.5E., M.D.B.&M.

- PLS Act Ref.: 8765(d) 8771 8773 Other:
- Corner/
Monument: Left as found Established Rebuilt Pre-Construction
 Found and tagged Reestablished Referenced Post-Construction

Narrative of corner identified and monument as found, set, reset, replaced, or removed:

See sheet #2 for description(s):

SURVEYOR'S STATEMENT

This Corner Record was prepared by me or under my direction in conformance with
 the Professional Land Surveyors' Act on February 19, 2021.

Signed Joe Murphy (P.L.S.) or R.C.E. No. 7269



COUNTY SURVEYOR'S STATEMENT

This Corner Record was received February 19, 2021
 and examined and filed March 4, 2021.

Signed James E. Hart P.L.S. or R.C.E. No. 8657
 Title County Surveyor

County Surveyor's Comment



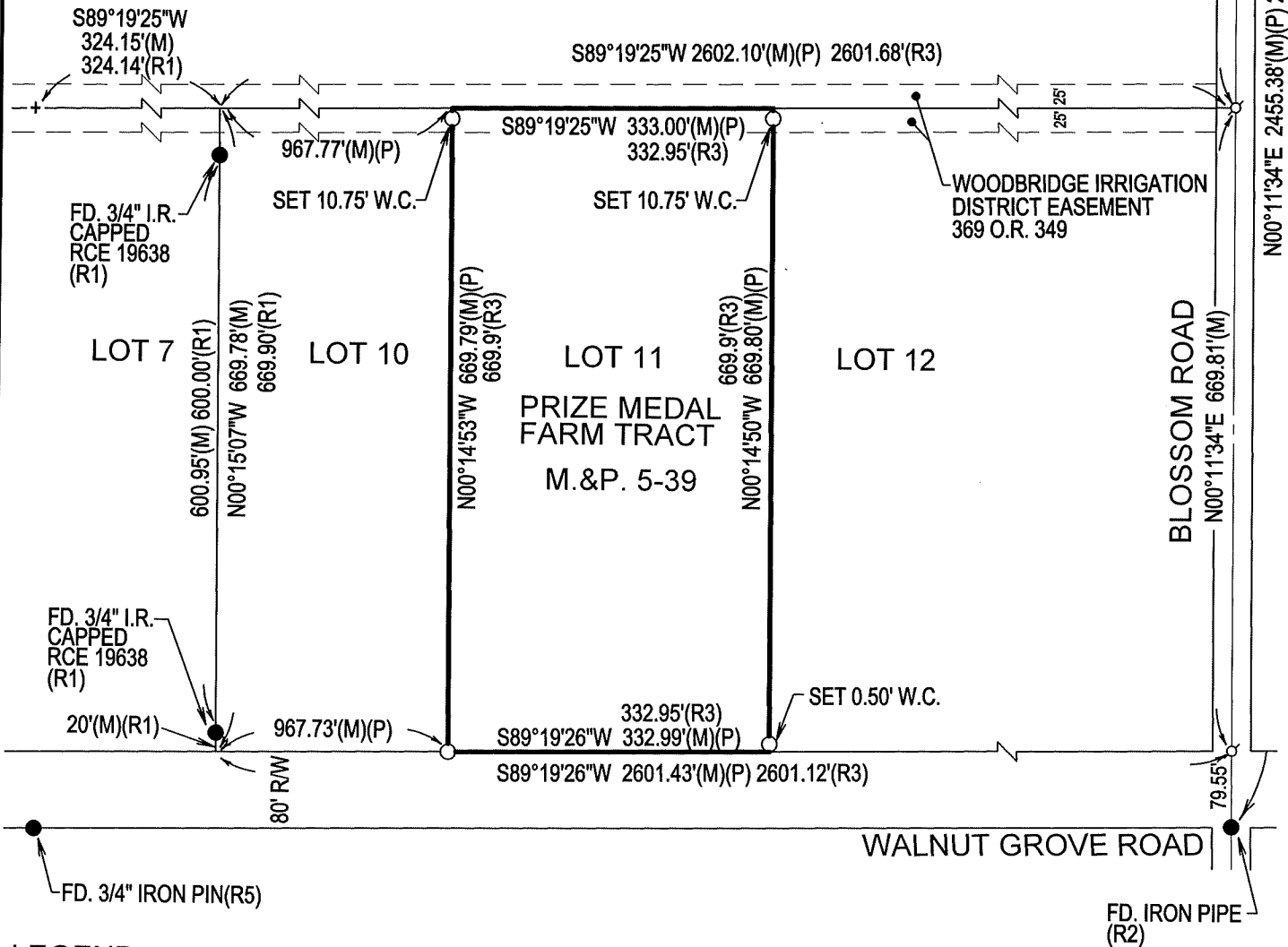
FD. BOLT & WASHER (R2)(R4)



SCALE: NOT TO SCALE

REFERENCES

- (R1) R.S. 35-97, S.J.C.R.
- (R2) R.S. 20-110, S.J.C.R.
- (R3) M.&P. 5-39, S.J.C.R.
- (R4) C.R. 16-369, S.J.C.S.R.
- (R5) R.S. 31-140, S.J.C.R.



LEGEND

- FD. FOUND
- I.R. IRON ROD
- R/W RIGHT-OF-WAY
- M.&P. MAPS & PLATS
- SFN SEARCHED FOUND NOTHING
- (M) MEASURED
- O.R. OFFICIAL RECORDS
- W.C. WITNESS CORNER
- P PRORATED
- S.J.C.R. SAN JOAQUIN COUNTY RECORDS
- S.J.C.S.R. SAN JOAQUIN COUNTY SURVEYOR'S RECORDS

- SET 3/4" X 30" IRON ROD CAPPED "L.S. 7269"
- FOUND MONUMENT AS NOTED
- + FOUND CHISELED "+"
- ∅ DIMENSION POINT