

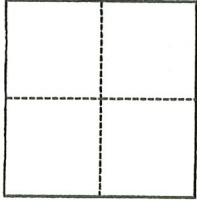
CORNER RECORD

Agency Index CR-21-022

Document Number _____

City of LODI County of SAN JOAQUIN, California

Brief Legal Description _____ R.S. 39-142, S.J.C.R.

CORNER TYPE**COORDINATES (Optional)**

- Government Corner Control
 Meander Property
 Rancho Other

N. _____ E. _____

Elevation _____

Units Metric U.S. Survey Foot

Horizontal Datum _____

Zone _____ Epoch Date _____

Vertical Datum _____

 Complies with Public Resources Code §§8801-8819 Complies with Public Resources Code §§8890-8902PLS Act Ref.: 8765(d) 8771 8773 Other:Corner/Monument: Left as found Established Rebuilt Pre-Construction Found and tagged Reestablished Referenced Post-Construction

Narrative of corner identified and monument as found, set, reset, replaced, or removed:

 See sheet #2 for description(s):**SEE BACKSIDE FOR MONUMENTS FOUND AND SET****SURVEYOR'S STATEMENT**This Corner Record was prepared by me or under my direction in conformance with the Professional Land Surveyors' Act on 01/22/2021.Signed Walter John Shoup P.L.S. or R.C.E. No. 7736**COUNTY SURVEYOR'S STATEMENT**This Corner Record was received January 22, 2021and examined and filed February 4, 2021.Signed James E. Hart P.L.S. or R.C.E. No. 8657Title County Surveyor

County Surveyor's Comment _____



MONUMENTS FOUND

- FD. 3/4" REBAR WITH CAP STAMPED "PLS 7736" PER (R6),
- ⊗ FD. AXLE PER (R4), NO TAG
- ⊖ FD. 3/4" IRON PIPE TAGGED "LS 2273" PER (R2)
- + FD. CHISELED CROSS PER (R6)
- ⊙ SET 1" BRONZE DISK STAMPED "PLS 7736"
- SET 3/4"x30" REBAR WITH CAP STAMPED "PLS 7736"

BASIS OF BEARINGS:

THE CENTERLINE OF U.P.R.R. BEARS N03°46'28"E PER (R6).

P.M. 8-22

DE FORCE AVE.

P.M. 14-122

P.M. 24-118

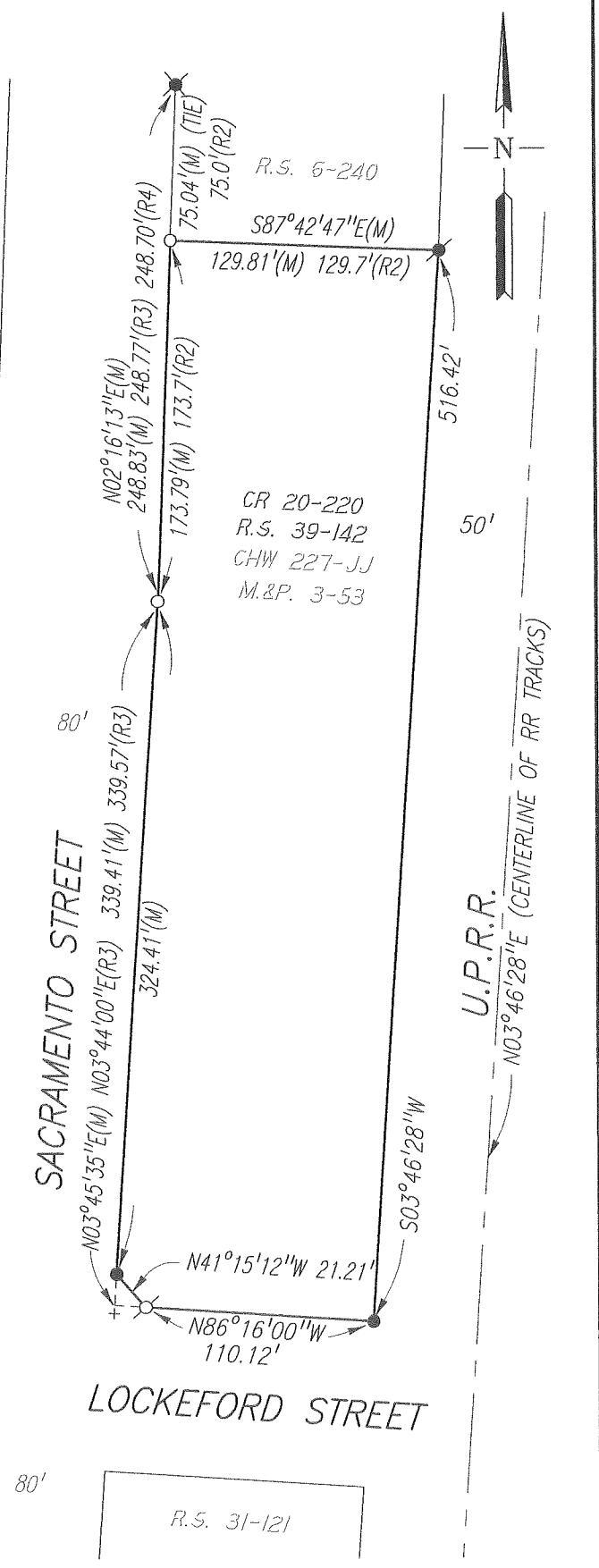
LEGEND:

- FD. FOUND
- D.N. RECORDER'S DOCUMENT NUMBER, S.J.C.R.
- I.N. RECORDER'S INSTRUMENT NUMBER, S.J.C.R.
- (C) CALCULATED DATA
- (M) MEASURED DATA
- CR CORNER RECORD, S.J.C.S.R.
- R.S. RECORD OF SURVEY, BOOK-PAGE, S.J.C.R.
- P.M. PARCEL MAP, BOOK-PAGE, S.J.C.R.
- M.&P. MAPS AND PLATS, VOL.-PAGE, S.J.C.R.
- S.J.C.R. SAN JOAQUIN COUNTY RECORDS
- S.J.C.S.R. SAN JOAQUIN COUNTY SURVEYOR'S RECORDS

ALLEY

REFERENCES:

- (R1) R.S. 31-121, S.J.C.R.
- (R2) R.S. 6-240, S.J.C.R.
- (R3) P.M. 24-118, S.J.C.R.
- (R4) CHW 227-JJ, S.J.C.S.R.
- (R5) P.M. 22-91, S.J.C.R.
- (R6) R.S. 39-142, S.J.C.R.



Scale: 1"=80'	CORNER RECORD LODI BOWLING ALLEY - R.S. 39-142, S.J.C.R.	Date: 01/22/2021
Job No.: 17-171		DWG: 17171CR-POSTCONST