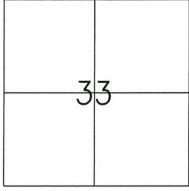


# CORNER RECORD

Agency Index CR-21-021  
Document Number \_\_\_\_\_

City of Manteca  
County of San Joaquin, California  
Brief Legal Description RAYMUS MANOR UNIT II ( Book 22 Maps and Plats Page 76)



T 1 S., R. 7 E., M.D.M

### CORNER TYPE

- Government Corner  Control
- Meander  Property
- Rancho  Other

Date of Survey 11/19/2020

### COORDINATES (Optional )

N. \_\_\_\_\_ E. \_\_\_\_\_  
 Elevation \_\_\_\_\_  
 Units Metric  U.S. Survey Foot   
 Horizontal Datum \_\_\_\_\_  
 Zone \_\_\_\_\_ Epoch Date \_\_\_\_\_  
 Vertical Datum \_\_\_\_\_

- Complies with Public Resources Code §§8801-8819
- Complies with Public Resources Code §§8890-8902

PLS Act Ref:  8765(d)  8771  8773  Other: \_\_\_\_\_

Corner/  
 Monument:  Left as found  Established  Rebuilt  Pre-Construction  
 Found and tagged  Reestablished  Referenced  Post-Construction

Narrative of corner(s) identified and monument as found, set, reset, replaced, or removed:  
 See sheet #2 for description(s):

RESET CHISELED CROSS AT 4' PROLONGATION OF THE SIDELINE BETWEEN LOTS 7 & 8 PER 22 MAPS and PLATS PAGE 76.

### SURVEYOR'S STATEMENT

This Corner Record was prepared by me or under my direction in conformance with the Professional Land Surveyors' Act on December 23, 2020.

Signed [Signature] P.L.S. No. 8474



### COUNTY SURVEYOR'S STATEMENT

This Corner Record was received January 22, 2021  
and examined and filed February 4, 2021.

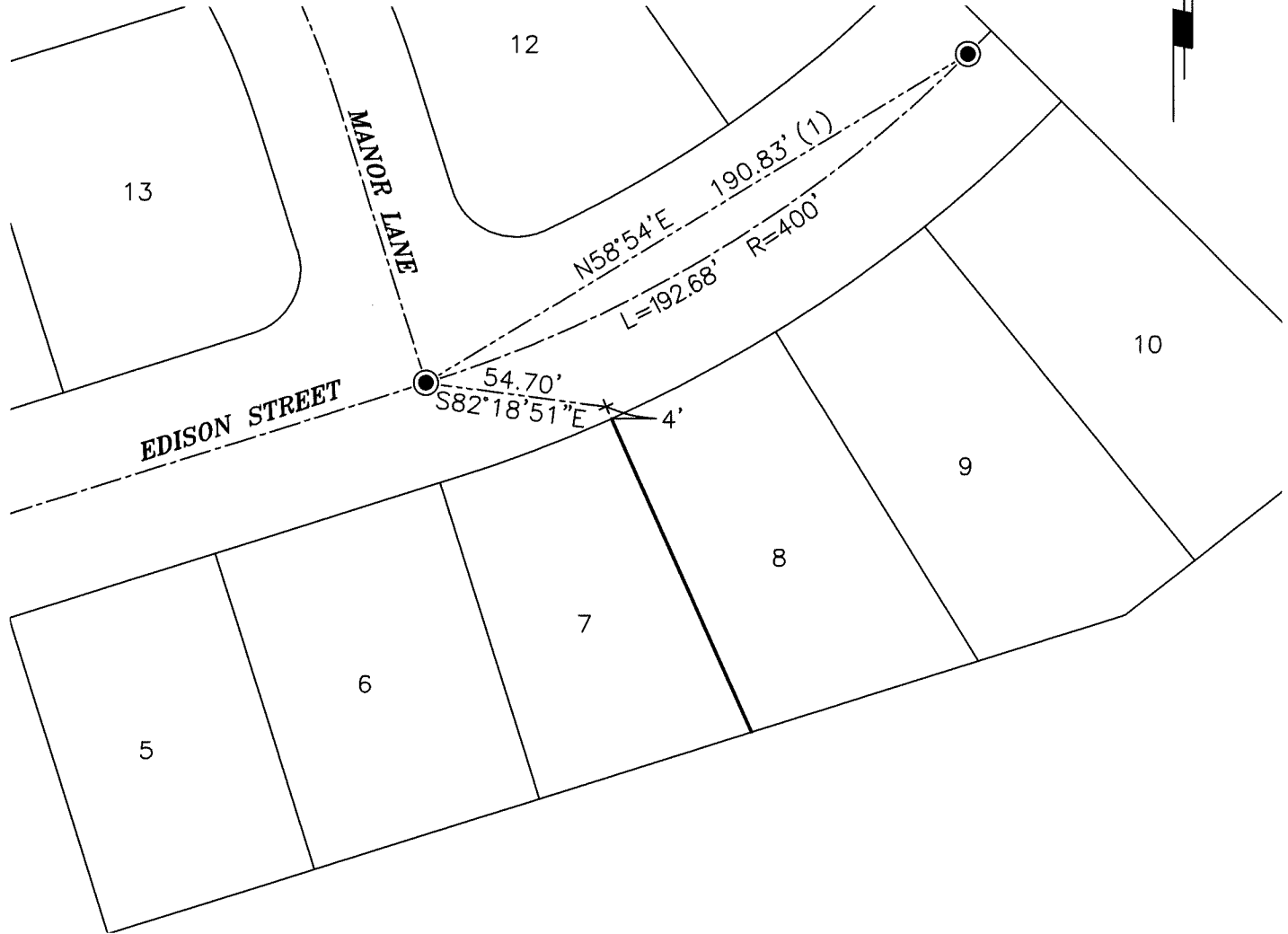
Signed James E. Hart P.L.S. or R.C.E. No. 8657  
Title County Surveyor

County Surveyor's Comment \_\_\_\_\_



STATEMENT OF PURPOSE:

THE PURPOSE OF THIS SURVEY IS TO PERPETUATE THE RECORD LOCATION OF A FRONT LOT CORNER DUE TO THE REMOVAL FROM PG&E IMPROVEMENTS.



REFERENCE & BASIS OF BEARINGS:

(1) BOOK 22 MAPS and PLATS PAGE 76, S.J.C.R.

LEGEND:

- FOUND 3/4" PIN IN MONUMENT BOX PER (1)
- + SET CHISELED CROSS ON SIDEWALK AT 4' PROLONGATION OF SIDELINE PER (1)

S.J.C.R. SAN JOAQUIN COUNTY RECORDS