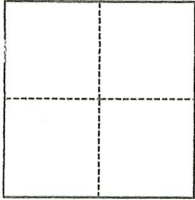


# CORNER RECORD

Agency Index CR-21-020

Document Number \_\_\_\_\_

City of STOCKTON County of SAN JOAQUIN, CaliforniaBrief Legal Description "R.S. 40-13" PORTION BLOCK 43, PORTION SEC. 22, C.M. WEBER GRANT**CORNER TYPE****COORDINATES (Optional)**

- Government Corner     Control  
 Meander                     Property  
 Rancho                         Other

Date of Survey 12/28/2020

N. \_\_\_\_\_ E. \_\_\_\_\_

Elevation \_\_\_\_\_

Units  Metric  U.S. Survey Foot

Horizontal Datum \_\_\_\_\_

Zone \_\_\_\_\_ Epoch Date \_\_\_\_\_

Vertical Datum \_\_\_\_\_

 Complies with Public Resources Code §§8801-8819 Complies with Public Resources Code §§8890-8902PLS Act Ref.:  8765(d)  8771  8773  Other:Corner/Monument:  Left as found  Established  Rebuilt  Pre-Construction Found and tagged  Reestablished  Referenced  Post-Construction

Narrative of corner identified and monument as found, set, reset, replaced, or removed:

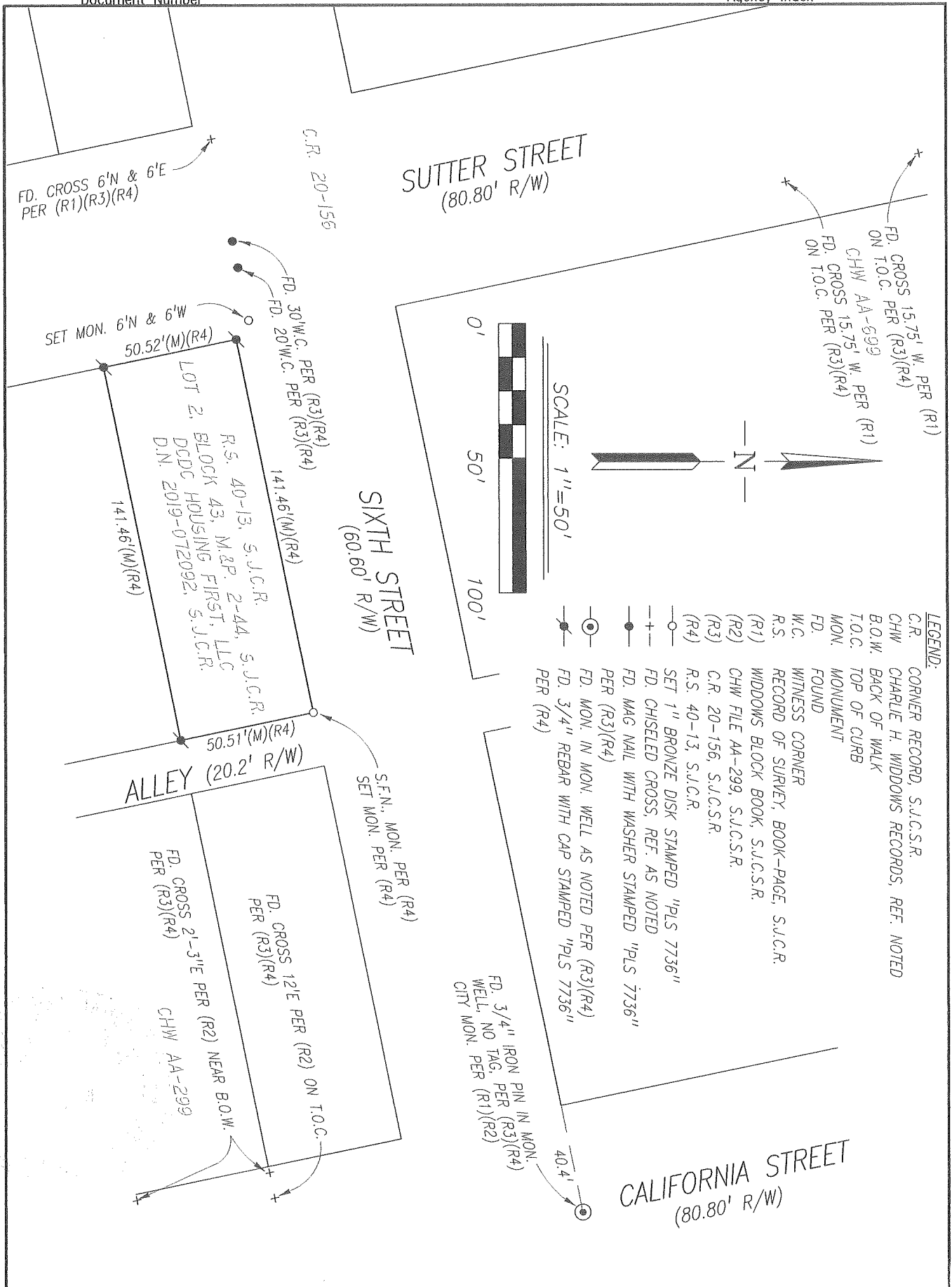
 See sheet #2 for description(s):**SEE BACKSIDE FOR MONUMENTS FOUND AND SET****SURVEYOR'S STATEMENT**

This Corner Record was prepared by me or under my direction in conformance with

the Professional Land Surveyors' Act on 01/20/2021Signed Walter John Shoup P.L.S. or R.C.E. No. 7736**COUNTY SURVEYOR'S STATEMENT**This Corner Record was received January 20, 2021and examined and filed February 4, 2021Signed James E. Hart P.L.S. or R.C.E. No. 8657Title County Surveyor

County Surveyor's Comment \_\_\_\_\_





Scale: 1"=50'  
 Job No.: 20-095

**CORNER RECORD**  
**EXHIBIT MAP**

Date: 01/20/2021  
 DWC: 20095CR-POSTCONST