

# CORNER RECORD

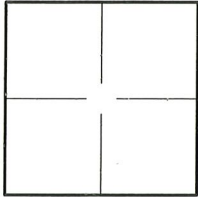
Agency Index CR-21-012  
Document Number \_\_\_\_\_

City of STOCKTON County of SAN JOAQUIN, California

Brief Legal Description LOT 451 22 M&P 100, S.J.C.R

### CORNER TYPE

### COORDINATES (Optional)



Government Corner  Control   
Meander  Property   
Rancho  Other   
Date of Survey SEPTEMBER 10, 2020

N. \_\_\_\_\_ E. \_\_\_\_\_  
Elevation \_\_\_\_\_  
Units  Metric  U.S. Survey Foot   
Horizontal Datum \_\_\_\_\_  
Zone \_\_\_\_\_ Epoch Date \_\_\_\_\_  
Vertical Datum \_\_\_\_\_

Complies with Public Resources Code §§8801-8819  
 Complies with Public Resources Code §§88900-8902

PLS Act Ref.:  **8765(d)**  **8771**  **8773**  **Other:**  
Corner/Monument:  Left as found  Established  Rebuilt  Pre-Construction  
 Found and tagged  Reestablished  Referenced  Post-Construction

Narrative of corner identified and monument as found, set, reset, replaced, or removed:  
 See sheet #2 for description(s):

FOUND 3/4" IRON PIN (X1)  
FOUND 3/4" IRON PIN IN MONUMENT WELL (X2)  
SET 3/4" X 30" IRON PIPE, TAGGED LS 7539 (X3)  
SET TACK AND TAG, TAGGED LS 7539 (X1)

### SURVEYOR'S STATEMENT

This Corner Record was prepared by me or under my direction in conformance with  
the Professional Land Surveyor's Act on December 22, 2020

Signed [Signature] P.L.S. or R.C.E. No. LS 7539



### COUNTY SURVEYOR'S STATEMENT

This Corner Record was received December 30, 2020  
and examined and filed January 14, 2021

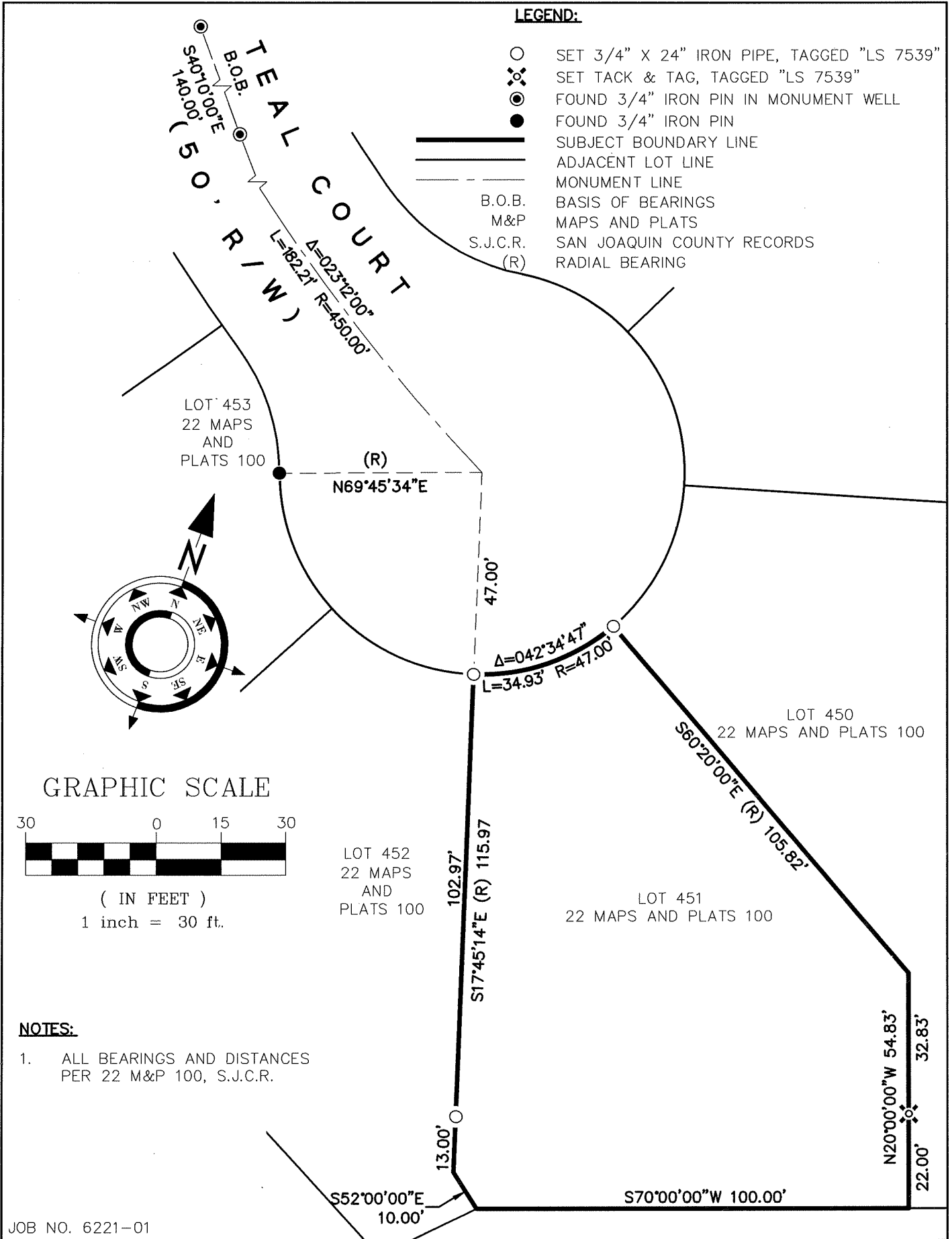
Signed James E. Hart P.L.S. or R.C.E. No. 8657  
Title County Surveyor



County Surveyor's Comment:

**LEGEND:**

- SET 3/4" X 24" IRON PIPE, TAGGED "LS 7539"
- ⊗ SET TACK & TAG, TAGGED "LS 7539"
- FOUND 3/4" IRON PIN IN MONUMENT WELL
- FOUND 3/4" IRON PIN
- ▬ SUBJECT BOUNDARY LINE
- ▬▬▬ ADJACENT LOT LINE
- ▬▬▬ MONUMENT LINE
- B.O.B. BASIS OF BEARINGS
- M&P MAPS AND PLATS
- S.J.C.R. SAN JOAQUIN COUNTY RECORDS
- (R) RADIAL BEARING



**NOTES:**

1. ALL BEARINGS AND DISTANCES PER 22 M&P 100, S.J.C.R.