

CORNER RECORD

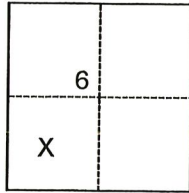
Agency Index CR-21-002

Document Number _____

City of _____ County of San Joaquin, California

Brief Legal Description Surveyed "Designated Remainder" Per P.M. 22-157, S.J.C.R.

CORNER TYPE



- Government Corner
- Meander
- Rancho
- Control
- Property
- Other

Date of Survey May 26, 2020

COORDINATES (Optional)

N. _____ E. _____

Elevation _____

Units Metric U.S. Survey Foot

Horizontal Datum _____

Zone _____ Epoch Date _____

Vertical Datum _____

Complies with Public Resources Code §§8801-8819

Complies with Public Resources Code §§8890-8902

T.4N., R.8E., M.D.B.&M.

PLS Act Ref.: 8765(d) 8771 8773 Other:

Corner/Monument: Left as found Established Rebuilt Pre-Construction

Found and tagged Reestablished Referenced Post-Construction

Narrative of corner identified and monument as found, set, reset, replaced, or removed:

See sheet #2 for description(s):

SURVEYOR'S STATEMENT

This Corner Record was prepared by me or under my direction in conformance with the Professional Land Surveyors' Act on December 18, 2020

Signed [Signature] (P.L.S.) or R.C.E. No. 7269



COUNTY SURVEYOR'S STATEMENT

This Corner Record was received December 23, 2020

and examined and filed January 7, 2021

Signed [Signature] P.L.S. or R.C.E. No. 8657

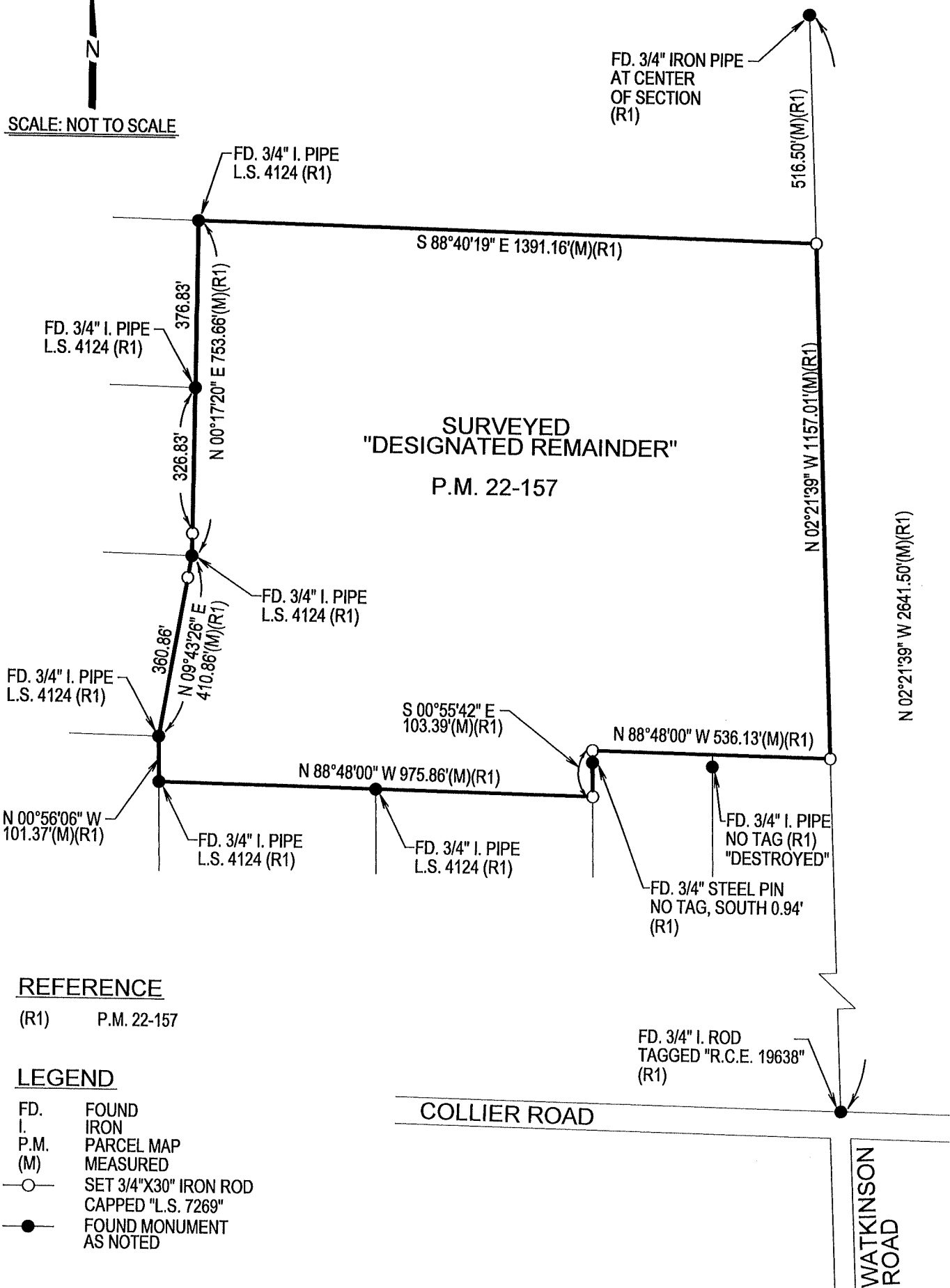
Title County Surveyor

County Surveyor's Comment





SCALE: NOT TO SCALE



SURVEYED
 "DESIGNATED REMAINDER"
 P.M. 22-157

REFERENCE

(R1) P.M. 22-157

LEGEND

- FD. FOUND
- I. IRON
- P.M. PARCEL MAP
- (M) MEASURED
- SET 3/4"X30" IRON ROD
CAPPED "L.S. 7269"
- FOUND MONUMENT
AS NOTED

COLLIER ROAD

WATKINSON ROAD