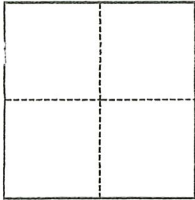


# CORNER RECORD

Agency Index CR-20-235

Document Number \_\_\_\_\_

City of LODI County of SAN JOAQUIN, CaliforniaBrief Legal Description LOT 9, M.&P. 11-32, S.J.C.R.**CORNER TYPE****COORDINATES (Optional)**

- Government Corner     Control  
 Meander                     Property  
 Rancho                         Other

N. \_\_\_\_\_ E. \_\_\_\_\_

Elevation \_\_\_\_\_

Units     Metric                     U.S. Survey Foot

Horizontal Datum \_\_\_\_\_

Zone \_\_\_\_\_ Epoch Date \_\_\_\_\_

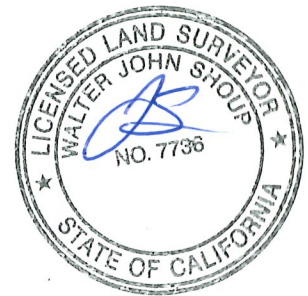
Vertical Datum \_\_\_\_\_

 Complies with Public Resources Code §§8801-8819 Complies with Public Resources Code §§8890-8902PLS Act Ref.:     8765(d)                     8771                     8773                     Other:Corner/Monument:     Left as found                     Established                     Rebuilt                     Pre-Construction                                   Found and tagged                     Reestablished                     Referenced                     Post-Construction

Narrative of corner identified and monument as found, set, reset, replaced, or removed:

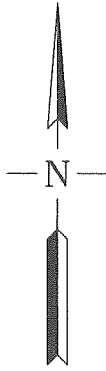
 See sheet #2 for description(s):**SEE PAGE 2 OF 2 SHOWING MONUMENTS FOUND AND SET.****SURVEYOR'S STATEMENT**

This Corner Record was prepared by me or under my direction in conformance with

the Professional Land Surveyors' Act on December 10, 2020Signed Walter John Shoup P.L.S. or R.C.E. No. 7736**COUNTY SURVEYOR'S STATEMENT**This Corner Record was received December 10, 2020and examined and filed December 29, 2020Signed James E. Hart P.L.S. or R.C.E. No. 8657Title County Surveyor

County Surveyor's Comment \_\_\_\_\_





SCALE: 1"=40'



0' 40' 80'

LEGEND:

- P.U.E. PUBLIC UTILITY EASEMENT
- MON. MONUMENT
- M.&P. MAPS & PLATS VOL.-PAGE, S.J.C.R.
- R.S. RECORD OF SURVEY BOOK-PAGE, S.J.C.R.
- S.J.C.R. SAN JOAQUIN COUNTY RECORDS

REFERENCES:

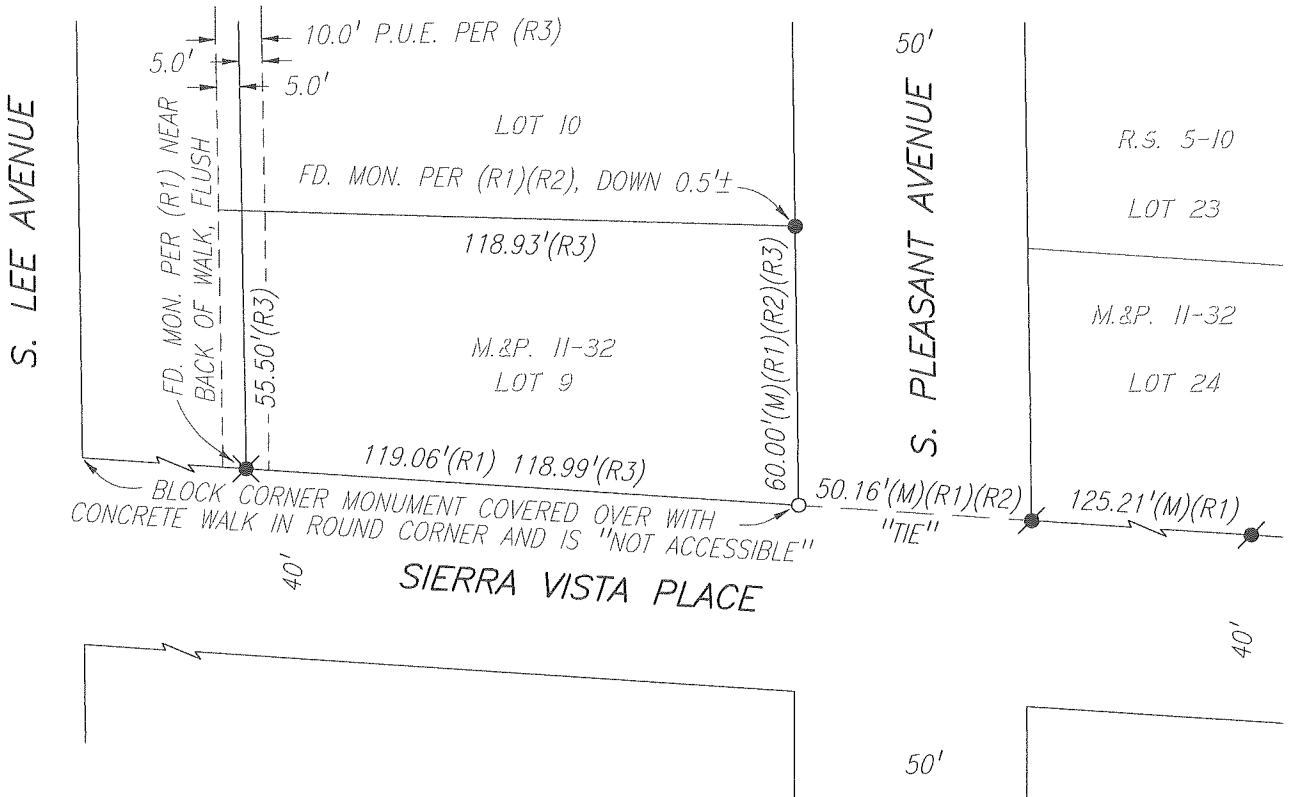
- (R1) R.S. 36-152, S.J.C.R.
- (R2) R.S. 5-10, S.J.C.R.
- (R3) M.&P. 11-32, S.J.C.R.

NOTES:

- 1) ALL RECORDS NOTED ARE SAN JOAQUIN COUNTY AND BOOK OR VOLUME PRECEDES PAGE.

MONUMENTS FOUND AND SET:

- SET 1" DIAMETER BRONZE DISK WITH 3" LONG STEM, STAMPED "PLS 7736", MONUMENT DRILLED AND EPOXIED IN CONCRETE
- FD. NAIL & TAG STAMPED "LS 8080" PER (R1) IN CONCRETE
- FD. 1" IRON PIPE PER (R1)(R2), NO TAG
- ⊗ FD. 1" IRON PIPE PER (R1), NO TAG



Scale: 1"=40'  
Job No.: 20-127

**CORNER RECORD**  
LOT 9, M.&P. 11-32, S.J.C.R.

Date: 12/10/2020  
DWG: 20127CR.DWG