

# CORNER RECORD

Agency Index CR-20-226

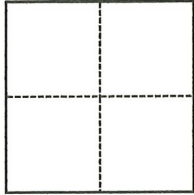
Document Number \_\_\_\_\_

City of Lodi County of San Joaquin, California

Brief Legal Description NW Cor Parcel 2, 25 P.M. 7, S.J.C.R.

### CORNER TYPE

### COORDINATES (Optional)



- Government Corner
- Meander
- Rancho
- Control
- Property
- Other

Date of Survey October 6, 2020

N. \_\_\_\_\_ E. \_\_\_\_\_

Elevation \_\_\_\_\_

Units  Metric  U.S. Survey Foot

Horizontal Datum \_\_\_\_\_

Zone \_\_\_\_\_ Epoch Date \_\_\_\_\_

Vertical Datum \_\_\_\_\_

Complies with Public Resources Code §§8801-8819

Complies with Public Resources Code §§8890-8902

PLS Act Ref.:  8765(d)  8771  8773  Other:

Corner/Monument:  Left as found  Established  Rebuilt  Pre-Construction

Found and tagged  Reestablished  Referenced  Post-Construction

Narrative of corner identified and monument as found, set, reset, replaced, or removed:

See sheet #2 for description(s):

### SURVEYOR'S STATEMENT

This Corner Record was prepared by me or under my direction in conformance with the Professional Land Surveyors' Act on November 20, 2020

Signed [Signature] P.L.S. or R.C.E. No. 8080



### COUNTY SURVEYOR'S STATEMENT

This Corner Record was received November 30, 2020

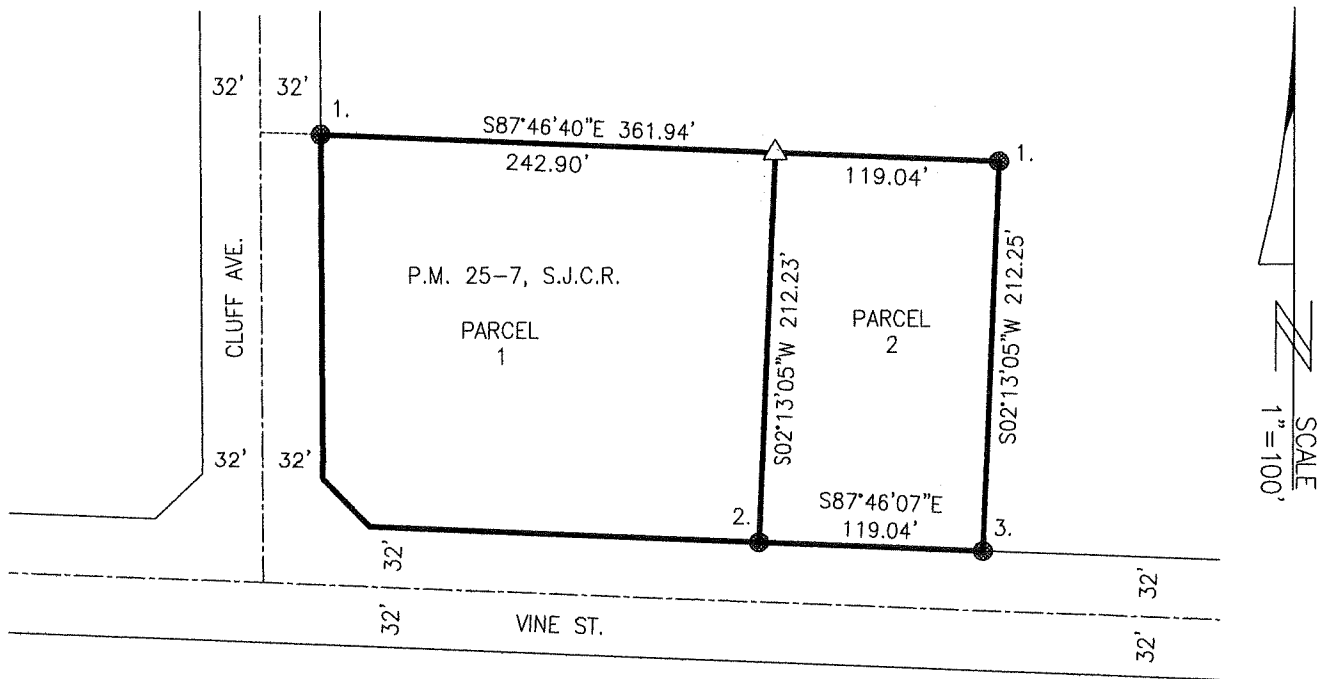
and examined and filed December 15, 2020

Signed James E. Hart P.L.S. or R.C.E. No. 8657

Title County Surveyor

County Surveyor's Comment





REFERENCES:

(R1) P.M. 25-7, S.J.C.R.

LEGEND:

S.J.C.R. SAN JOAQUIN COUNTY RECORDS  
P.M. PARCEL MAP, BOOK - PAGE, S.J.C.R.  
FD. FOUND  
● FOUND MONUMENT AS NOTED  
△ SEARCHED, FOUND NOTHING-SET COTTON SPINDLE WITH ALUMINUM WASHER STAMPED PLS8080

FOUND MONUMENTATION:

1. FD. 3/4" IRON PIN CAPPED "PLS 8080" ACCEPTED PER (R1).
2. FD. 3/4" IRON PIN ACCEPTED AS SET CAPPED "PLS 8080" PER (R1)-REPLACED CAP.
3. FD. 3/4" REBAR, NO TAG ACCEPTED AS FD. CAPPED "RCE 12685" PER (R1)-REPLACED WITH CAP STAMPED "PLS8080".