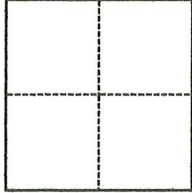


CORNER RECORD

Agency Index CR-20-225
Document Number _____

City of _____ County of San Joaquin, California
Brief Legal Description SW property corner shown on 39-R.S.-179

CORNER TYPE



- Government Corner
- Meander
- Rancho
- Control
- Property
- Other

Date of Survey October 13, 2020

COORDINATES (Optional)

N. _____ E. _____
 Elevation _____
 Units Metric U.S. Survey Foot
 Horizontal Datum _____
 Zone _____ Epoch Date _____
 Vertical Datum _____
 Complies with Public Resources Code §§8801-8819
 Complies with Public Resources Code §§8890-8902

PLS Act Ref.: 8765(d) 8771 8773 Other:
 Corner/Monument: Left as found Established Rebuilt Pre-Construction
 Found and tagged Reestablished Referenced Post-Construction

Narrative of corner identified and monument as found, set, reset, replaced, or removed:
 See sheet #2 for description(s):

SURVEYOR'S STATEMENT

This Corner Record was prepared by me or under my direction in conformance with
 the Professional Land Surveyors' Act on November 20, 2020
 Signed _____ P.L.S. or R.C.E. No. 8080

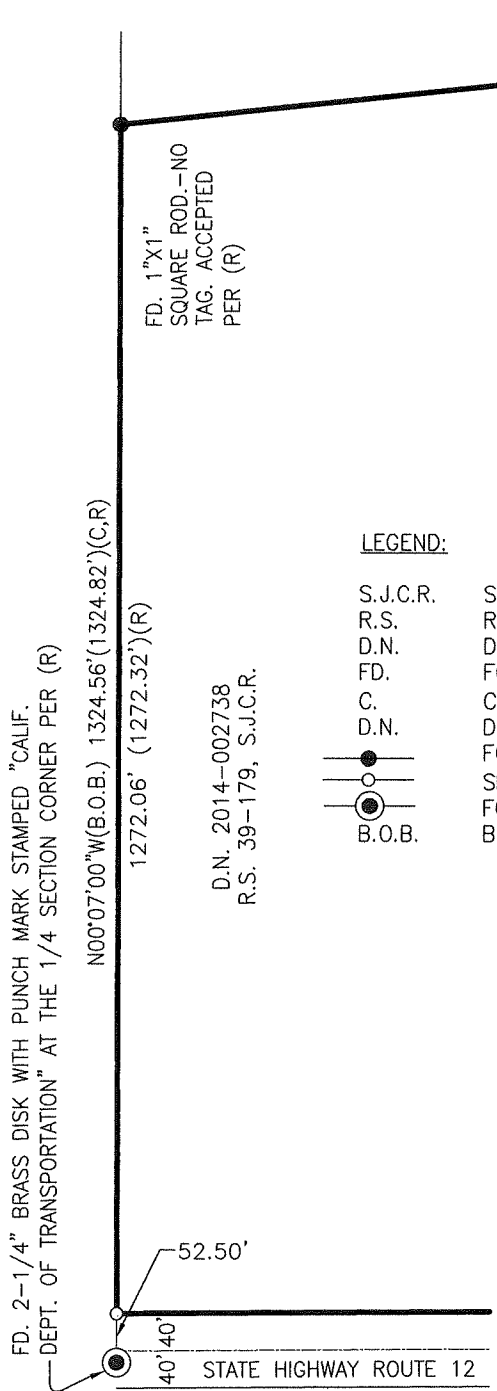


COUNTY SURVEYOR'S STATEMENT

This Corner Record was received November 30, 2020
 and examined and filed December 15, 2020
 Signed James E. Hart P.L.S. or R.C.E. No. 8657
 Title County Surveyor



County Surveyor's Comment



LEGEND:

- | | |
|----------|--|
| S.J.C.R. | SAN JOAQUIN COUNTY RECORDS |
| R.S. | RECORD OF SURVEY, BOOK - PAGE, S.J.C.R. |
| D.N. | DOCUMENT NUMBER, S.J.C.R. |
| FD. | FOUND |
| C. | CALCULATED FROM (R) |
| D.N. | DOCUMENT NUMBER, S.J.C.R. |
| | FOUND MONUMENT AS NOTED |
| | SET 3/4" BY 30" LONG REBAR WITH PLASTIC CAP STAMPED LS8080 |
| B.O.B. | FOUND MONUMENT IN MONUMENT WELL AS NOTED |
| | BASIS OF BEARINGS |



REFERENCE:

(R) R.S. 39-179, S.J.C.R.

BASIS OF BEARINGS:

THE WEST LINE OF SECTION 1, T. 3 N., R.7 E., M.D.B. & M.
BEING N00°07'00"W.