

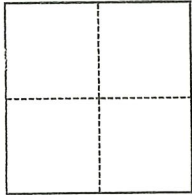
CORNER RECORD

Agency Index CR-20-220
Document Number _____

City of LODI County of SAN JOAQUIN, California
Brief Legal Description R.S. 39-142, S.J.C.R.

CORNER TYPE

COORDINATES (Optional)



- Government Corner
- Meander
- Rancho
- Control
- Property
- Other

Date of Survey October 17, 2019

N. _____ E. _____
 Elevation _____
 Units Metric U.S. Survey Foot
 Horizontal Datum _____
 Zone _____ Epoch Date _____
 Vertical Datum _____
 Complies with Public Resources Code §§8801-8819
 Complies with Public Resources Code §§8890-8902

PLS Act Ref.: 8765(d) 8771 8773 Other:
 Corner/Monument: Left as found Established Rebuilt Pre-Construction
 Found and tagged Reestablished Referenced Post-Construction

Narrative of corner identified and monument as found, set, reset, replaced, or removed:
 See sheet #2 for description(s):

**FOUND MONUMENTS PER R.S. 39-142, S.J.C.R. AS SHOWN ON THIS CORNER RECORD.
MONUMENTS ARE SUBJECT TO DISTURBANCE OR COVERED OVER BY CONCRETE.**

SURVEYOR'S STATEMENT

This Corner Record was prepared by me or under my direction in conformance with
 the Professional Land Surveyors' Act on 11/10/2020
 Signed Walter John Shoup P.L.S. or R.C.E. No. 7736



COUNTY SURVEYOR'S STATEMENT

This Corner Record was received November 10, 2020
 and examined and filed December 3, 2020
 Signed James E. Hart P.L.S. or R.C.E. No. 8657
 Title County Surveyor



County Surveyor's Comment

BASIS OF BEARINGS:

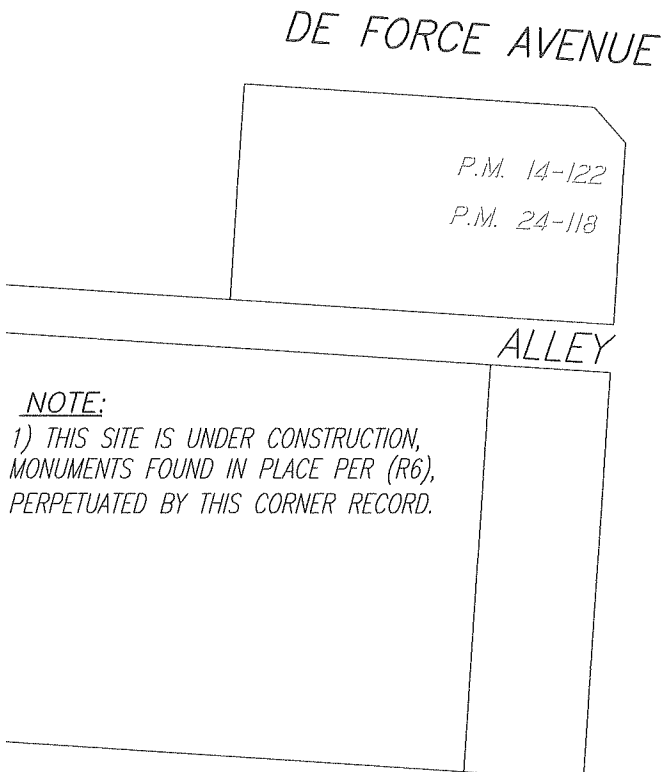
THE CENTERLINE OF U.P.R.R. BEARS $N03^{\circ}46'28''E$ PER (R6).

LEGEND:

- FD. FOUND
- D.N. RECORDER'S DOCUMENT NUMBER, S.J.C.R.
- I.N. RECORDER'S INSTRUMENT NUMBER, S.J.C.R.
- (C) CALCULATED DATA
- (M) MEASURED DATA
- R.S. RECORD OF SURVEY, BOOK-PAGE, S.J.C.R.
- P.M. PARCEL MAP, BOOK-PAGE, S.J.C.R.
- M.&P. MAP AND PLATS, VOL.-PAGE, S.J.C.R.
- S.J.C.R. SAN JOAQUIN COUNTY RECORDS
- S.J.C.S.R. SAN JOAQUIN COUNTY SURVEYOR'S RECORDS

MONUMENTS FOUND

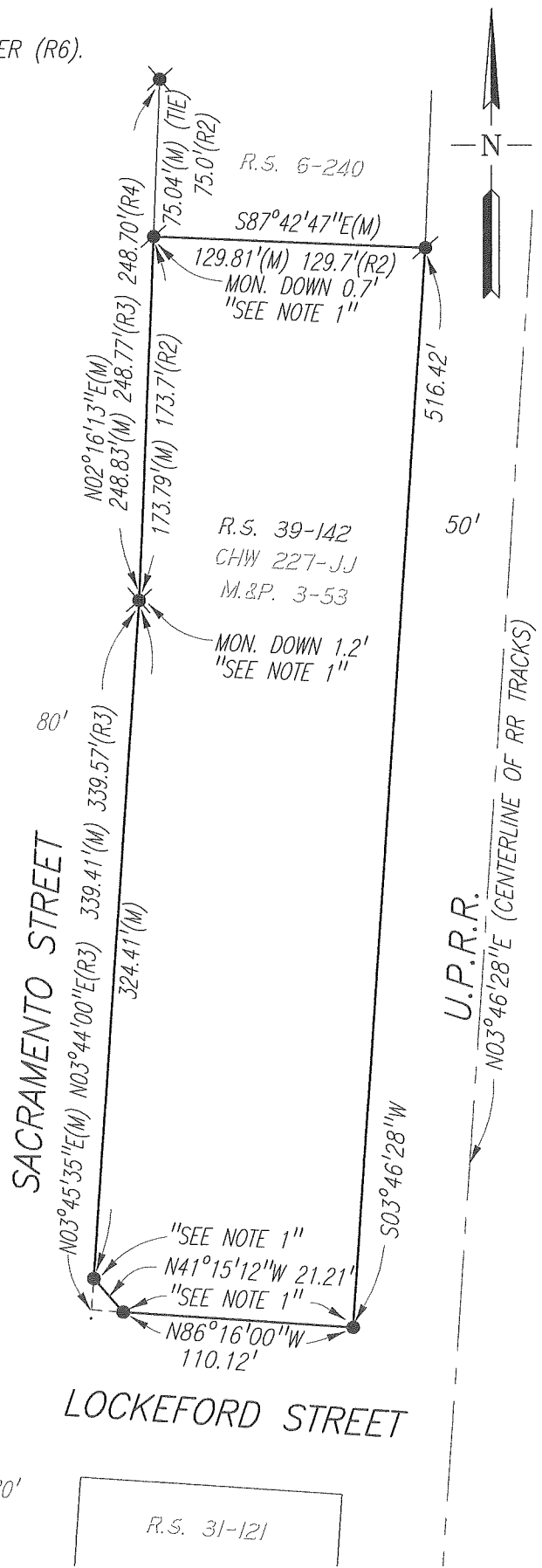
- FD. 3/4" REBAR WITH CAP STAMPED "PLS 7736" PER (R6),
- X— FD. AXLE PER (R4), NO TAG
- FD. 3/4" IRON PIPE TAGGED "LS 2273" PER (R2) P.M. 8-22



NOTE:
1) THIS SITE IS UNDER CONSTRUCTION, MONUMENTS FOUND IN PLACE PER (R6), PERPETUATED BY THIS CORNER RECORD.

REFERENCES:

- (R1) R.S. 31-121, S.J.C.R.
- (R2) R.S. 6-240, S.J.C.R.
- (R3) P.M. 24-118, S.J.C.R.
- (R4) CHW 227-JJ, S.J.C.S.R.
- (R5) P.M. 22-91, S.J.C.R.
- (R6) R.S. 39-142, S.J.C.R.



Scale: 1"=80'	CORNER RECORD LODI BOWLING ALLEY - R.S. 39-142, S.J.C.R.	Date: 11/10/2020
Job No.: 17-171		DWG: 17171CR-PRECONST