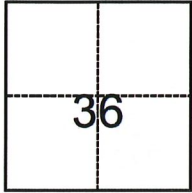


CORNER RECORD

Agency Index CR-20-218
Document Number _____

City of Lodi County of San Joaquin, California
Brief Legal Description Lot 4, M.&P. 26-158, San Joaquin County Records



CORNER TYPE

- Government Corner
- Meander
- Rancho
- Control
- Property
- Other

Date of Survey September 8, 2020

COORDINATES (Optional)

N. _____ E. _____
 Elevation _____
 Units Metric U.S. Survey Foot
 Horizontal Datum _____
 Zone _____ Epoch Date _____
 Vertical Datum _____
 Complies with Public Resources Code §§8801-8819
 Complies with Public Resources Code §§8890-8902

T.4N., R.6E., M.D.B.&M.

- PLS Act Ref.: 8765(d) 8771 8773 Other:
- Corner/Monument: Left as found Established Rebuilt Pre-Construction
 Found and tagged Reestablished Referenced Post-Construction

Narrative of corner identified and monument as found, set, reset, replaced, or removed:
 See sheet #2 for description(s):

SURVEYOR'S STATEMENT

This Corner Record was prepared by me or under my direction in conformance with
 the Professional Land Surveyors' Act on November 18, 2020
 Signed Joe Murphy P.L.S. or R.C.E. No. L.S. 7269



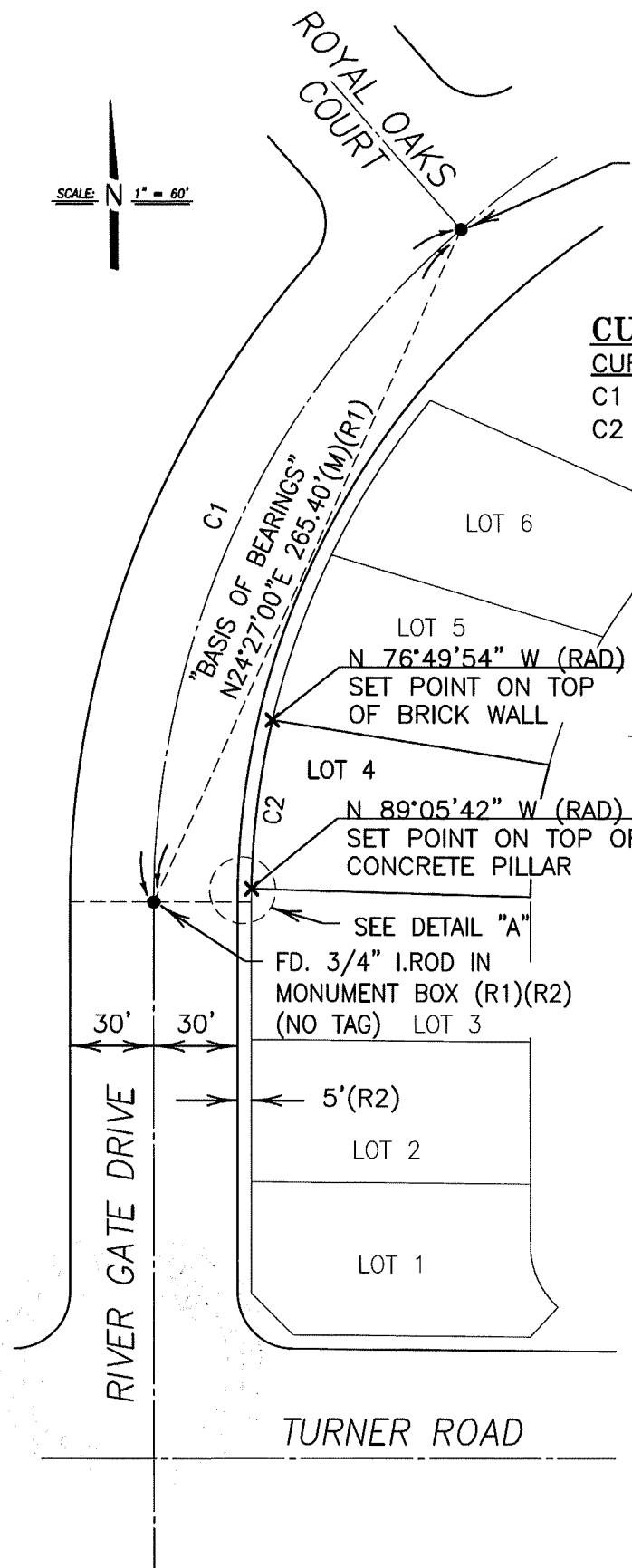
COUNTY SURVEYOR'S STATEMENT

This Corner Record was received November 20, 2020
 and examined and filed December 3, 2020
 Signed James E. Hart P.L.S. or R.C.E. No. 8657
 Title County Surveyor



County Surveyor's Comment

SCALE: N 1" = 60'

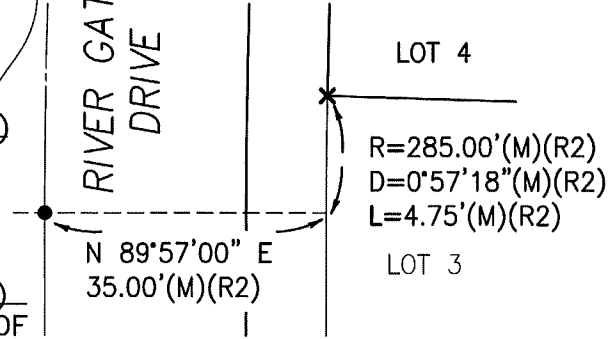


FD. 3/4" I.ROD IN
MONUMENT BOX(R1)(R2)
(NO TAG)

CURVE TABLE(R1)(R2)

CURVE	RADIUS	DELTA	LENGTH
C1	320.00'	49°00'00"	273.67'
C2	285.00'	12°15'48"	61.00'

RIVER GATE DRIVE



DETAIL "A"

NOT TO SCALE

REFERENCES:

- (R1) M.&P. 22-27, S.J.C.R.
- (R2) M.&P. 26-158, S.J.C.R.

LEGEND

- FD. FOUND
- I.ROD IRON ROD
- x SET CHISELED "X"
- FD. MONUMENT AS NOTED
- S.J.C.R. SAN JOAQUIN COUNTY RECORDS
- RAD RADIAL BEARING
- R RADIUS
- D DELTA
- L ARC LENGTH

DILLON & MURPHY

CONSULTING CIVIL ENGINEERS
ENGINEERING • PLANNING • SURVEYING
847 N. CLUFF AVENUE, SUITE A2, Lodi, CALIFORNIA 95240 (209) 334-6613

20105