

CORNER RECORD

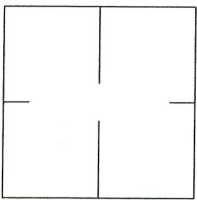
Agency Index CR-20-216

Document Number _____

City of STOCKTON

County of SAN JOAQUIN, California

Brief Legal Description CUT "+" AT SOUTHEAST CORNER OF CALIFORNIA STREET AND MINER AVENUE.



C.M. WEBER
GRANT

CORNER TYPE

- Government Corner Control
- Meander Property
- Rancho Other

Date of Survey MARCH 13, 2020

COORDINATES (Optional)

- N. _____ E. _____
- Elevation _____
- Units Metric U.S. Survey Foot
- Horizontal Datum _____
- Zone _____ Epoch Date _____
- Vertical Datum: _____
- Complies with Public Resources Code §§8801-8819
- Complies with Public Resources Code §§8890-8902

PLS Act Ref.: 8765(d) 8771 8773 Other: _____

Corner/Monument: Left as found Established Rebuilt Pre-Construction
 Found and tagged Reestablished Referenced Post-Construction

Narrative of corner identified and monument as found, set, reset, replaced, or removed:
 See sheet #2 for description(s):

SURVEYOR'S STATEMENT

This Corner Record was prepared by me or under my direction in conformance with the Professional Land Surveyor's Act on JUNE 2019, 2020.

Signed [Signature] P.L.S. or R.C.E. No.: _____



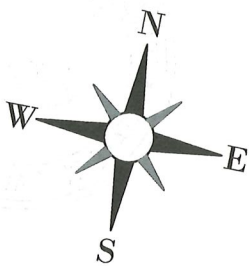
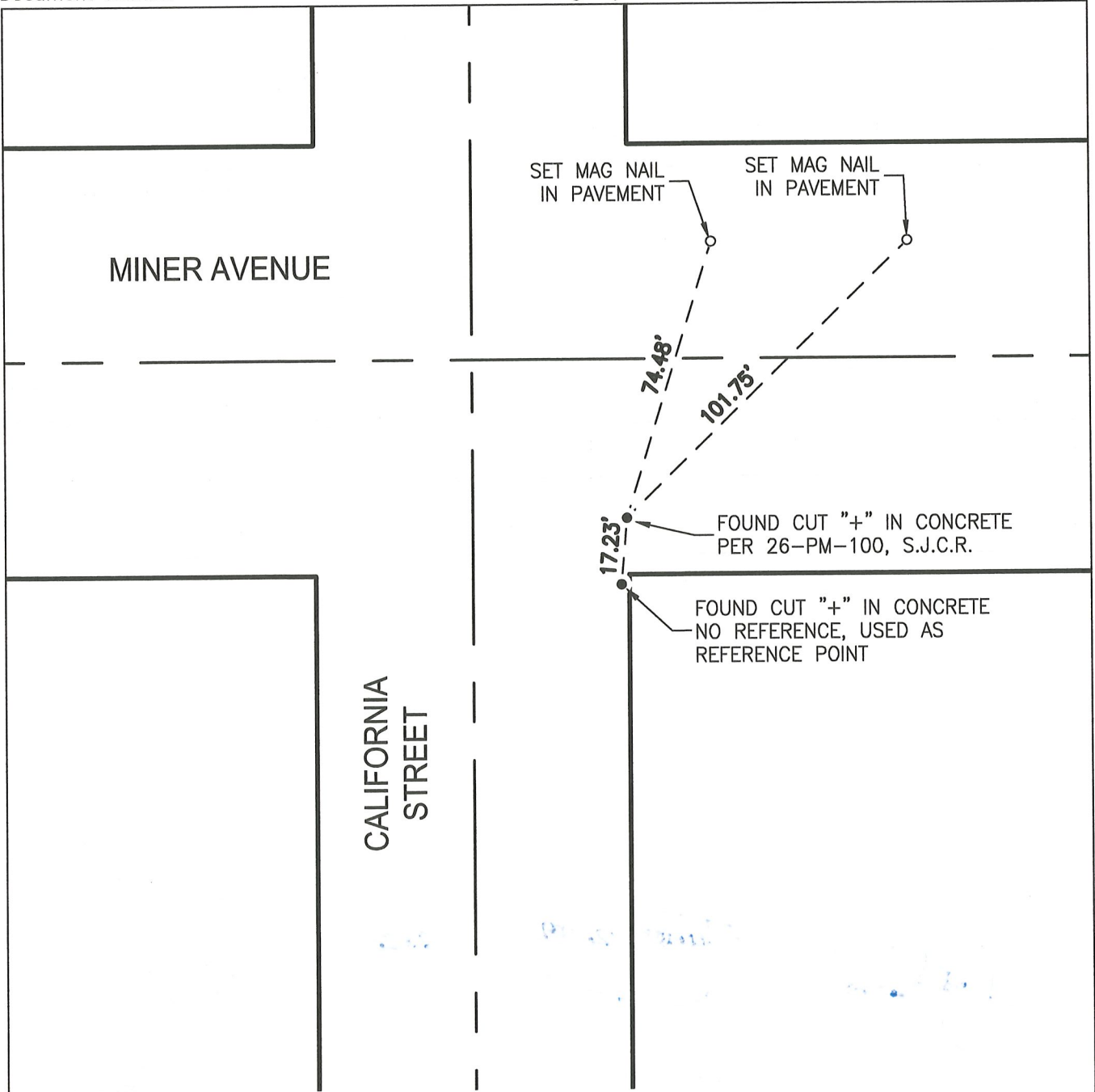
COUNTY SURVEYOR'S STATEMENT

This Corner Record was received November 4, 2020 and examined and filed November 24, 2020.

Signed James E. Hart P.L.S. or R.C.E. No.: 8657
Title County Surveyor



County Surveyor's Comment _____



LEGEND:

PM PARCEL MAP
 S.J.C.R. SAN JOAQUIN COUNTY RECORDS

