

CORNER RECORD

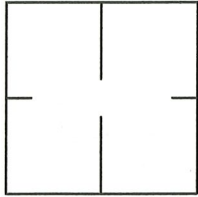
Agency Index CR-20-213

Document Number _____

City of STOCKTON

County of SAN JOAQUIN, California

Brief Legal Description MONUMENTS AT INTERSECTION OF MINER AVENUE AND STANISLAUS STREET.



C.M. WEBER
GRANT

CORNER TYPE

Government Corner Control
 Meander Property
 Rancho Other

Date of Survey MARCH 13, 2020

COORDINATES (Optional)

N. _____ E. _____

Elevation _____

Units Metric U.S. Survey Foot

Horizontal Datum _____

Zone _____ Epoch Date _____

Vertical Datum: _____

Complies with Public Resources Code §§8801-8819

Complies with Public Resources Code §§8890-8902

PLS Act Ref.: 8765(d) 8771 8773 Other: _____

Corner/Monument: Left as found Established Rebuilt Pre-Construction
 Found and tagged Reestablished Referenced Post-Construction

Narrative of corner identified and monument as found, set, reset, replaced, or removed:

See sheet #2 for description(s):

SURVEYOR'S STATEMENT

This Corner Record was prepared by me or under my direction in conformance with the Professional Land Surveyor's Act on JUNE 20TH, 2020.

Signed [Signature] P.L.S. or R.C.E. No.: 83106



COUNTY SURVEYOR'S STATEMENT

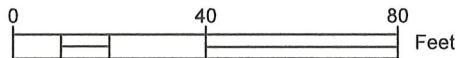
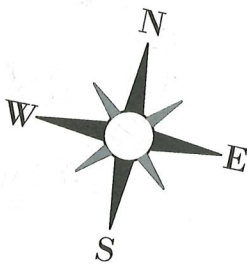
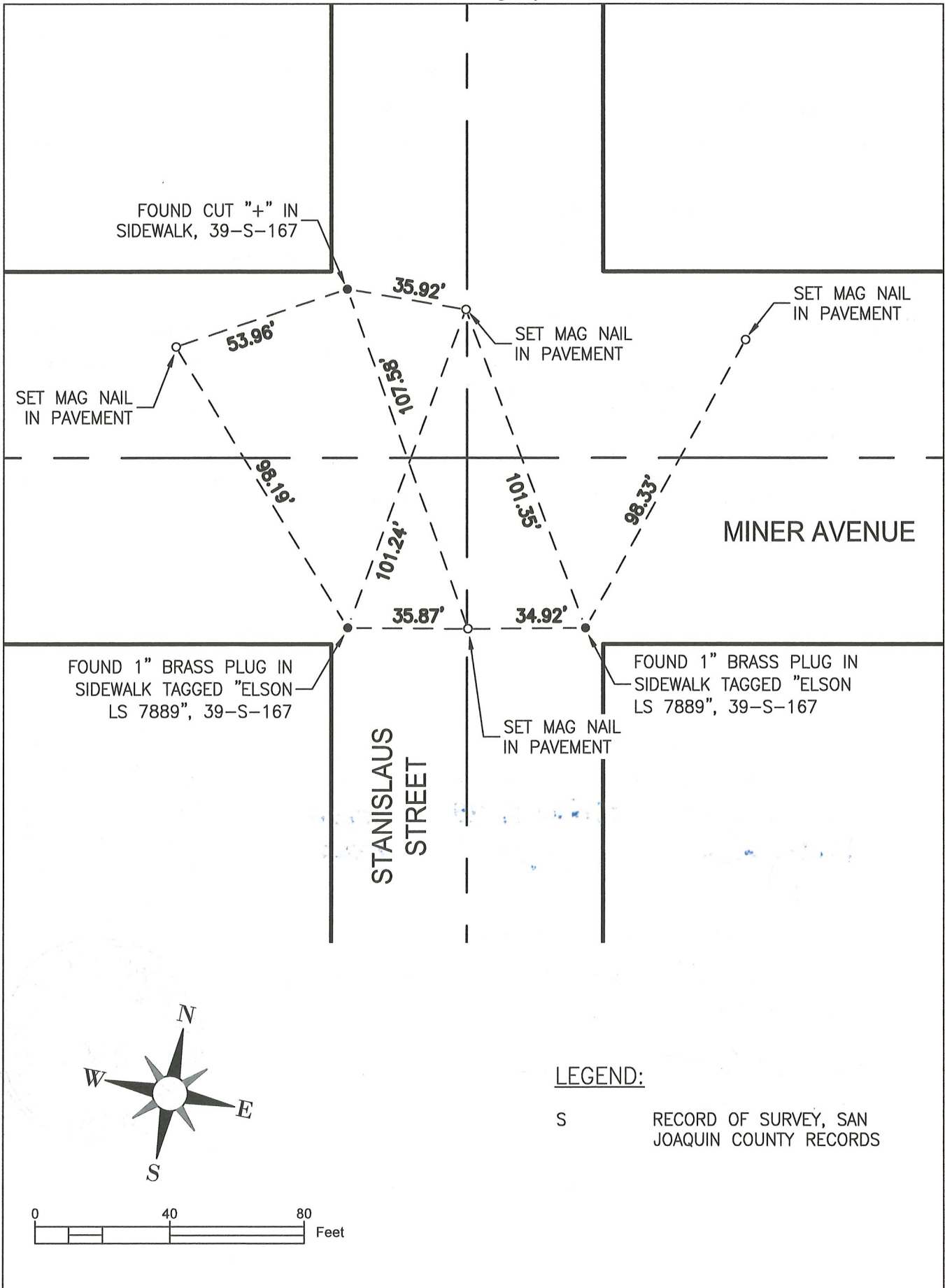
This Corner Record was received November 4, 2020 and examined and filed November 24, 2020.

Signed James E. Hart P.L.S. or R.C.E. No.: 8657

Title County Surveyor

County Surveyor's Comment _____





LEGEND:

S RECORD OF SURVEY, SAN JOAQUIN COUNTY RECORDS