

CORNER RECORD

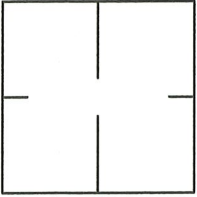
Agency Index CR-20-211

Document Number _____

City of STOCKTON

County of SAN JOAQUIN, California

Brief Legal Description CUT "+" ON SOUTH SIDE OF MINER AVENUE, 142'± AND 192'± EAST OF GRANT STREET



C.M. WEBER
GRANT

CORNER TYPE

Government Corner Control
 Meander Property
 Rancho Other

Date of Survey MARCH 13, 2020

COORDINATES (Optional)

N. _____ E. _____

Elevation _____

Units Metric U.S. Survey Foot

Horizontal Datum _____

Zone _____ Epoch Date _____

Vertical Datum: _____

Complies with Public Resources Code §§8801-8819

Complies with Public Resources Code §§8890-8902

PLS Act Ref.: 8765(d) 8771 8773 Other: _____

Corner/Monument: Left as found Established Rebuilt Pre-Construction
 Found and tagged Reestablished Referenced Post-Construction

Narrative of corner identified and monument as found, set, reset, replaced, or removed:

See sheet #2 for description(s):

SURVEYOR'S STATEMENT

This Corner Record was prepared by me or under my direction in conformance with the Professional Land Surveyor's Act on JUNE 20TH, 2020.

Signed [Signature] P.L.S. or R.C.E. No.: 8366



COUNTY SURVEYOR'S STATEMENT

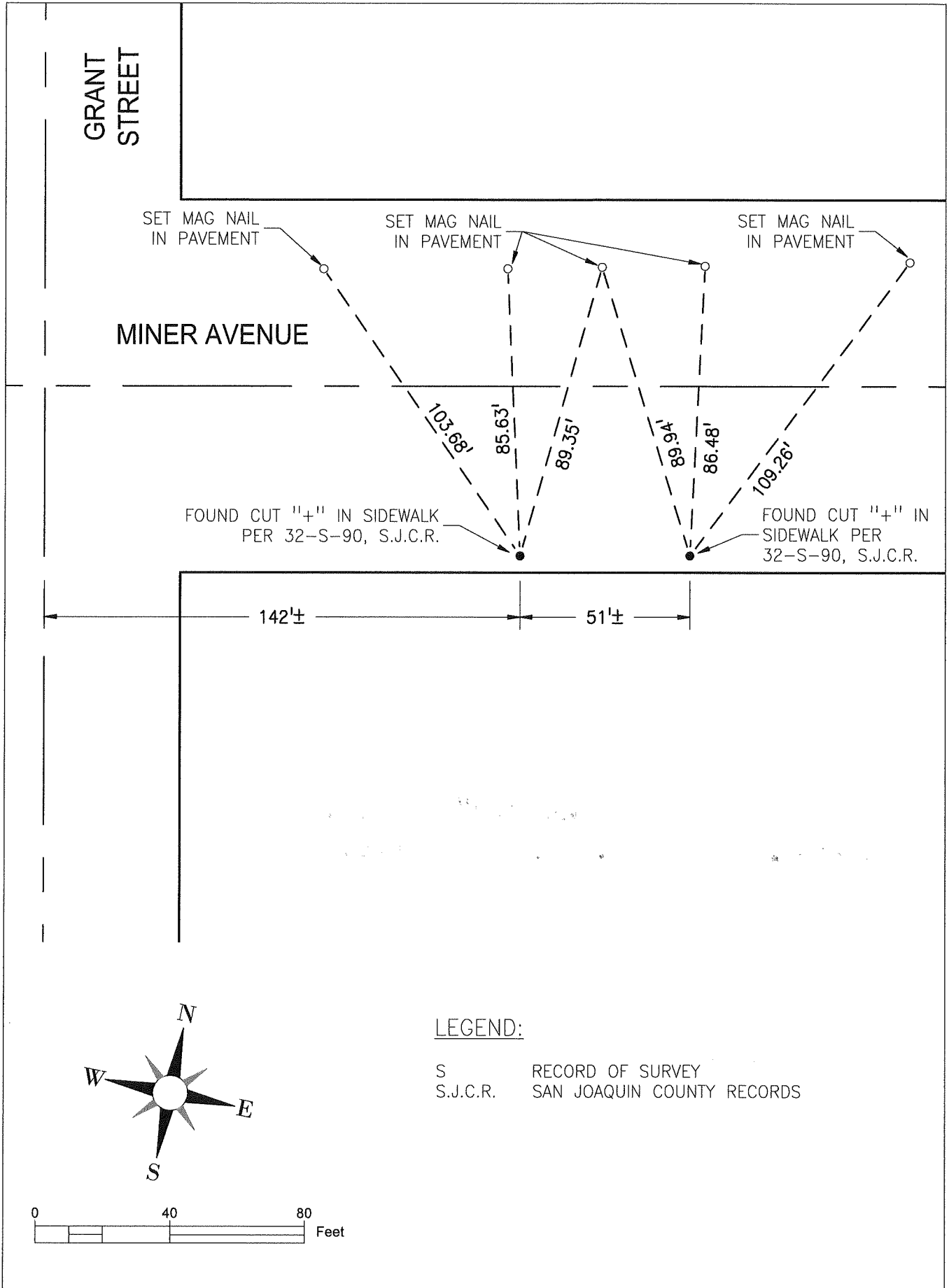
This Corner Record was received November 4, 2020 and examined and filed November 24, 2020.

Signed James E. Hart P.L.S. or R.C.E. No.: 8657

Title County Surveyor

County Surveyor's Comment _____





LEGEND:

S RECORD OF SURVEY
 S.J.C.R. SAN JOAQUIN COUNTY RECORDS

