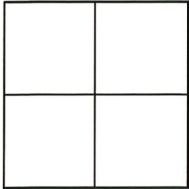


CORNER RECORD

Agency Index CR-20-207
 Document Number _____
 County of SAN JOAQUIN, California

City of STOCKTON

Brief Legal Description MONUMENT AT NORTHEAST CORNER OF FILBERT STREET & MINER AVENUE, AS SHOWN ON RECORD OF SURVEY FILED IN BOOK 35 OF SURVEYS, AT PAGE 197, SAN JOAQUIN COUNTY RECORDS.



CORNER TYPE

- Government Corner Control
 Meander Property
 Rancho Other

COORDINATES (Optional)

- N. _____ E. _____
 Elevation _____
 Units Metric U.S. Survey Foot
 Horizontal Datum _____
 Zone _____ Epoch Date _____
 Vertical Datum _____
 Complies with Public Resources Code §§8801-8819
 Complies with Public Resources Code §§8890-8902

Date of Survey SEPT. 11, 2020

- PLS Act Ref: 8765(d) 8771 8773 Other:
 Corner/Monument: Left as found Established Rebuilt Pre-Construction
 Found and tagged Reestablished Referenced Post-Construction

Narrative of corner identified and monument as found, set, reset, replaced, or removed:

See sheet #2 for description (s):

FOUND 1" BRASS DISK IN CONCRETE, STAMPED PLS 5859, LOCATED AT THE NORTHEASTERLY CORNER OF INTERSECTION AT FILBERT ST. AND MINER AVE. SET REFERENCE POINTS, NAIL & TAG, STAMPED LS 8593, TO BE USED TO RESET MONUMENT SHOULD IT BE DISTURBED DURING CONSTRUCTION ACTIVITIES. SEE SHEET 2 FOR GRAPHIC

SURVEYOR'S STATEMENT

This Corner Record was prepared by me or under my direction in conformance with the Professional Land Surveyors' Act on OCTOBER 21, 2020

Signed [Signature] (P.L.S. or R.C.E. No. 8593)



COUNTY SURVEYOR'S STATEMENT

This Corner Record was received NOVEMBER 3, 2020

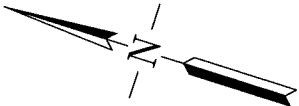
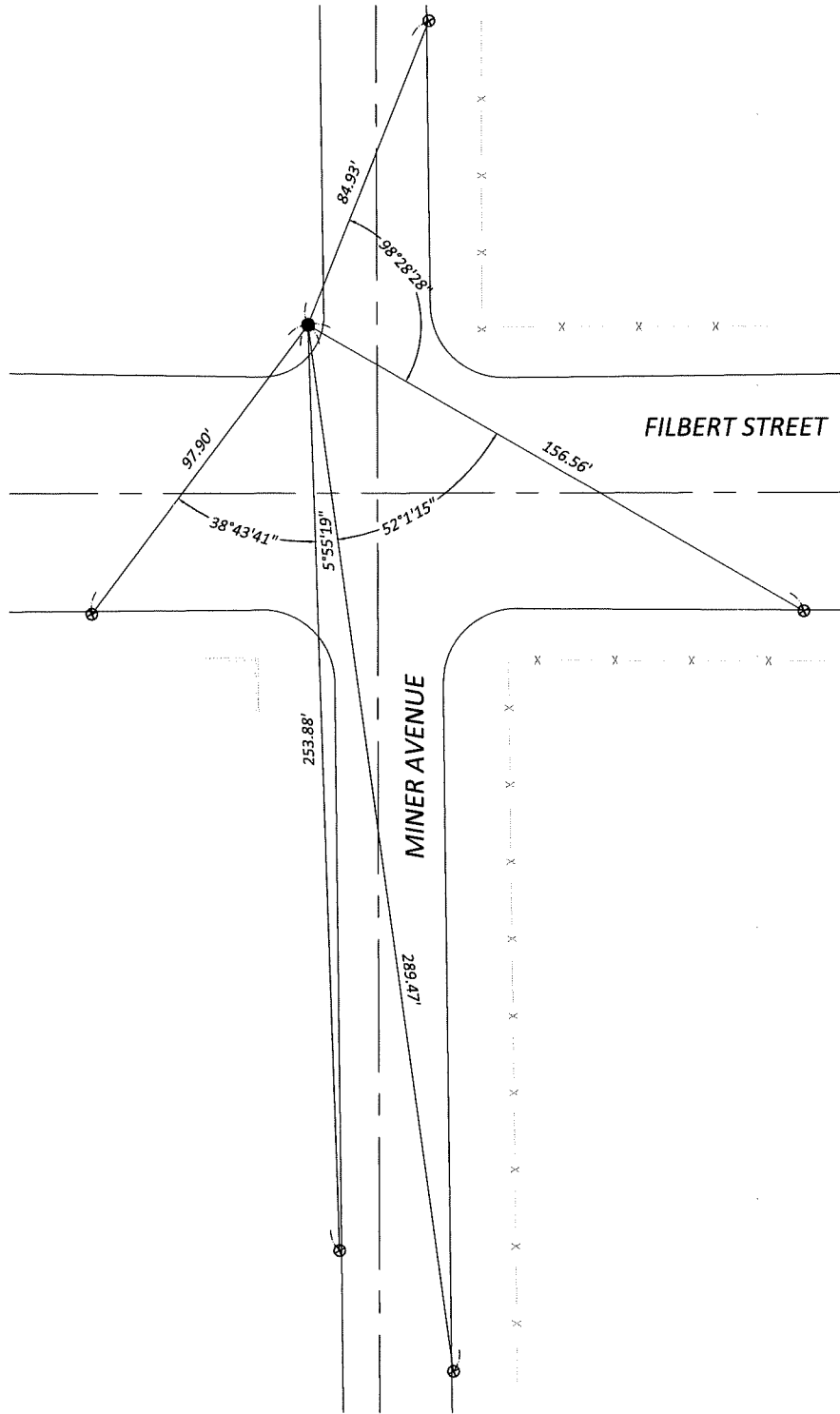
and examined and filed NOVEMBER 17, 2020

Signed James E Hart P.L.S. or R.C.E. No. 8657

Title County Surveyor



County Surveyor's Comment _____



NOT TO SCALE

LEGEND

- FOUND 1" BRASS DISK STAMPED PLS 5859 PER RS 35-197
- ⊗ SET REFERENCE POINT, NAIL & TAG STAMPED LS 8593
- RS RECORD OF SURVEY