

# CORNER RECORD

Agency Index CR-20-204  
Document Number \_\_\_\_\_

City of \_\_\_\_\_ County of San Joaquin, California  
Brief Legal Description Parcel 3, per P.M. 24-67, San Joaquin County Records

### CORNER TYPE

### COORDINATES (Optional)



- Government Corner
- Meander
- Rancho
- Control
- Property
- Other

N. \_\_\_\_\_ E. \_\_\_\_\_

Elevation \_\_\_\_\_

Units  Metric  U.S. Survey Foot

Horizontal Datum \_\_\_\_\_

Zone \_\_\_\_\_ Epoch Date \_\_\_\_\_

Vertical Datum \_\_\_\_\_

Complies with Public Resources Code §§8801-8819

Complies with Public Resources Code §§8890-8902

Date of Survey October 8, 2020

T.3N. R.8E.  
M.D.B.&M.

PLS Act Ref.:  8765(d)  8771  8773  Other:

Corner/Monument:  Left as found  Established  Rebuilt  Pre-Construction

Found and tagged  Reestablished  Referenced  Post-Construction

Narrative of corner identified and monument as found, set, reset, replaced, or removed:

See sheet #2 for description(s):

### SURVEYOR'S STATEMENT



This Corner Record was prepared by me or under my direction in conformance with  
the Professional Land Surveyors' Act on November 3, 2020

Signed [Signature] P.L.S. or R.C.E. No. 7269

### COUNTY SURVEYOR'S STATEMENT

This Corner Record was received November 4, 2020

and examined and filed November 17, 2020

Signed [Signature] P.L.S. or R.C.E. No. 8657

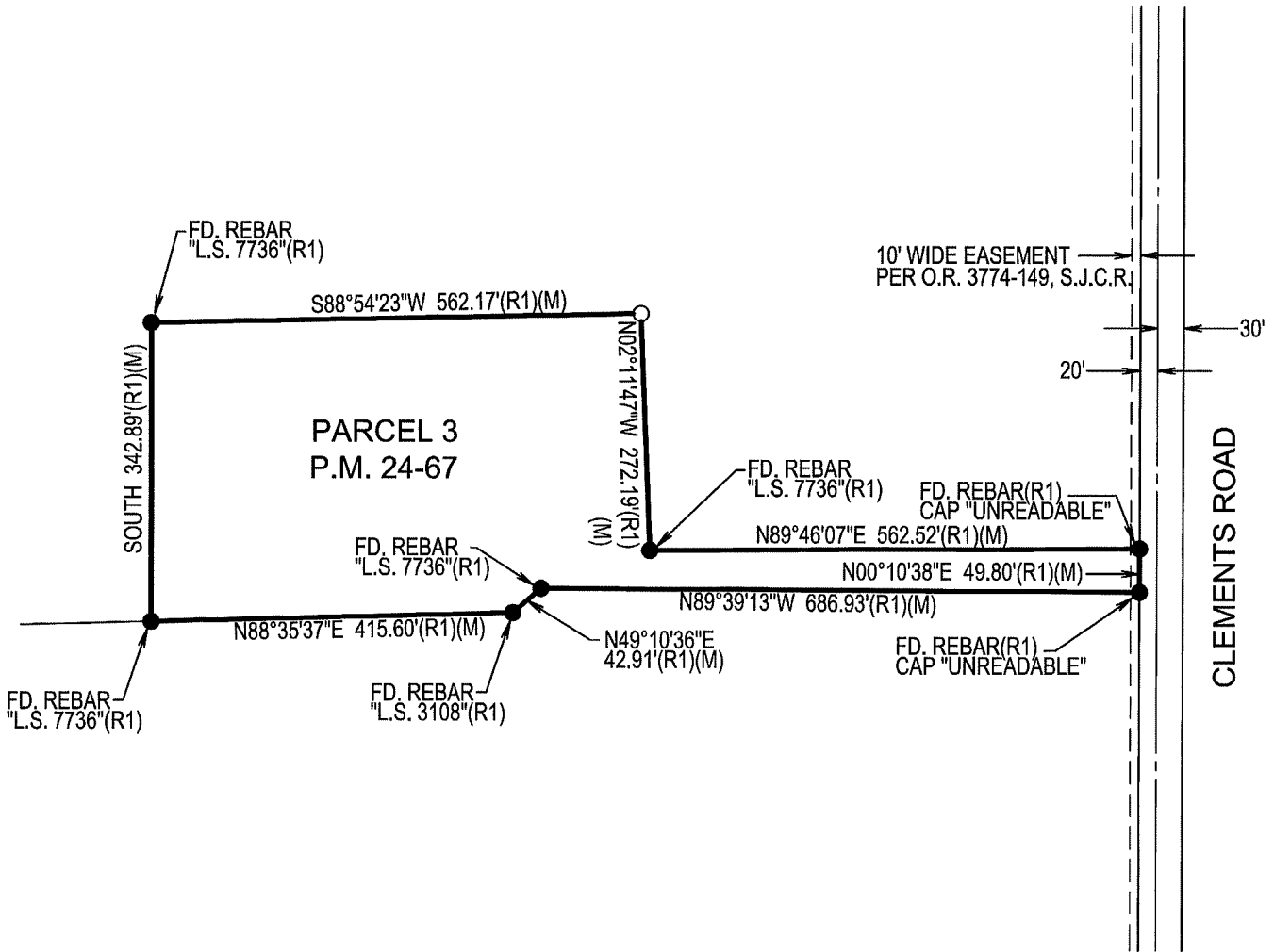
Title County Surveyor

County Surveyor's Comment





SCALE: NOT TO SCALE



**REFERENCES**

(R1) P.M. 24-67

**LEGEND**

- FD. FOUND
- S.J.C.R. SAN JOAQUIN COUNTY RECORDS
- P.M. PARCEL MAPS
- (M) MEASURED
- O.R. OFFICAL RECORDS
- SET 3/4" X 30" IRON ROD  
CAPPED "L.S. 7269"
- FOUND MONUMENT  
AS NOTED