

# CORNER RECORD

Agency Index CR-20-186

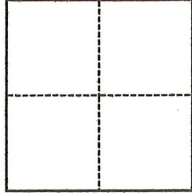
Document Number \_\_\_\_\_

City of Stockton County of San Joaquin, California

Brief Legal Description Lot 44, 21 M. & P. 63, S.J.C.R.

### CORNER TYPE

### COORDINATES (Optional)



- Government Corner
- Meander
- Rancho
- Control
- Property
- Other

Date of Survey September 8, 2020

N. \_\_\_\_\_ E. \_\_\_\_\_

Elevation \_\_\_\_\_

Units  Metric  U.S. Survey Foot

Horizontal Datum \_\_\_\_\_

Zone \_\_\_\_\_ Epoch Date \_\_\_\_\_

Vertical Datum \_\_\_\_\_

Complies with Public Resources Code §§8801-8819

Complies with Public Resources Code §§8890-8902

PLS Act Ref.:  8765(d)  8771  8773  Other:

Corner/Monument:  Left as found  Established  Rebuilt  Pre-Construction

Found and tagged  Reestablished  Referenced  Post-Construction

Narrative of corner identified and monument as found, set, reset, replaced, or removed:

See sheet #2 for description(s):

### SURVEYOR'S STATEMENT

This Corner Record was prepared by me or under my direction in conformance with the Professional Land Surveyors' Act on October 9, 2020

Signed [Signature] P.L.S. or R.C.E. No. 8080



### COUNTY SURVEYOR'S STATEMENT

This Corner Record was received October 13, 2020

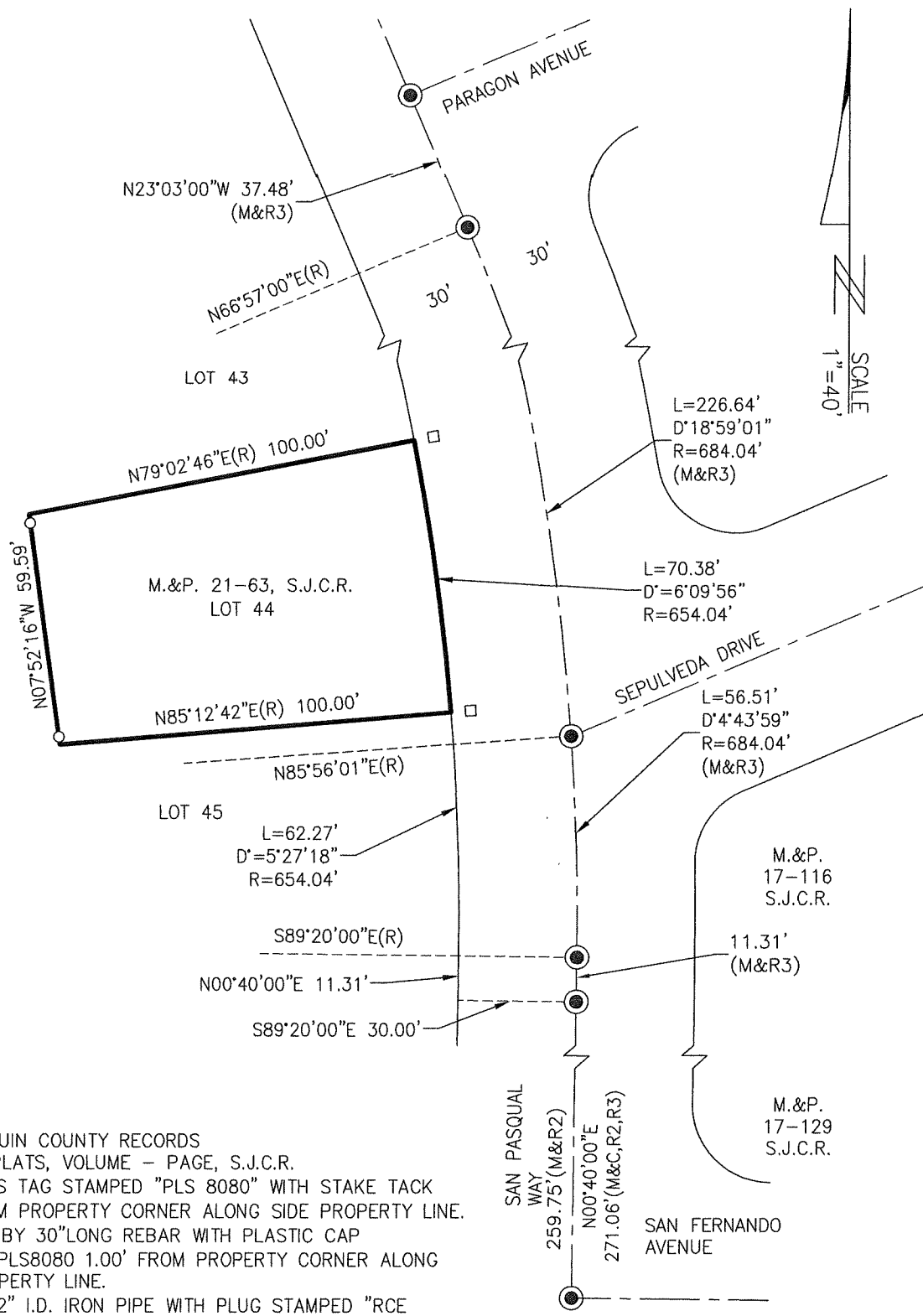
and examined and filed October 29, 2020

Signed James E. Hart P.L.S. or R.C.E. No. 8657

Title County Surveyor

County Surveyor's Comment





**LEGEND:**

- S.J.C.R. SAN JOAQUIN COUNTY RECORDS
- M.&P. MAPS & PLATS, VOLUME - PAGE, S.J.C.R.
- SET BRASS TAG STAMPED "PLS 8080" WITH STAKE TACK 5.00' FROM PROPERTY CORNER ALONG SIDE PROPERTY LINE.
- SET 3/4" BY 30" LONG REBAR WITH PLASTIC CAP STAMPED PLS8080 1.00' FROM PROPERTY CORNER ALONG REAR PROPERTY LINE.
- FOUND 1/2" I.D. IRON PIPE WITH PLUG STAMPED "RCE 8189" IN MONUMENT WELL. ACCEPTED AS PIPES CALLED OUT AS "3/4 DIAMETER" IN (R2) & (R3).
- (R) RADIAL BEARING
- (C) CALCULATED FROM RECORD DATA

**REFERENCES:**

- (R1) M.&P. 21-63, S.J.C.R.
- (R2) M.&P. 17-129, S.J.C.R.
- (R3) M.&P. 17-116, S.J.C.R.