

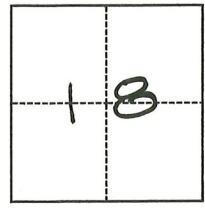
CORNER RECORD

Agency Index CR-20-184
Document Number _____

City of _____ County of San Joaquin, California
Brief Legal Description 10.05 +/- AC. PARCEL, 15 R.S. 134, S.J.C.R.

CORNER TYPE

COORDINATES (Optional)



- Government Corner
- Meander
- Rancho
- Control
- Property
- Other

N. _____ E. _____
 Elevation _____
 Units Metric U.S. Survey Foot
 Horizontal Datum _____
 Zone _____ Epoch Date _____
 Vertical Datum _____
 Complies with Public Resources Code §§8801-8819
 Complies with Public Resources Code §§8890-8902

Date of Survey September 4, 2020

T. 4N., R. 7E.

- PLS Act Ref.: 8765(d) 8771 8773 Other:
- Corner/Monument: Left as found Established Rebuilt Pre-Construction
 Found and tagged Reestablished Referenced Post-Construction

Narrative of corner identified and monument as found, set, reset, replaced, or removed:
 See sheet #2 for description(s):

SURVEYOR'S STATEMENT

This Corner Record was prepared by me or under my direction in conformance with
 the Professional Land Surveyors' Act on October 2, 2020
 Signed [Signature] P.L.S. or R.C.E. No. 8080



COUNTY SURVEYOR'S STATEMENT

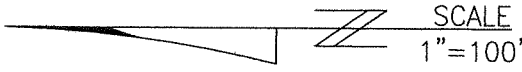
This Corner Record was received October 8, 2020
 and examined and filed October 22, 2020
 Signed James E Hart P.L.S. or R.C.E. No. 8657
 Title County Surveyor



County Surveyor's Comment

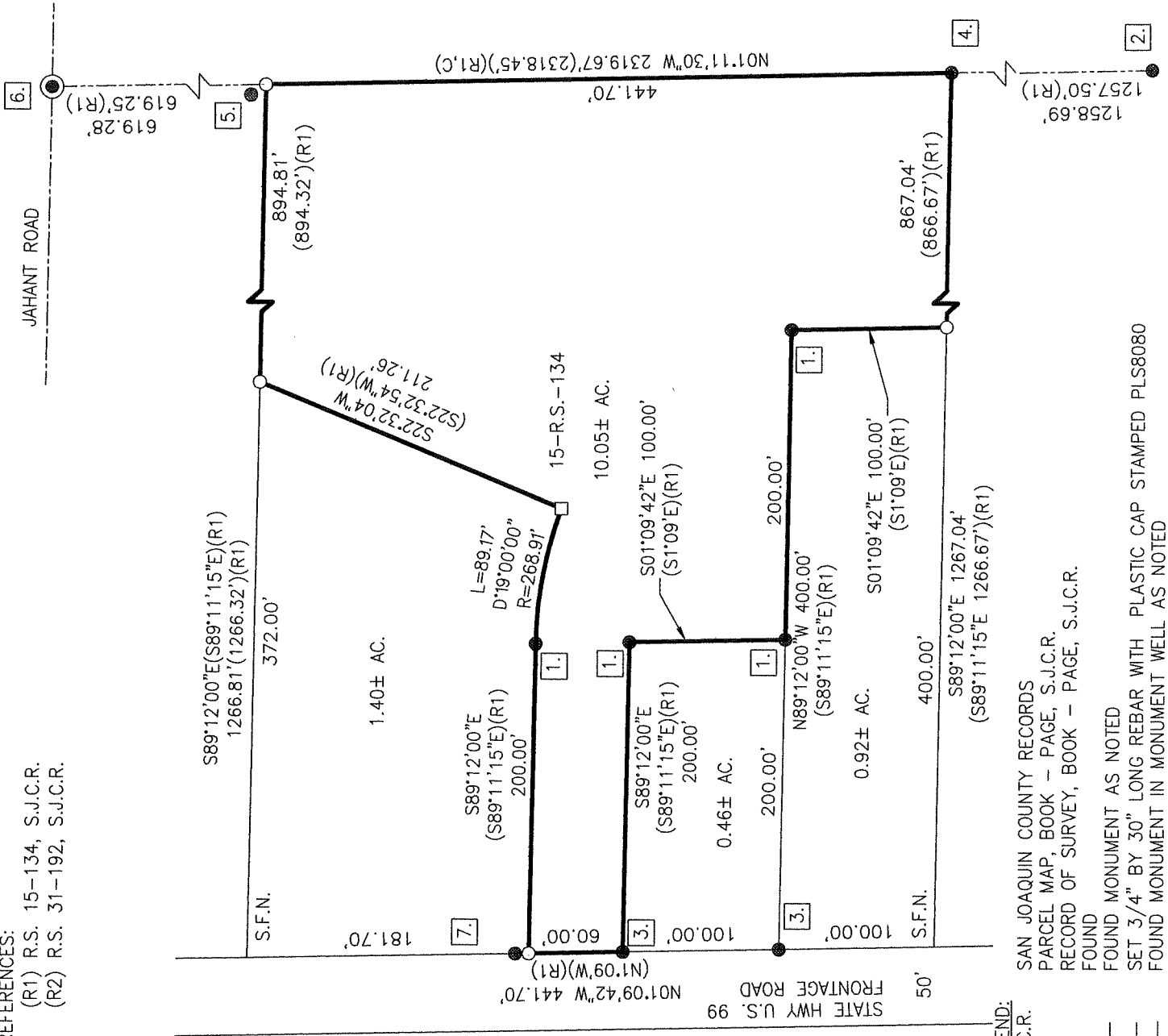
REFERENCES:

- (R1) R.S. 15-134, S.J.C.R.
- (R2) R.S. 31-192, S.J.C.R.



FOUND MONUMENT TABLE:

1. FOUND 3/4" REBAR-NO TAG. ACCEPTED AS ORIGINAL CORNER PER (R1)
2. FOUND AXLE-NO TAG. ACCEPTED AS ORIGINAL CORNER PER (R1)
3. FOUND 3/4" REBAR, BADLY RUSTED-NO TAG. ACCEPTED AS ORIGINAL CORNER PER (R1)
4. FOUND 3/4" REBAR, BENT IN FLOW DISK-NO TAG. ACCEPTED AS ORIGINAL CORNER PER (R1). MEASURED TO POINT OF ROTATION.
5. FOUND 3/4" REBAR, BENT -NO TAG N14°24'54"W 0.82' FROM CALCULATED CORNER. REPLACED WITH 30" LONG REBAR WITH PLASTIC CAP STAMPED PLS8080.
6. FOUND BOLT & WASHER PER (R2). ACCEPTED AS 1/4, 1/4 CORNER PER (R1) & (R2).
7. FOUND 1/2" REBAR, NO REF.-NO TAG N2°21'16"W 4.17' FROM CALCULATED CORNER.



LEGEND:

- S.J.C.R.
- P.M.
- R.S.
- FD.
- FOUND MONUMENT AS NOTED
- SET 3/4" BY 30" LONG REBAR WITH PLASTIC CAP STAMPED PLS8080
- FOUND MONUMENT IN MONUMENT WELL AS NOTED
- SET BRASS TAG STAMPED "LS 8080" WITH STAKE TACK
- SEARCHED, FOUND NOTHING
- CALCULATED FROM RECORD DATA