

CORNER RECORD

Agency Index CR-20-165

Document Number _____

City of _____ County of San Joaquin, California

Brief Legal Description _____ Record of Survey Volume 7, Page 63

CORNER TYPE

COORDINATES (Optional)



- Government Corner
- Meander
- Rancho
- Control
- Property
- Other

Date of Survey August 6, 2020

N. _____ E. _____

Elevation _____

Units Metric U.S. Survey Foot

Horizontal Datum _____

Zone _____ Epoch Date _____

Vertical Datum _____

Complies with Public Resources Code §§8801-8819

Complies with Public Resources Code §§8890-8902

C.M. WEBER GRANT

PLS Act Ref.: 8765(d) 8771 8773 Other:

Corner/Monument: Left as found Established Rebuilt Pre-Construction

Found and tagged Reestablished Referenced Post-Construction

Narrative of corner identified and monument as found, set, reset, replaced, or removed:

See sheet #2 for description(s):



SURVEYOR'S STATEMENT

This Corner Record was prepared by me or under my direction in conformance with the Professional Land Surveyors' Act on September 2, 2020.

Signed Joe Murphy (P.L.S.) or R.C.E. No. L.S. 7269

COUNTY SURVEYOR'S STATEMENT

This Corner Record was received September 9, 2020

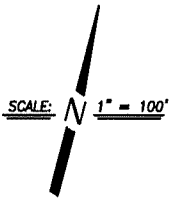
and examined and filed September 22, 2020.

Signed James E Hart P.L.S. or R.C.E. No. 8657

Title County Surveyor

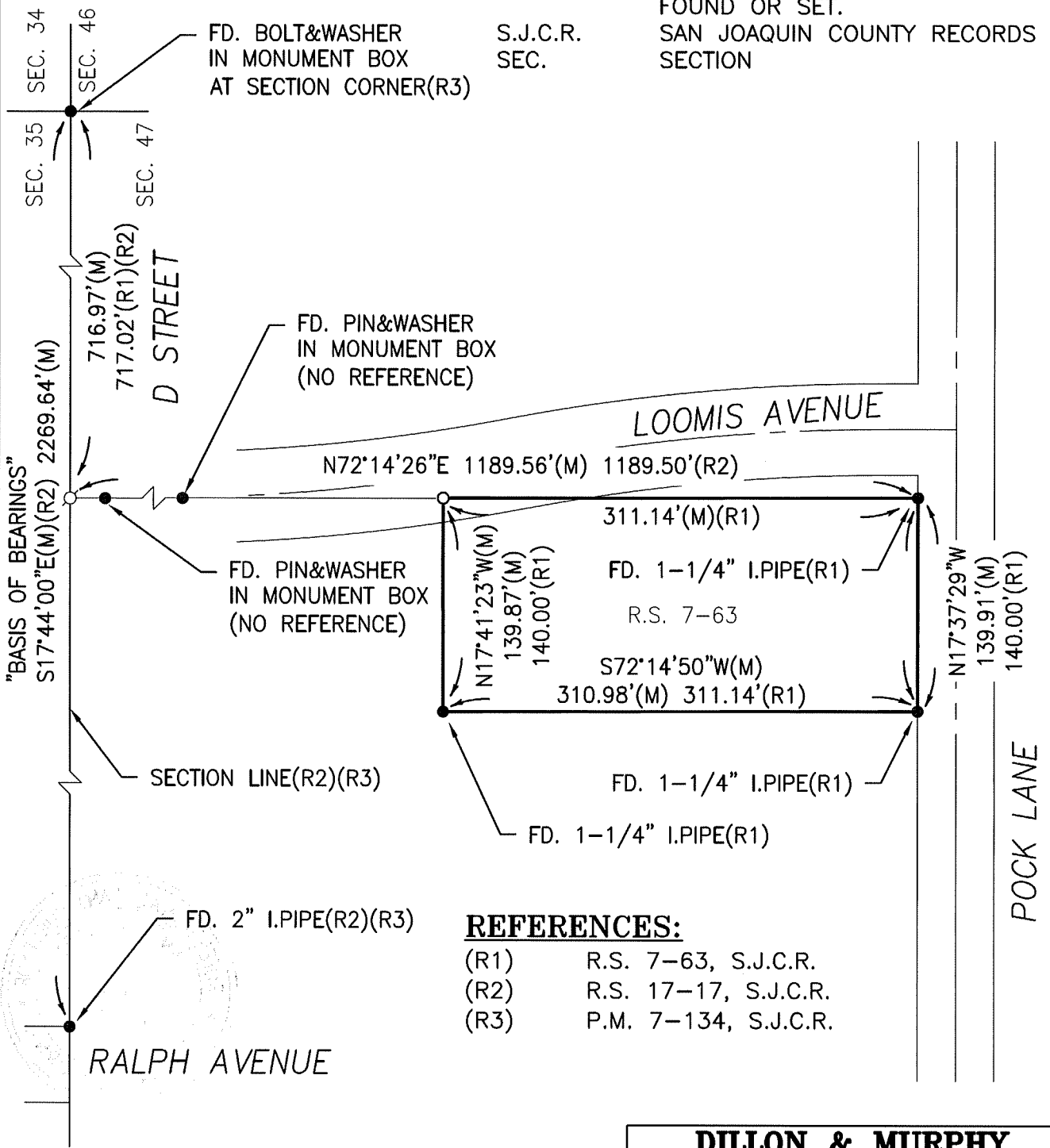
County Surveyor's Comment





LEGEND

- FD. FOUND
- I.P.I.P.E IRON PIPE
- SET 3/4" DIA. X 30" IRON ROD, CAPPED L.S. 7269
- FD. MONUMENT AS NOTED
- ∅ DIMENSION POINT, NOTHING FOUND OR SET.
- S.J.C.R. SAN JOAQUIN COUNTY RECORDS
- SEC. SECTION



REFERENCES:

- (R1) R.S. 7-63, S.J.C.R.
- (R2) R.S. 17-17, S.J.C.R.
- (R3) P.M. 7-134, S.J.C.R.

DILLON & MURPHY

CONSULTING CIVIL ENGINEERS
 ENGINEERING • PLANNING • SURVEYING
 847 N. CLUFF AVENUE, SUITE A2, LODI, CALIFORNIA 95240 (209) 334-8813