

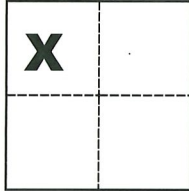
# CORNER RECORD

Agency Index CR-20-157  
Document Number \_\_\_\_\_

City of \_\_\_\_\_ County of San Joaquin, California  
Brief Legal Description N.W. cor. of Lot 132 and S.E. cor. of Lot 126 per M.&P. 27-83, S.J.C.R.

### CORNER TYPE

### COORDINATES (Optional)



Government Corner  Control   
Meander  Property   
Rancho  Other

N. \_\_\_\_\_ E. \_\_\_\_\_  
Elevation \_\_\_\_\_  
Units Metric  U.S. Survey Foot   
Horizontal Datum \_\_\_\_\_  
Zone \_\_\_\_\_ Epoch Date \_\_\_\_\_  
Vertical Datum \_\_\_\_\_

Date of Survey June 19, 2020

Sec. 34, T.4N., R.6E.,  
M.D.B. & M.

Complies with Public Resources Code §§8801-8819  
 Complies with Public Resources Code §§8890-8902

PLS Act Ref.:  8765(d)  8771  8773  Other:  
Corner/Monument:  Left as found  Established  Rebuilt  Pre-Construction  
 Found and tagged  Reestablished  Referenced  Post-Construction

Narrative of corner identified and monument as found, set, reset, replaced, or removed:  
 See sheet #2 for description(s):

### SURVEYOR'S STATEMENT

This Corner Record was prepared by me or under my direction in conformance with

the Professional Land Surveyors' Act on 8-19-2020

Signed Michael L. Quarataol P.L.S. or R.C.E. No. L.S. 4450



### COUNTY SURVEYOR'S STATEMENT

This Corner Record was received August 24, 2020

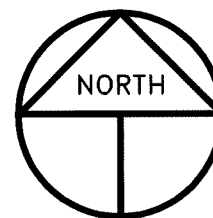
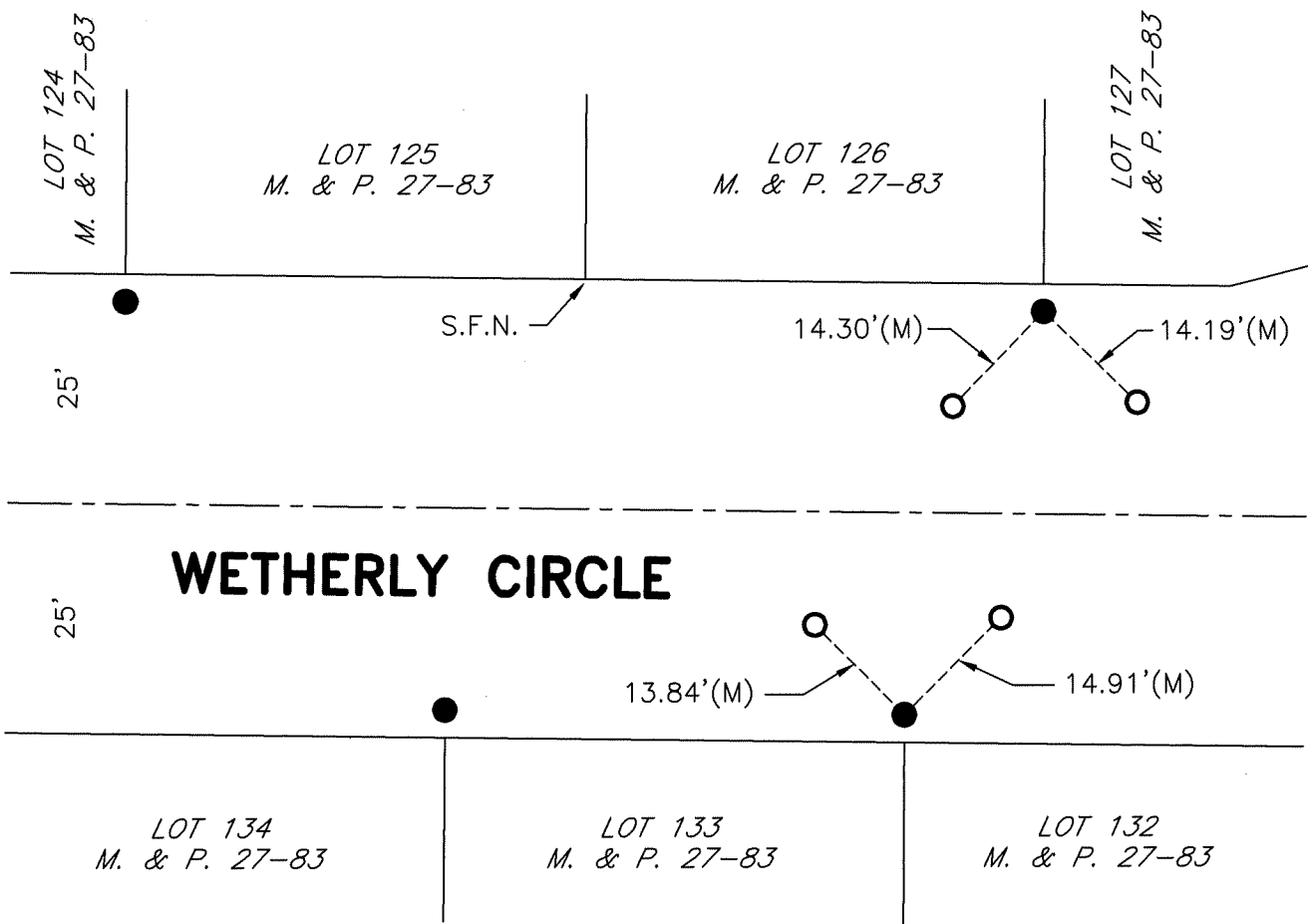
and examined and filed September 3, 2020

Signed James E. Hart P.L.S. or R.C.E. No. 8657

Title County Surveyor

County Surveyor's Comment





SCALE: 1" = 20'  
2020-161

## LEGEND

- INDICATES FOUND CHISELED CROSS, NO REFERENCE,
- INDICATES SET CONCRETE NAIL AND TAG STAMPED LS 4450
- M. & P. INDICATES MAPS AND PLATS, VOLUME AND PAGE, S.J.C.R.
- S.J.C.R. INDICATES SAN JOAQUIN COUNTY RECORDS
- (M) INDICATES MEASURED ON THIS SURVEY
- S.F.N. INDICATES SEARCHED FOUND NOTHING