

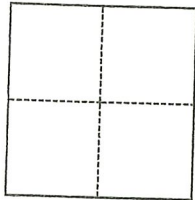
CORNER RECORD

Agency Index CR-20-156
Document Number _____

City of STOCKTON County of SAN JOAQUIN, California
Brief Legal Description REF. MON AT N.W. COR. BLK 43, PORTION SEC. 22, C.M. WEBER GRANT

CORNER TYPE

COORDINATES (Optional)



- Government Corner
- Meander
- Rancho
- Control
- Property
- Other

N. _____ E. _____

Elevation _____

Units Metric U.S. Survey Foot

Horizontal Datum _____

Zone _____ Epoch Date _____

Vertical Datum _____

Complies with Public Resources Code §§8801-8819

Complies with Public Resources Code §§8890-8902

Date of Survey July 27, 2020

- PLS Act Ref.: 8765(d) 8771 8773 Other: _____
- Corner/Monument: Left as found Established Rebuilt Pre-Construction
- Found and tagged Reestablished Referenced Post-Construction

Narrative of corner identified and monument as found, set, reset, replaced, or removed:
 See sheet #2 for description(s):

FD. CHISELED "X", OLD AND NEARLY FADED OUT, IN CONCRETE SIDEWALK AT THE SOUTHEAST CORNER OF SIXTH STREET AND SUTTER STREET. CONSTRUCTION IS PLANNED TO REPLACE THE CURB RETURN AND HANDICAP RAMP. SET TWO WITNESS CORNERS.

SURVEYOR'S STATEMENT

This Corner Record was prepared by me or under my direction in conformance with the Professional Land Surveyors' Act on 08/17/2020

Signed Walter John Shoup P.L.S. or R.C.E. No. 7736



COUNTY SURVEYOR'S STATEMENT

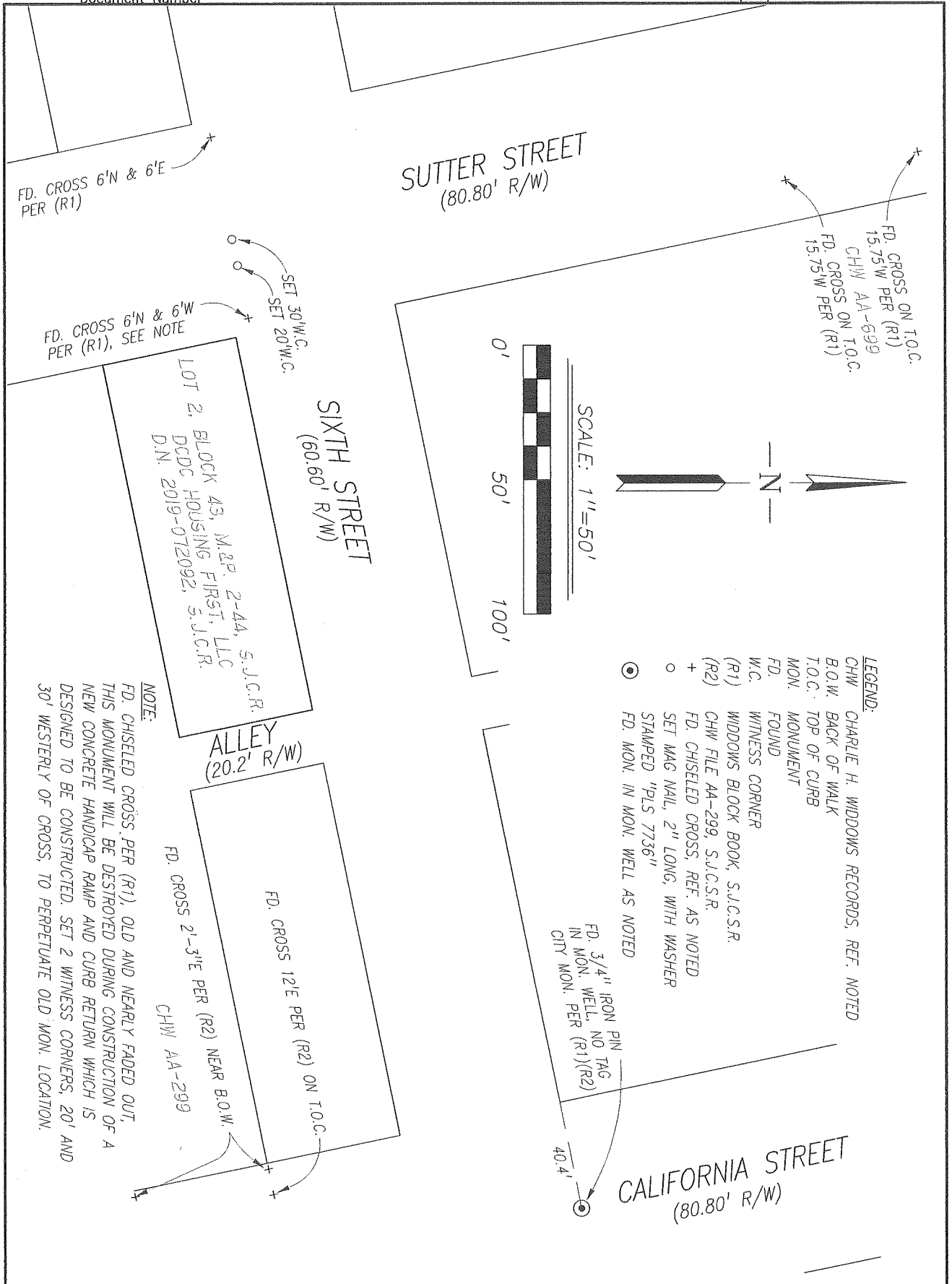
This Corner Record was received August 18, 2020 and examined and filed September 3, 2020

Signed James E. Hart P.L.S. or R.C.E. No. 8657

Title County Surveyor

County Surveyor's Comment _____





Scale: 1"=50'	CORNER RECORD EXHIBIT MAP	Date: 08/17/2020
Job No.: 20-095		DWG: 20095CR-PRECONST