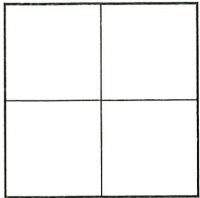


CORNER RECORD

Agency Index CR-20-153

Document Number _____

City of STOCKTONCounty of SAN JOAQUIN, CaliforniaBrief Legal Description VENETIAN BRIDGES, UNIT NO. 2, VOLUME 24 OF MAPS & PLATS, PAGE 72.**CORNER TYPE**

Government Corner Control
 Meander Property
 Rancho Other

COORDINATES (Optional)

N. _____ E. _____

 Elevation _____ Units Metric U.S. Survey Foot Horizontal Datum NAD83Zone III Epoch Date 1991.35Vertical Datum NAVD88Date of Survey MARCH 24, 2020 Complies with Public Resources Code §§8801-8819 Complies with Public Resources Code §§8890-8902PLS Act Ref: 8765(d) 8771 8773 Other:

Corner/Monument: Left as found Established Rebuilt Pre-Construction
 Found and tagged Reestablished Referenced Post-Construction

Narrative of corner identified and monument as found, set, reset, replaced, or removed:

 See sheet #2 for description (s):**SURVEYOR'S STATEMENT**

This Corner Record was prepared by me or under my direction in conformance with the Professional Land Surveyors' Act on 08/06/2020

Signed *Randell Scott West* P.L.S. or R.C.E. No. 8663**COUNTY SURVEYOR'S STATEMENT**This Corner Record was received August 11, 2020and examined and filed August 27, 2020Signed *James E. Hart* P.L.S. or R.C.E. No. 8657Title County Surveyor

County Surveyor's Comment _____

STATEMENT OF PURPOSE:

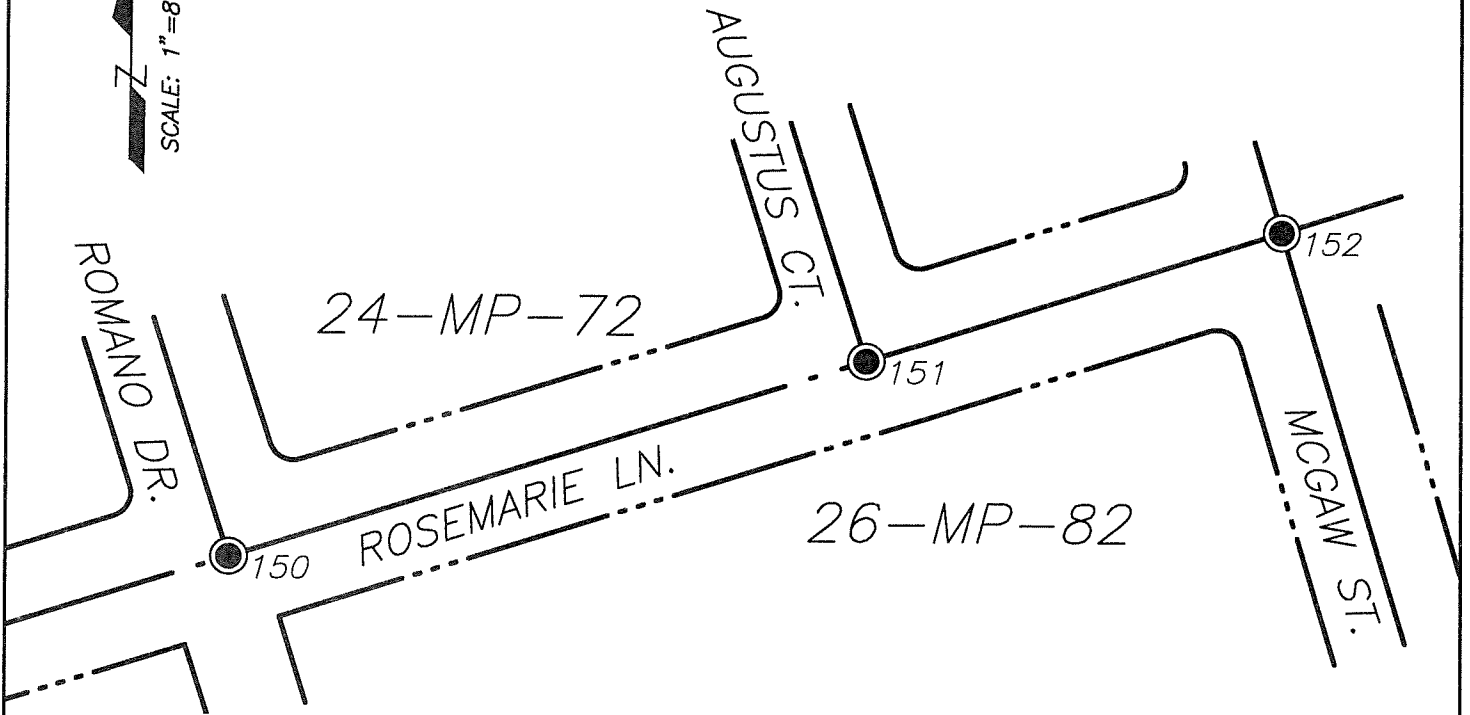
THE PURPOSE OF THIS SURVEY IS TO IDENTIFY AND RECORD THE LOCATION OF EXISTING MONUMENTS PRIOR TO THE CONSTRUCTION OF PG&E FACILITIES AROUND THE MONUMENTS. THE PURPOSE OF THIS SURVEY IS NOT TO MAKE PROPERTY LINE DETERMINATIONS. LOT LINES SHOWN HEREON ARE FOR GENERAL LOCATION AND INFORMATIONAL PURPOSES ONLY.

DATUM STATEMENT:

COORDINATES SHOWN HEREON ARE GRID AND ARE BASED ON CITY OF STOCKTON MONUMENTS 7N-14 AND 7N-16, CALIFORNIA COORDINATE SYSTEM (CCS83), ZONE III, 1983 NAD, (1991.35 EPOCH ADJUSTMENT OF THE HIGH PRECISION GEODETIC NETWORK) AS SHOWN ON RECORD OF SURVEY BOOK 33 OF SURVEYS, PAGE 20. THE PROJECT SPECIFIC COMBINED SCALE FACTOR IS 0.99994060.

LEGEND:

● INDICATES FOUND 3/4" IRON PIN IN MONUMENT WELL, NO TAG, PER TRACT NO. 1523, AS SHOWN IN BOOK OF MAPS AND PLATS, VOLUME 24, PAGE 72, RECORDS OF SAN JOAQUIN COUNTY



GRID COORDINATES (U.S. SURVEY FEET)		
POINT	NORTHING	EASTING
150	2181951.62'	6322520.76'
151	2182034.68'	6322783.04'
152	2182083.13'	6322956.44'