

# CORNER RECORD

Agency Index CR-20-149  
Document Number \_\_\_\_\_

City of STOCKTON

County of SAN JOAQUIN, California

Brief Legal Description VENETIAN BRIDGES, UNIT NO. 1, VOLUME 23 OF MAPS & PLATS, PAGE 50.



### CORNER TYPE

Government Corner  Control  
Meander  Property  
Rancho  Other

### COORDINATES (Optional)

N. \_\_\_\_\_ E. \_\_\_\_\_  
 Elevation \_\_\_\_\_  
 Units Metric  U.S. Survey Foot   
 Horizontal Datum NAD83  
Zone III Epoch Date 1991.35  
Vertical Datum NAVD88  
 Complies with Public Resources Code §§8801-8819  
 Complies with Public Resources Code §§8890-8902

T. 2N., R. 6E., M.D.B.&M. Date of Survey MARCH 24, 2020

PLS Act Ref:  8765(d)  8771  8773  Other: \_\_\_\_\_  
Corner/Monument:  Left as found  Established  Rebuilt  Pre-Construction  
 Found and tagged  Reestablished  Referenced  Post-Construction

Narrative of corner identified and monument as found, set, reset, replaced, or removed:  
 See sheet #2 for description (s):

### SURVEYOR'S STATEMENT

This Corner Record was prepared by me or under my direction in conformance with the Professional Land Surveyors' Act on 08/06/2020  
Signed *Randell Scott West* P.L.S. or R.C.E. No. 8663



### COUNTY SURVEYOR'S STATEMENT

This Corner Record was received August 11, 2020  
and examined and filed August 27, 2020  
Signed *James E. Hart* P.L.S. or R.C.E. No. 8657  
Title County Surveyor



County Surveyor's Comment \_\_\_\_\_  
\_\_\_\_\_  
\_\_\_\_\_

**STATEMENT OF PURPOSE:**

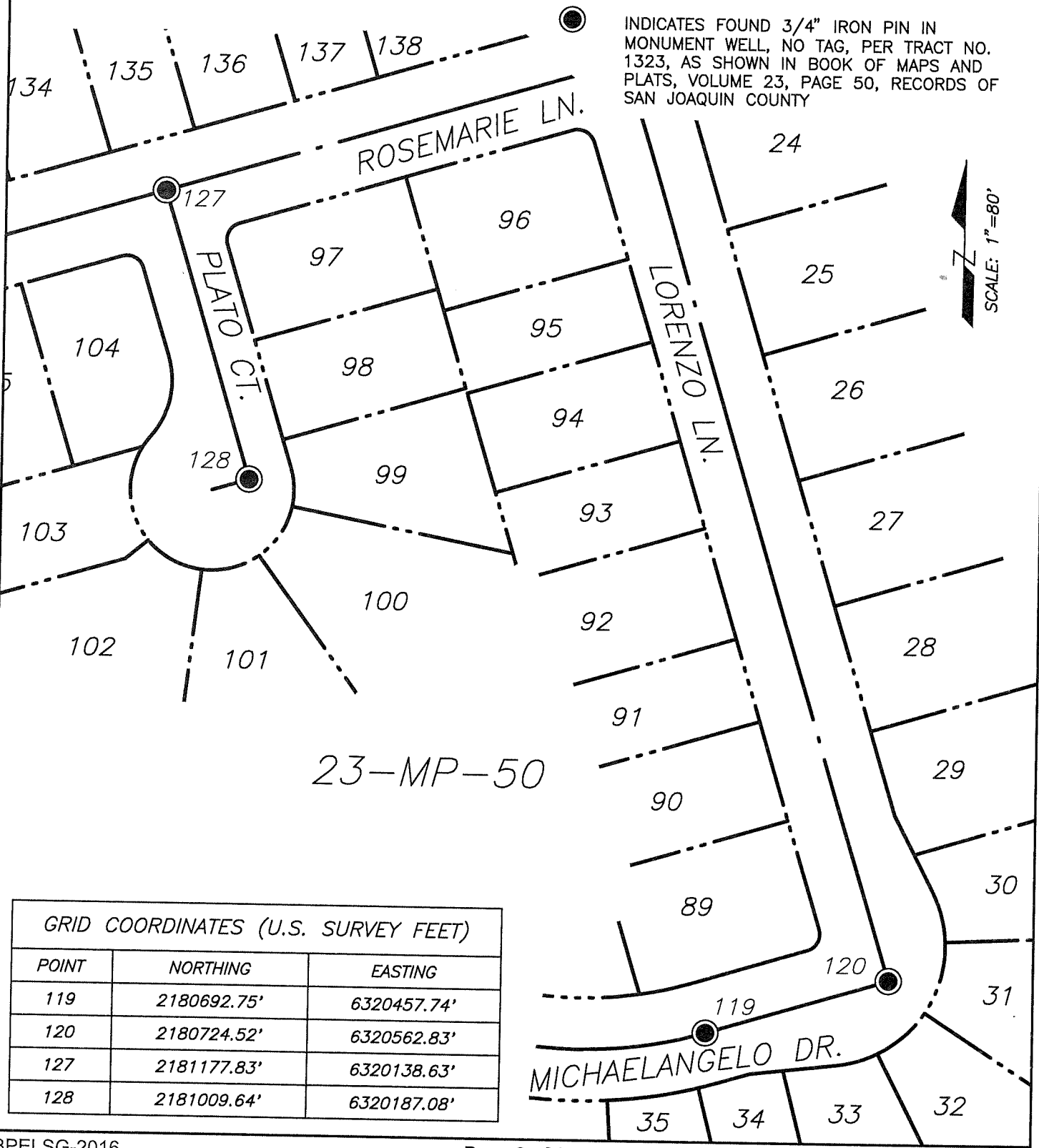
THE PURPOSE OF THIS SURVEY IS TO IDENTIFY AND RECORD THE LOCATION OF EXISTING MONUMENTS PRIOR TO THE CONSTRUCTION OF PG&E FACILITIES AROUND THE MONUMENTS. THE PURPOSE OF THIS SURVEY IS NOT TO MAKE PROPERTY LINE DETERMINATIONS. LOT LINES SHOWN HEREON ARE FOR GENERAL LOCATION AND INFORMATIONAL PURPOSES ONLY.

**DATUM STATEMENT:**

COORDINATES SHOWN HEREON ARE GRID AND ARE BASED ON CITY OF STOCKTON MONUMENTS 7N-14 AND 7N-16, CALIFORNIA COORDINATE SYSTEM (CCS83), ZONE III, 1983 NAD, (1991.35 EPOCH ADJUSTMENT OF THE HIGH PRECISION GEODETIC NETWORK) AS SHOWN ON RECORD OF SURVEY BOOK 33 OF SURVEYS, PAGE 20. THE PROJECT SPECIFIC COMBINED SCALE FACTOR IS 0.99994060.

**LEGEND:**

● INDICATES FOUND 3/4" IRON PIN IN MONUMENT WELL, NO TAG, PER TRACT NO. 1323, AS SHOWN IN BOOK OF MAPS AND PLATS, VOLUME 23, PAGE 50, RECORDS OF SAN JOAQUIN COUNTY



GRID COORDINATES (U.S. SURVEY FEET)		
POINT	NORTHING	EASTING
119	2180692.75'	6320457.74'
120	2180724.52'	6320562.83'
127	2181177.83'	6320138.63'
128	2181009.64'	6320187.08'