

# CORNER RECORD

Agency Index CR-20-147  
Document Number \_\_\_\_\_

City of STOCKTON County of SAN JOAQUIN, California

Brief Legal Description VENETIAN BRIDGES, UNIT NO. 1, VOLUME 23 OF MAPS & PLATS, PAGE 50.



### CORNER TYPE

- Government Corner  Control
- Meander  Property
- Rancho  Other

### COORDINATES (Optional)

- N. \_\_\_\_\_ E. \_\_\_\_\_
- Elevation \_\_\_\_\_
- Units Metric  U.S. Survey Foot
- Horizontal Datum NAD83
- Zone III Epoch Date 1991.35
- Vertical Datum NAVD88

T. 2N., R. 6E., M.D.B.&M. Date of Survey MARCH 24, 2020

- Complies with Public Resources Code §§8801-8819
- Complies with Public Resources Code §§8890-8902

PLS Act Ref:  8765(d)  8771  8773  Other: \_\_\_\_\_

Corner/Monument:  Left as found  Established  Rebuilt  Pre-Construction  
 Found and tagged  Reestablished  Referenced  Post-Construction

Narrative of corner identified and monument as found, set, reset, replaced, or removed:  
 See sheet #2 for description (s):

### SURVEYOR'S STATEMENT

This Corner Record was prepared by me or under my direction in conformance with the Professional Land Surveyors' Act on 08/06/2020

Signed *Randell Scott West* P.L.S. or R.C.E. No. 8663



### COUNTY SURVEYOR'S STATEMENT

This Corner Record was received August 11, 2020

and examined and filed August 27, 2020

Signed *James E Hart* P.L.S. or R.C.E. No. 8657

Title County Surveyor



County Surveyor's Comment \_\_\_\_\_  
\_\_\_\_\_  
\_\_\_\_\_

**STATEMENT OF PURPOSE:**

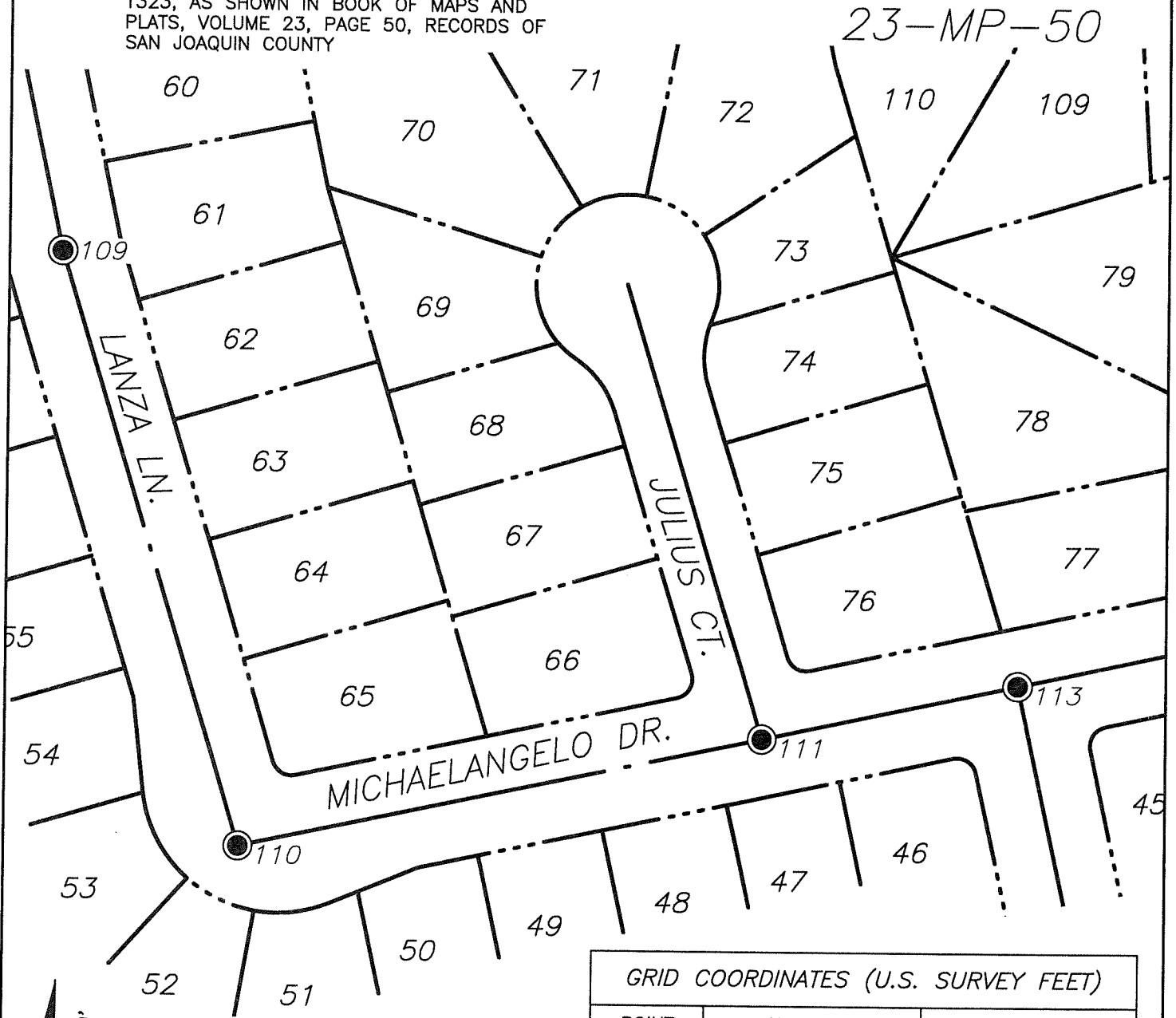
THE PURPOSE OF THIS SURVEY IS TO IDENTIFY AND RECORD THE LOCATION OF EXISTING MONUMENTS PRIOR TO THE CONSTRUCTION OF PG&E FACILITIES AROUND THE MONUMENTS. THE PURPOSE OF THIS SURVEY IS NOT TO MAKE PROPERTY LINE DETERMINATIONS. LOT LINES SHOWN HEREON ARE FOR GENERAL LOCATION AND INFORMATIONAL PURPOSES ONLY.

**DATUM STATEMENT:**

COORDINATES SHOWN HEREON ARE GRID AND ARE BASED ON CITY OF STOCKTON MONUMENTS 7N-14 AND 7N-16, CALIFORNIA COORDINATE SYSTEM (CCS83), ZONE III, 1983 NAD, (1991.35 EPOCH ADJUSTMENT OF THE HIGH PRECISION GEODETIC NETWORK) AS SHOWN ON RECORD OF SURVEY BOOK 33 OF SURVEYS, PAGE 20. THE PROJECT SPECIFIC COMBINED SCALE FACTOR IS 0.99994060.

**LEGEND:**

● INDICATES FOUND 3/4" IRON PIN IN MONUMENT WELL, NO TAG, PER TRACT NO. 1323, AS SHOWN IN BOOK OF MAPS AND PLATS, VOLUME 23, PAGE 50, RECORDS OF SAN JOAQUIN COUNTY



GRID COORDINATES (U.S. SURVEY FEET)		
POINT	NORTHING	EASTING
109	2180895.69'	6319267.51'
110	2180586.01'	6319361.24'
111	2180644.84'	6319630.87'
113	2180673.78'	6319763.15'