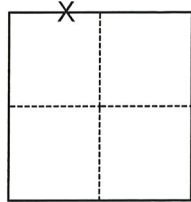


# CORNER RECORD

Agency Index CR-20-134  
 Document Number \_\_\_\_\_

City of \_\_\_\_\_ County of San Joaquin, California  
 Brief Legal Description Centerline monuments at Harney Ln. & Extension Rd.(R.S. 35-2 & M&P 11-135)



- CORNER TYPE**
- Government Corner     Control  
 Meander                       Property  
 Rancho                             Other

Date of Survey June 18, 2020

Section 22, T.3N.,R.6E.  
 M.D.B.&M.

- COORDINATES (Optional)**
- N. \_\_\_\_\_ E. \_\_\_\_\_  
 Elevation \_\_\_\_\_  
 Units  Metric  U.S. Survey Foot  
 Horizontal Datum \_\_\_\_\_  
 Zone \_\_\_\_\_ Epoch Date \_\_\_\_\_  
 Vertical Datum \_\_\_\_\_  
 Complies with Public Resources Code §§8801-8819  
 Complies with Public Resources Code §§8890-8902

- PLS Act Ref.:  8765(d)     8771     8773     Other:
- Corner/Monument:  Left as found     Established     Rebuilt     Pre-Construction  
 Found and tagged     Reestablished     Referenced     Post-Construction

Narrative of corner identified and monument as found, set, reset, replaced, or removed:  
 See sheet #2 for description(s):

## SURVEYOR'S STATEMENT

This Corner Record was prepared by me or under my direction in conformance with  
 the Professional Land Surveyors' Act on July 23, 2020

Signed *Jimi A. Billigmeier* P.L.S. or R.C.E. No. P.L.S. 9478



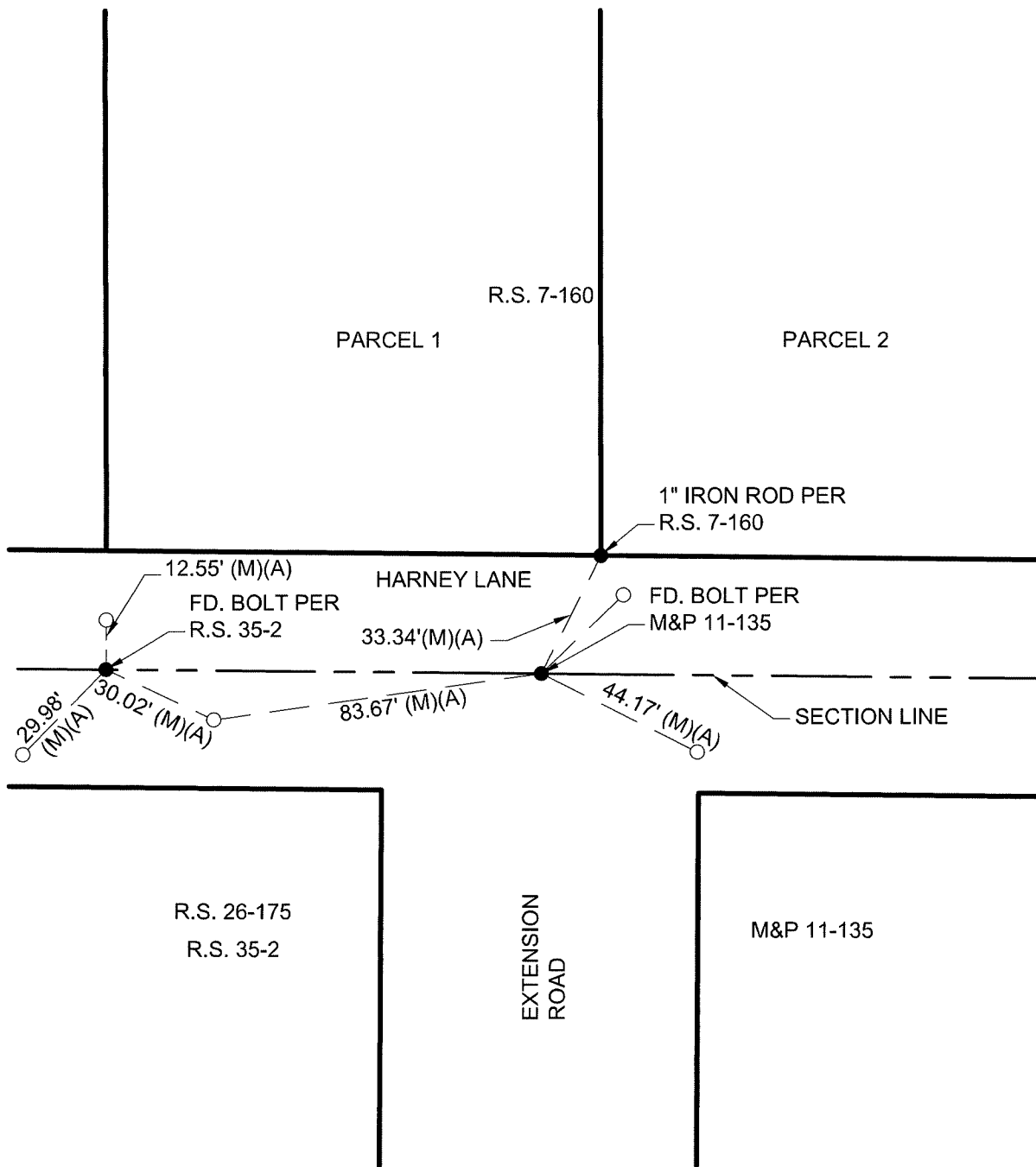
## COUNTY SURVEYOR'S STATEMENT

This Corner Record was received July 27, 2020  
 and examined and filed August 18, 2020

Signed *James E. Hart* P.L.S. or R.C.E. No. 8657  
 Title County Surveyor

County Surveyor's Comment



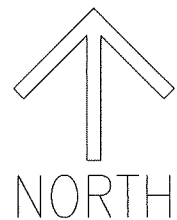


**LEGEND**

- FOUND MONUMENT, AS NOTED PER (A)
- FOUND MAG NAIL W/ TAG STAMPED "CITY OF LODI PLS #9478" PER (A)
- FD. FOUND ON THIS SURVEY
- R.S. RECORD OF SURVEY, BOOK AND PAGE, S.J.C.R.
- M&P MAPS & PLATS, VOLUME AND PAGE, S.J.C.R.
- S.J.C.R. SAN JOAQUIN COUNTY RECORDS
- S.J.C.S.R. SAN JOAQUIN COUNTY COUNTY SURVEYOR'S RECORDS
- (M) MEASURED ON THIS SURVEY

**REFERENCE**

- (A) CORNER RECORD 20-26, S.J.C.S.R.



SCALE: 1"=40'  
019D009