

# CORNER RECORD

Agency Index CR-20-129

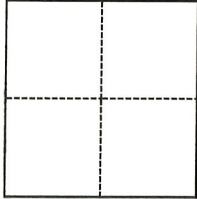
Document Number \_\_\_\_\_

City of STOCKTON County of SAN JOAQUIN, California

Brief Legal Description SOUTHERN PORTION OF HATCHERS CIRCLE PER M&P 22-5, SEC. 19, T. 2 N., R. 6 E., M. D. B. & M.

### CORNER TYPE

### COORDINATES (Optional)



- Government Corner
- Meander
- Rancho
- Control
- Property
- Other

Date of Survey June 2, 2020

N. \_\_\_\_\_ E. \_\_\_\_\_

Elevation \_\_\_\_\_

Units  Metric  U.S. Survey Foot

Horizontal Datum \_\_\_\_\_

Zone \_\_\_\_\_ Epoch Date \_\_\_\_\_

Vertical Datum \_\_\_\_\_

Complies with Public Resources Code §§8801-8819

Complies with Public Resources Code §§8890-8902

PLS Act Ref.:  8765(d)  8771  8773  Other:

Corner/Monument:  Left as found  Established  Rebuilt  Pre-Construction

Found and tagged  Reestablished  Referenced  Post-Construction

Narrative of corner identified and monument as found, set, reset, replaced, or removed:

See sheet #2 for description(s):

PRE-CONSTRUCTION CORNER RECORD. THIS DOCUMENT IS FOR THE PURPOSE OF PRESERVING AND ESTABLISHING TIES TO EXISTING MONUMENTS IN THE AREA OF NEW CONSTRUCTION OF IMPROVEMENTS, AS SHOWN ON BOOK 22 OF MAPS & PLATS, PAGE 5, SAN JOAQUIN COUNTY RECORDS.

### SURVEYOR'S STATEMENT

This Corner Record was prepared by me or under my direction in conformance with

the Professional Land Surveyors' Act on July 2, 2020

Signed J.C.W. P.L.S. or R.C.E. No. LS 7600



### COUNTY SURVEYOR'S STATEMENT

This Corner Record was received July 2, 2020

and examined and filed July 16, 2020

Signed James E. Hart P.L.S. or R.C.E. No. 8657

Title County Surveyor

County Surveyor's Comment



**LEGEND:**

M&P MAPS & PLATS, BOOK-PAGE  
 FOUND 3/4" IRON PIN IN  
 MONUMENT BOX (A)

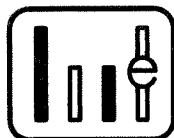
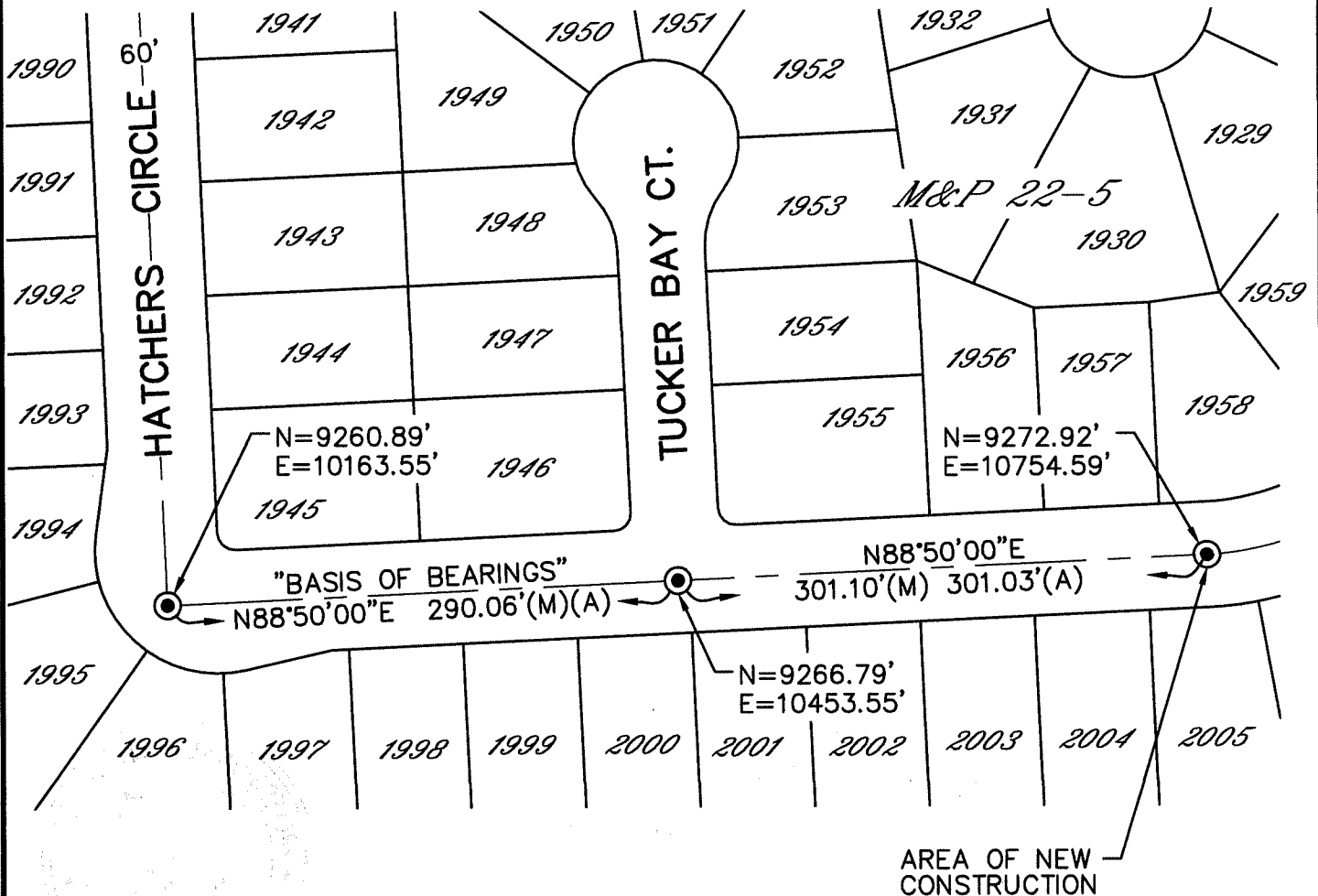
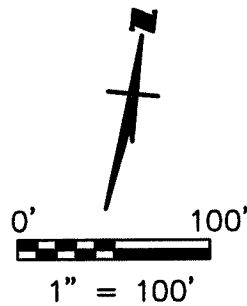


**DESCRIPTION:**

THIS DOCUMENT IS FOR THE  
 PURPOSE OF PRESERVING  
 AND ESTABLISHING TIES TO  
 EXISTING MONUMENTS.

**NOTE:**

ALL BEARINGS AND  
 DISTANCES SHOWN ARE  
 REFERENCE ONLY.



**WONG ENGINEERS, INC.**  
 PLANNING ENGINEERING SURVEYING  
 4578 FEATHER RIVER DRIVE, SUITE A  
 STOCKTON, CALIFORNIA (209)476-0011  
 JULY 1, 2020 PAGE 2 OF 2

**REFERENCE:**  
 (A) M&P 22-5