

# CORNER RECORD

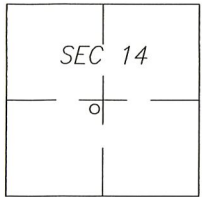
Agency Index CR-20-126

Document Number \_\_\_\_\_

City of UNINCORPORATED AREA

County of SAN JOAQUIN, California

Brief Legal Description MONUMENTS AT NORTHEAST CORNER OF PARCEL B, 9-PM-125, S.J.C.R.



T1S/R6E

### CORNER TYPE

- Government Corner  Control
- Meander  Property
- Rancho  Other

Date of Survey May 20, 2020

### COORDINATES (Optional)

- N. \_\_\_\_\_ E. \_\_\_\_\_
- Elevation \_\_\_\_\_
- Units Metric  U.S. Survey Foot
- Horizontal Datum \_\_\_\_\_
- Zone \_\_\_\_\_ Epoch Date \_\_\_\_\_
- Vertical Datum: \_\_\_\_\_
- Complies with Public Resources Code §§8801-8819
- Complies with Public Resources Code §§8890-8902

PLS Act Ref.:  8765(d)  8771  8773

Other: \_\_\_\_\_

Corner/Monument:  Left as found  Established  Rebuilt  Pre-Construction

Found and tagged  Reestablished  Referenced  Post-Construction

Narrative of corner identified and monument as found and set or reset:

See sheet #2 for description(s):

### SURVEYOR'S STATEMENT

This Corner Record was prepared by me or under my direction in conformance with the Professional Land Surveyor's Act on 18 JUNE, 2020

Signed [Signature] P.L.S. or R.C.E. No.: 8040



### COUNTY SURVEYOR'S STATEMENT

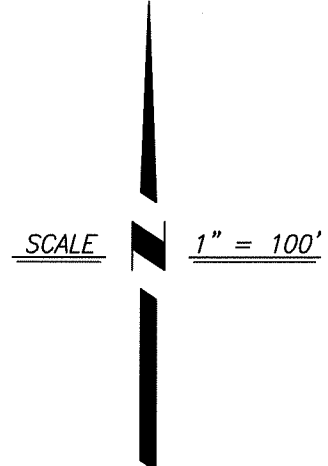
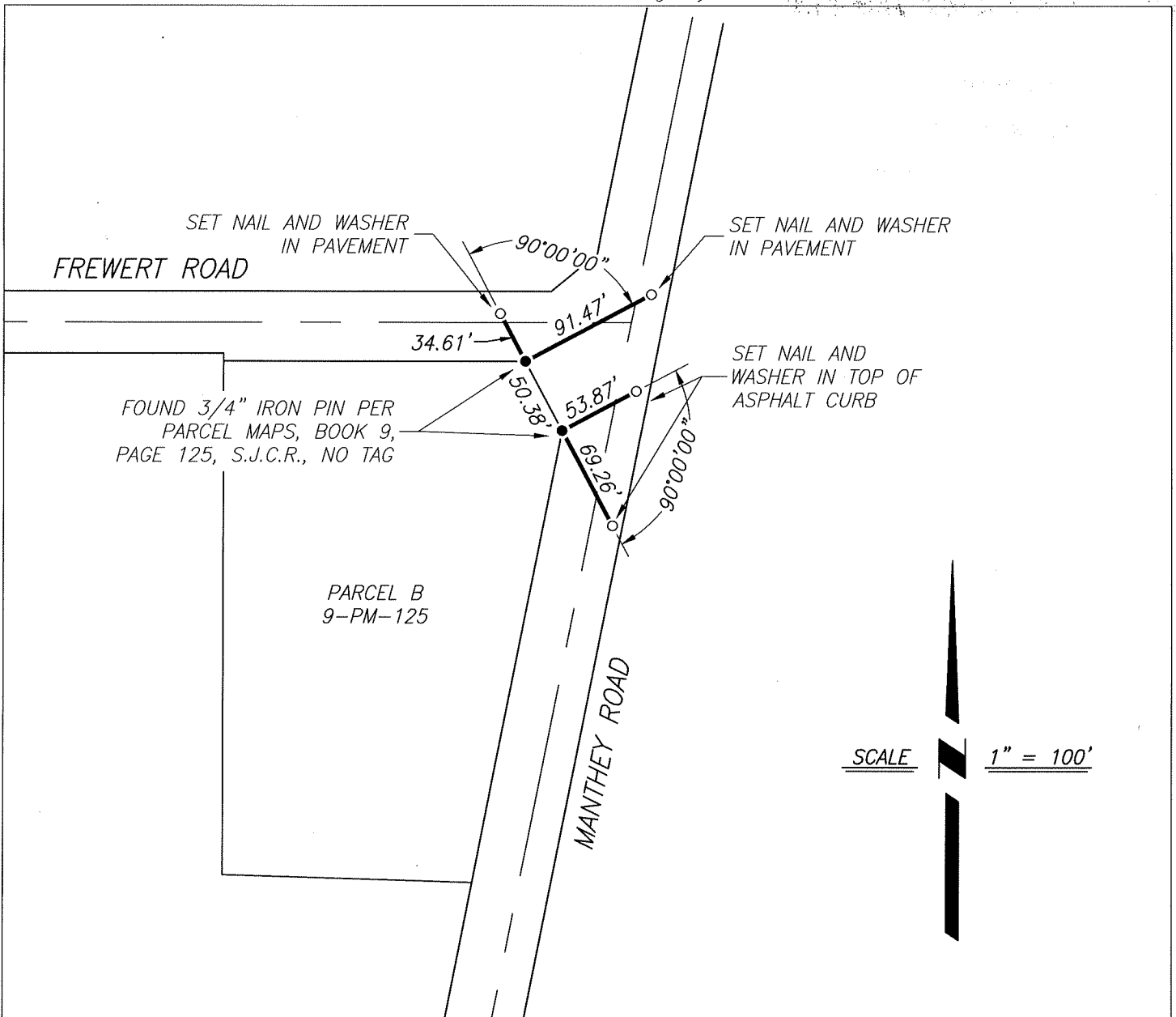
This Corner Record was received July 2, 2020 and examined and filed July 16, 2020

Signed James E Hart P.L.S. or R.C.E. No.: 8657

Title County Surveyor

County Surveyor's Comment





LEGEND:

- FOUND MONUMENT AS NOTED
- SET REFERENCE POINT AS NOTED
- S.J.C.R. SAN JOAQUIN COUNTY RECORDS
- PM PARCEL MAP