

# CORNER RECORD

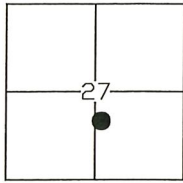
Agency Index: CR-20-125

Document Number: \_\_\_\_\_

City of STOCKTON

County of SAN JOAQUIN, California

Brief Legal Description MONUMENTS AT THE INTERSECTION OF E.W.S. WOODS BLVD AND BOARDWALK DRIVE



T.1N, R.6E

### CORNER TYPE

- Government Corner
- Meander
- Rancho
- Control
- Property
- Other

Date of Survey 04-13-2020

### COORDINATES (Optional)

- N. \_\_\_\_\_ E. \_\_\_\_\_
- Elevation \_\_\_\_\_
- Units  Metric  U.S. Survey Foot
- Horizontal Datum \_\_\_\_\_
- Zone \_\_\_\_\_ Epoch Date \_\_\_\_\_
- Vertical Datum \_\_\_\_\_
- Complies with Public Resources Code SS8801-8819
- Complies with Public Resources Code SS8890-8902

PLS Act Ref:  8765(d)  8771  8773  Other: \_\_\_\_\_

Corner/ Monument:  Left as found  Established  Rebuilt  Pre-Construction

Found and Tagged  Reestablished  Referenced  Post-Construction

Narrative of corner identified and monument as found, set, reset, replaced, or removed:

See sheet #2 for description(s):

FOUND THREE (3) 3/4" IRON PIPES TAGGED "L.S. 4876", AND ONE (1) 3/4" IRON PIPE TAGGED "L.S. 4876"  
IN A MONUMENT WELL, ALL AS SHOWN ON MAP RECORDED IN VOLUME 34 OF MAPS AND PLATS AT PAGE 43,  
S.J.C.R. SET THREE (3) CONCRETE NAILS WITH BRASS TAGS "L.S. 6953" AS WITNESS CORNERS, ALL AS  
SHOWN ON PAGE 2.

### SURVEYOR'S STATEMENT

This Corner Record was prepared by me or under my direction in conformance with  
 the Land Surveyors' Act on APRIL 15, 2020,

Signed [Signature] P.L.S. or R.C.E. Number 6953



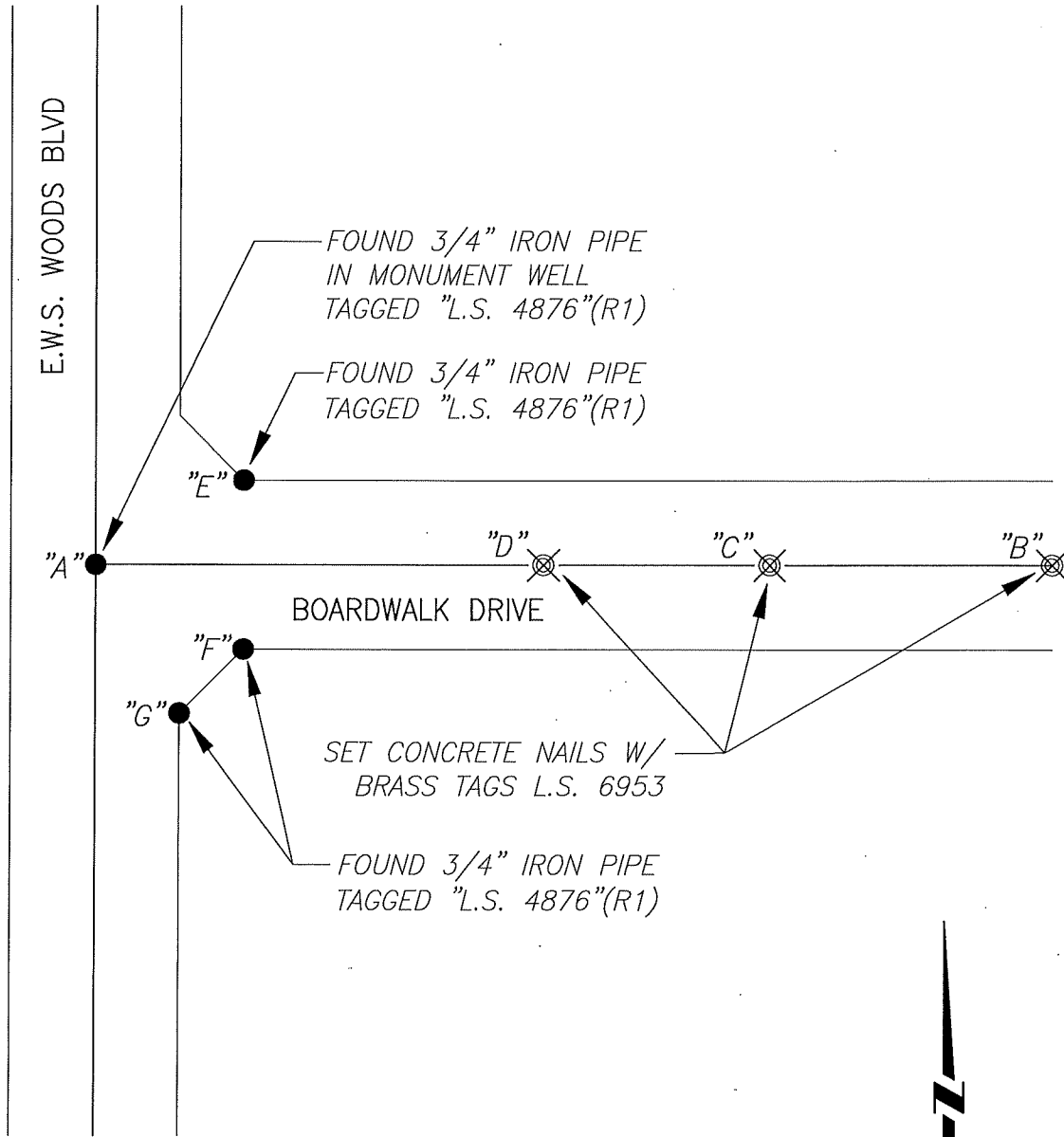
### COUNTY SURVEYOR'S STATEMENT

This Corner Record was received June 25, 2020  
 and examined and filed July 9, 2020

Signed [Signature] P.L.S. or R.C.E. No: 8657  
 Title County Surveyor



County Surveyor's Comment \_\_\_\_\_



**REFERENCE:**

(R1) 34-M&P-43, S.J.C.R.

NOT TO SCALE

**LEGEND:**

- ⊗ SET MONUMENT AS NOTED.
- FOUND MONUMENT AS NOTED.
- M&P- MAPS AND PLATS
- S.J.C.R. SAN JOAQUIN COUNTY RECORDS
- (M) MEASURED DISTANCE. ALL DISTANCES ARE MEASURED UNLESS NOTED OTHERWISE.

X AND DISTANCE TABLE		
BS-@-FS	X	FS DISTANCE
B-A-B	00°00'00"	401.25'(M)
B-A-C	00°00'00"	282.45'(M)
B-A-D	00°00'00"	188.30'(M)
B-A-E	335°02'54"	59.12'(M)
B-A-F	23°26'32"	62.91'(M)
B-A-G	52°12'46"	61.41'(M)