

CORNER RECORD

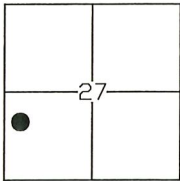
Agency Index: CR-20-124

Document Number: _____

City of STOCKTON

County of SAN JOAQUIN, California

Brief Legal Description MONUMENTS ALONG CENTERLINE OF SACCHETTI CIRCLE



T.1N, R.6E

CORNER TYPE

- Government Corner Control
 Meander Property
 Rancho Other

Date of Survey 04-13-2020

COORDINATES (Optional)

N. _____ E. _____

Elevation _____

Units Metric U.S. Survey Foot

Horizontal Datum _____

Zone _____ Epoch Date _____

Vertical Datum _____

Complies with Public Resources Code SS8801-8819

Complies with Public Resources Code SS8890-8902

PLS Act Ref: 8765(d) 8771 8773 Other:

Corner/ Monument: Left as found Established Rebuilt Pre-Construction
 Found and Tagged Reestablished Referenced Post-Construction

Narrative of corner identified and monument as found, set, reset, replaced, or removed:

See sheet #2 for description(s):

FOUND ONE (1) 3/4" IRON PIPE TAGGED "L.S. 4876" IN MONUMENT WELL, AND TWO (2) 3/4" IRON PIPES TAGGED "R.C.E. 29547" IN MONUMENT WELLS, ALL AS SHOWN ON MAP RECORDED IN VOLUME 31 OF MAPS AND PLATS AT PAGE 82, S.J.C.R. ALSO FOUND ONE (1) CUT "X" IN THE SIDEWALK SOUTHWESTERLY OF THE INTERSECTION OF WILLIAM MOSS BLVD AND SACCHETTI CIRCLE, ORIGIN UNKNOWN. SET TWO (2) CONCRETE NAILS WITH BRASS TAGS "L.S. 6953" AS WITNESS CORNERS, ALL AS SHOWN ON PAGE 2.

SURVEYOR'S STATEMENT

This Corner Record was prepared by me or under my direction in conformance with the Land Surveyors' Act on APRIL 15, 2020,

Signed [Signature] P.L.S. or R.C.E. Number 6953



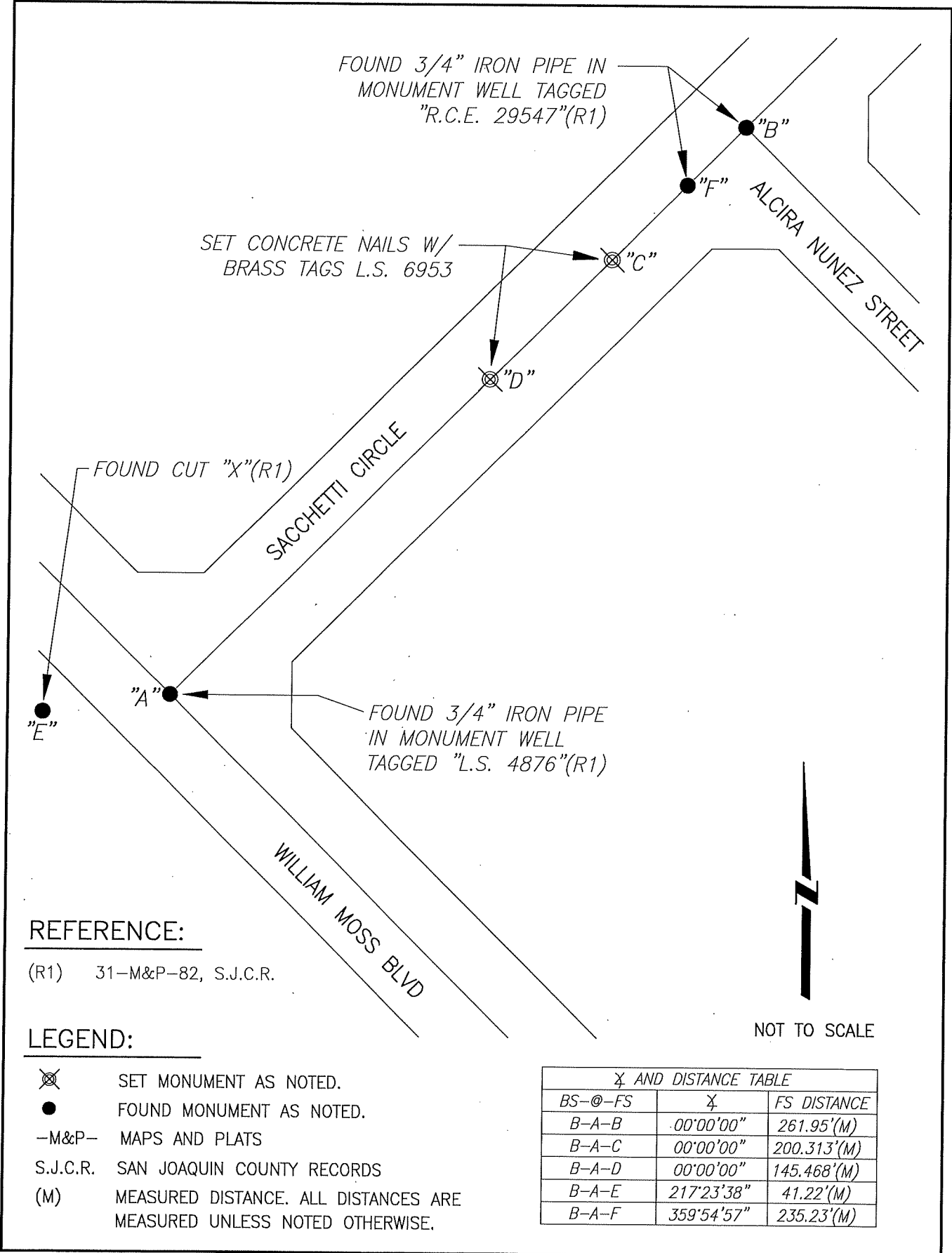
COUNTY SURVEYOR'S STATEMENT

This Corner Record was received June 25, 2020 and examined and filed July 9, 2020.

Signed James E. Hart P.L.S. or R.C.E. No: 8657
 Title County Surveyor



County Surveyor's Comment _____



REFERENCE:

(R1) 31-M&P-82, S.J.C.R.

LEGEND:

- ⊗ SET MONUMENT AS NOTED.
- FOUND MONUMENT AS NOTED.
- M&P- MAPS AND PLATS
- S.J.C.R. SAN JOAQUIN COUNTY RECORDS
- (M) MEASURED DISTANCE. ALL DISTANCES ARE MEASURED UNLESS NOTED OTHERWISE.



NOT TO SCALE

X AND DISTANCE TABLE		
BS-@-FS	X	FS DISTANCE
B-A-B	00°00'00"	261.95'(M)
B-A-C	00°00'00"	200.313'(M)
B-A-D	00°00'00"	145.468'(M)
B-A-E	217°23'38"	41.22'(M)
B-A-F	359°54'57"	235.23'(M)