

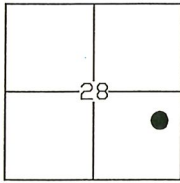
CORNER RECORD

Agency Index: CR-20-123

Document Number: _____

City of STOCKTON County of SAN JOAQUIN, California

Brief Legal Description MONUMENTS ALONG CENTERLINE OF HENRY LONG BLVD



T.1N, R.6E

CORNER TYPE

- Government Corner Control
 Meander Property
 Rancho Other

Date of Survey 04-13-2020

COORDINATES (Optional)

- N. _____ E. _____
 Elevation _____
 Units Metric U.S. Survey Foot
 Horizontal Datum _____
 Zone _____ Epoch Date _____
 Vertical Datum _____
 Complies with Public Resources Code SS8801-8819
 Complies with Public Resources Code SS8890-8902

PLS Act Ref: 8765(d) 8771 8773 Other:

Corner/ Left as found Established Rebuilt Pre-Construction
 Monument: Found and Tagged Reestablished Referenced Post-Construction

Narrative of corner identified and monument as found, set, reset, replaced, or removed:

See sheet #2 for description(s):

FOUND ONE (1) 3/4" IRON PIPE TAGGED "L.S. 4876" IN MONUMENT WELL AS SHOWN ON MAP RECORDED
IN VOLUME 22 OF PARCEL MAPS AT PAGE 2, S.J.C.R., AND ONE (1) 3/4" IRON PIPE TAGGED "L.S. 4876"
IN MONUMENT WELL AS SHOWN ON MAP RECORDED IN VOLUME 36 OF MAPS & PLATS AT PAGE 40, S.J.C.R.
SET TWO (2) CONCRETE NAILS WITH BRASS TAGS "L.S. 6953" AS WITNESS CORNERS, ALL AS SHOWN ON
PAGE 2.

SURVEYOR'S STATEMENT

This Corner Record was prepared by me or under my direction in conformance with the Land Surveyors' Act on APRIL 15, 2020,

Signed [Signature] P.L.S. or R.C.E. Number 6953



COUNTY SURVEYOR'S STATEMENT

This Corner Record was received June 25, 2020 and examined and filed July 9, 2020

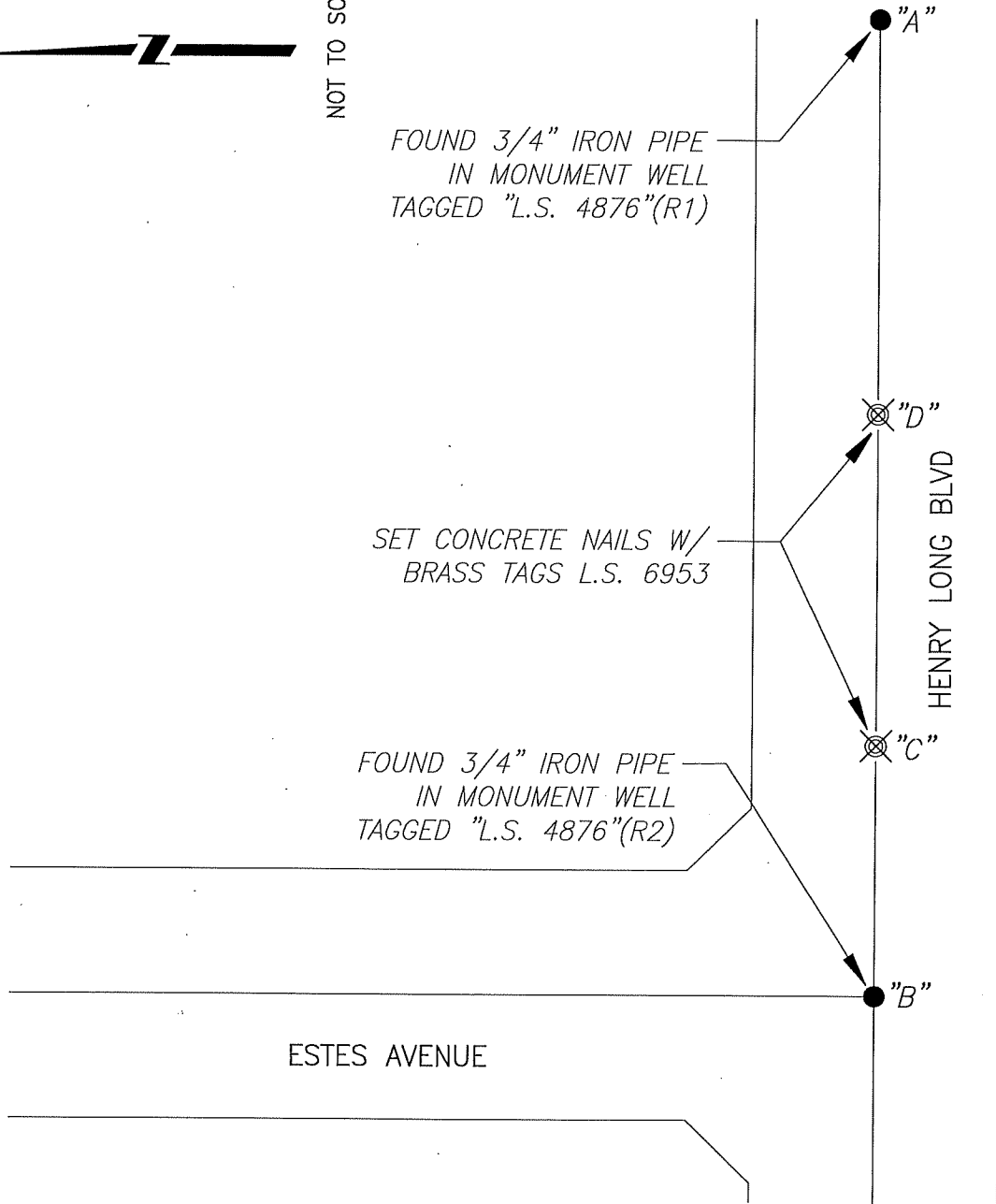
Signed James E. Hart P.L.S. or R.C.E. No: 8657
Title County Surveyor



County Surveyor's Comment _____



NOT TO SCALE



LEGEND:

- ⊗ SET MONUMENT AS NOTED.
- FOUND MONUMENT AS NOTED.
- M&P- MAPS AND PLATS
- PM- PARCEL MAPS
- S.J.C.R. SAN JOAQUIN COUNTY RECORDS
- (M) MEASURED DISTANCE. ALL DISTANCES ARE MEASURED UNLESS NOTED OTHERWISE.

X AND DISTANCE TABLE		
BS-@-FS	X	FS DISTANCE
B-A-B	00'00'00"	285.93'(M)
B-A-C	00'00'00"	212.66'(M)
B-A-D	00'00'00"	115.69'(M)

REFERENCES:

- (R1) 22-PM-2, S.J.C.R.
- (R2) 36-M&P-40, S.J.C.R.