

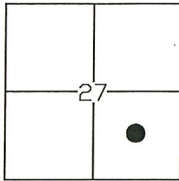
# CORNER RECORD

Agency Index: CR-20-121

Document Number: \_\_\_\_\_

City of STOCKTON County of SAN JOAQUIN, California

Brief Legal Description MONUMENTS AT THE INTERSECTION OF HENRY LONG BLVD AND STAR WAY/WOODHOLLOW AVENUE



T.1N, R.6E

### CORNER TYPE

- Government Corner
- Meander
- Rancho
- Control
- Property
- Other

Date of Survey 04-13-2020

### COORDINATES (Optional)

- N. \_\_\_\_\_ E. \_\_\_\_\_
- Elevation \_\_\_\_\_
- Units  Metric  U.S. Survey Foot
- Horizontal Datum \_\_\_\_\_
- Zone \_\_\_\_\_ Epoch Date \_\_\_\_\_
- Vertical Datum \_\_\_\_\_
- Complies with Public Resources Code SS8801-8819
- Complies with Public Resources Code SS8890-8902

PLS Act Ref:  8765(d)  8771  8773  Other: \_\_\_\_\_

Corner/Monument:  Left as found  Established  Rebuilt  Pre-Construction  
 Found and Tagged  Reestablished  Referenced  Post-Construction

Narrative of corner identified and monument as found, set, reset, replaced, or removed:

See sheet #2 for description(s):

FOUND FOUR (4) 3/4" IRON PIPES TAGGED "L.S. 4876", AND ONE (1) EMPTY MONUMENT WELL WITH TWO (2) MAGNAILS SET AS 2' SWINGTIES, ALL AS SHOWN ON THAT MAP RECORDED IN VOLUME 34 OF MAPS AND PLATS AT PAGE 41, S.J.C.R.

SET THREE (3) CONCRETE NAILS WITH BRASS TAGS "L.S. 6953" AS WITNESS CORNERS, ALL AS SHOWN ON PAGE 2.

### SURVEYOR'S STATEMENT

This Corner Record was prepared by me or under my direction in conformance with the Land Surveyors' Act on APRIL 15, 2020,



Signed [Signature] P.L.S. or R.C.E. Number 6953

### COUNTY SURVEYOR'S STATEMENT

This Corner Record was received June 25, 2020

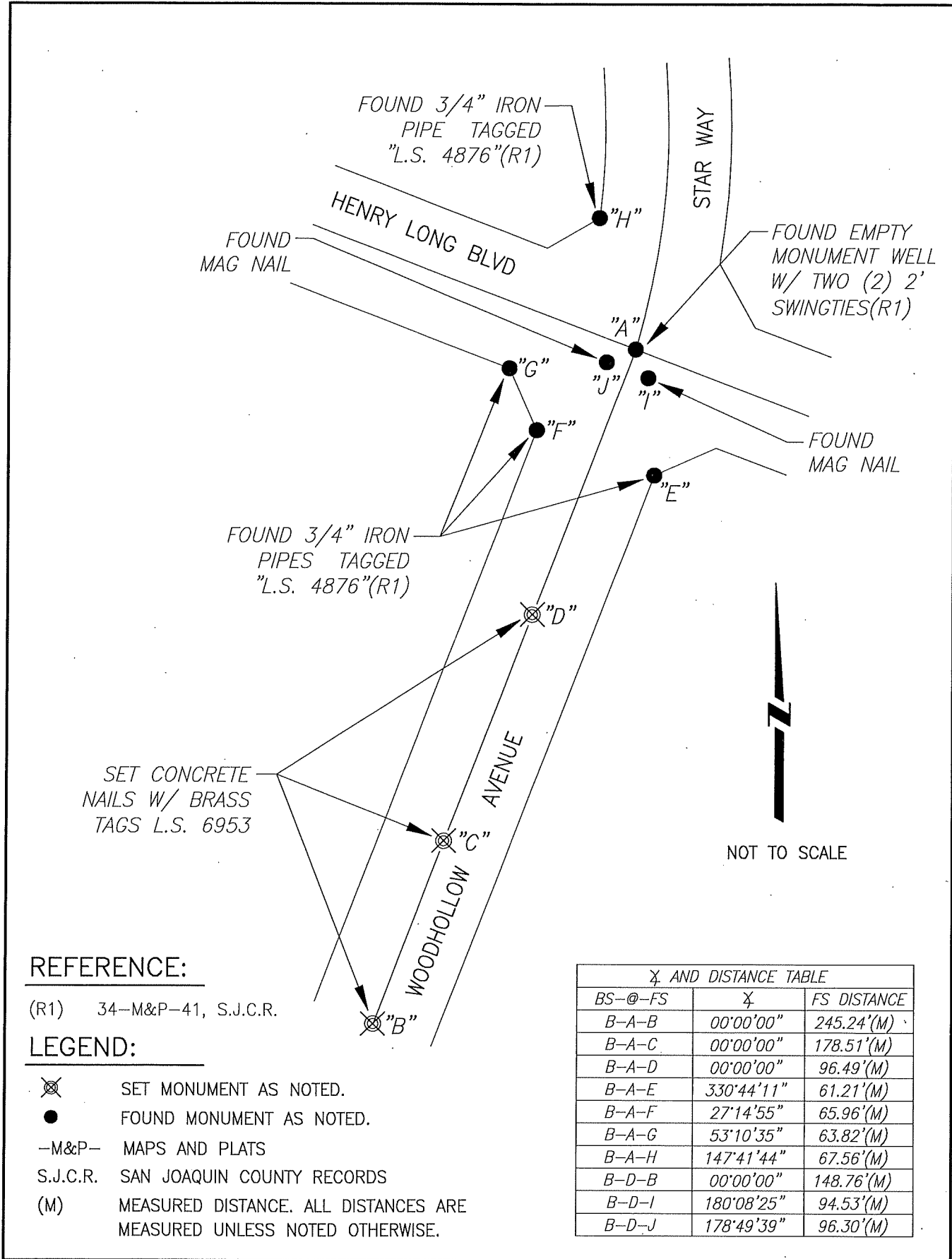
and examined and filed July 9, 2020

Signed James E. Hart P.L.S. or R.C.E. No: 8657

Title County Surveyor



County Surveyor's Comment \_\_\_\_\_



**REFERENCE:**

(R1) 34-M&P-41, S.J.C.R.

**LEGEND:**

- ⊗ SET MONUMENT AS NOTED.
- FOUND MONUMENT AS NOTED.
- M&P- MAPS AND PLATS
- S.J.C.R. SAN JOAQUIN COUNTY RECORDS
- (M) MEASURED DISTANCE. ALL DISTANCES ARE MEASURED UNLESS NOTED OTHERWISE.

∠ AND DISTANCE TABLE		
BS-@-FS	∠	FS DISTANCE
B-A-B	00°00'00"	245.24'(M)
B-A-C	00°00'00"	178.51'(M)
B-A-D	00°00'00"	96.49'(M)
B-A-E	330°44'11"	61.21'(M)
B-A-F	27°14'55"	65.96'(M)
B-A-G	53°10'35"	63.82'(M)
B-A-H	147°41'44"	67.56'(M)
B-D-B	00°00'00"	148.76'(M)
B-D-I	180°08'25"	94.53'(M)
B-D-J	178°49'39"	96.30'(M)