

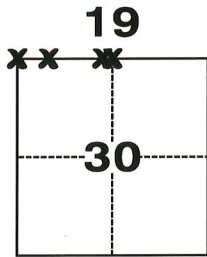
# CORNER RECORD

Agency Index CR-20-116

Document Number \_\_\_\_\_

City of MANTECA County of SAN JOAQUIN, California

Brief Legal Description: The common line between Section 19 and Section 30, T.1 S., R.7 E., M.D.M., along Lathrop Road from Airport Way to +/-200' East of London Avenue for the City of Manteca Lathrop Road Improvement Project.



### CORNER TYPE

- Government Corner     Control  
 Meander                     Property  
 Rancho                             Other

Date of Survey May 6, 2020

### COORDINATES (Optional)

N. \_\_\_\_\_ E. \_\_\_\_\_

Elevation \_\_\_\_\_

Units  Metric  U.S. Survey Foot

Horizontal Datum \_\_\_\_\_

Zone \_\_\_\_\_ Epoch Date \_\_\_\_\_

Vertical Datum \_\_\_\_\_

Complies with Public Resources Code §§8801-8819

Complies with Public Resources Code §§8890-8902

PLS Act Ref.:  8765(d)     8771     8773     Other:

Corner/Monument:  Left as found     Established     Rebuilt     Pre-Construction  
 Found and tagged     Reestablished     Referenced     Post-Construction

Narrative of corner identified and monument as found, set, reset, replaced, or removed: **FOUND FOUR IRON PIPE (IP) MONUMENTS IN WELLS AS SHOWN ON PAGE 2**  
 See Page 2 for description(s):

REFERENCES ARE FROM SAN JOAQUIN COUNTY RECORDS(SJCR) (-S- = BOOK OF SURVEYS, -MP- = BOOK OF MAPS AND PLATS); r1 = 36-S-23, r2 = 34-MP-102, r3 = 13-MP-139, r4 = 40-MP-90, M = MEASURED, and \* = CALCULATED FROM RECORD  
 ALL BEARINGS & DISTANCES ON PAGE 2 ARE MEASURED, UNLESS OTHERWISE NOTED.

ALL DISTANCES ON PAGE 2 ARE IN GROUND AND ARE FROM MONUMENT TO MONUMENT OR TIE AS SHOWN.  
 THE BEARING SOUTH 89°25'00" EAST FOR THE SOUTH LINE OF SECTION 19, T.1 S., R.7 E., M.D.M. AS SHOWN ON THE MAP OF UNION RANCH UNIT NO. 1 FILED IN BOOK 40 OF MAPS AND PLATS AT PAGE 90, SJCR (r4), WAS USED AS THE BASIS FOR ALL BEARINGS SHOWN ON PAGE 2.

### SURVEYOR'S STATEMENT

This Corner Record was prepared by me or under my direction in conformance with the Professional Land Surveyors' Act on June 11, 2020  
 Signed Scott Thomas De la Mare P.L.S. or R.C.E. No. 8078

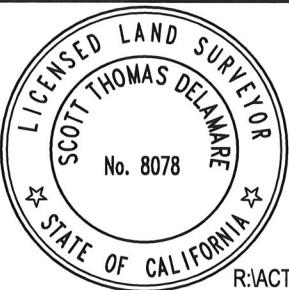
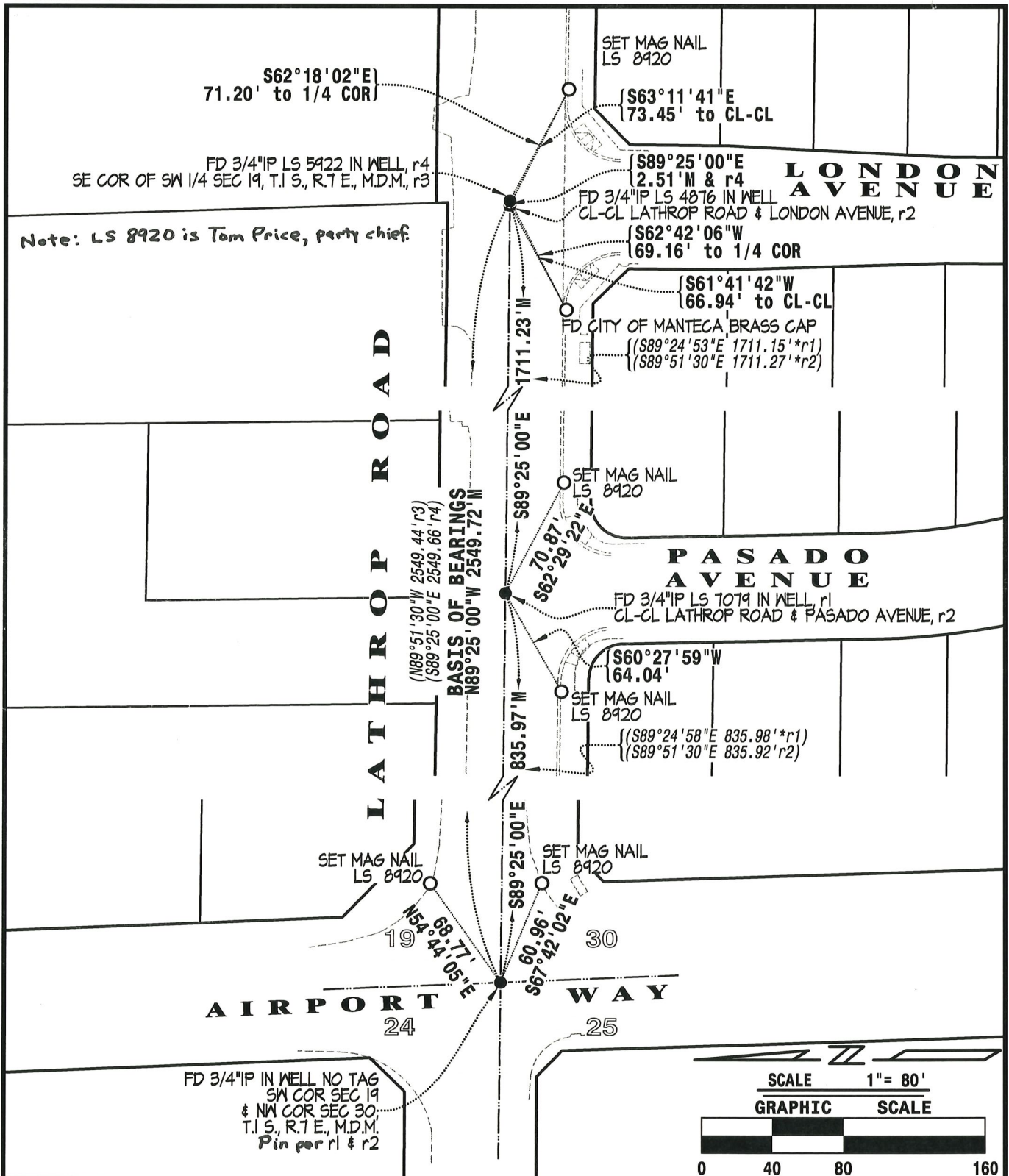


### COUNTY SURVEYOR'S STATEMENT

This Corner Record was received June 18, 2020  
 and examined and filed July 7, 2020  
 Signed James E Hart P.L.S. or R.C.E. No. 8657  
 Title County Surveyor



County Surveyor's Comment  
Hand edits by me.



**DF ENGINEERING, INC.**  
 CIVIL ENGINEERING AND SURVEYING  
 3421 TULLY ROAD · SUITE J · MODESTO, CA 95350  
 TELEPHONE (209) 529-7450 · EMAIL DFENGINEERING@DFENGINEERING.COM

SIGNED: *Scott Thomas Delamare* June 11, 2020  
**SCOTT THOMAS DELAMARE LS 8078 DATE**

R:\ACTIVE PROJ\2020\2007\Dwg\CorRec\2007CorRec.dwg, 2\_CorRecPlat, Jun 11, 2020, 10:46am, scott

PAGE	<b>2</b> OF 2
JOB	2007
AUTHOR	STD
CK. BY	NIP
SCALE	1" = 80'
DATE	June, 2020

