

# CORNER RECORD

Agency Index CR-20-115

Document Number \_\_\_\_\_

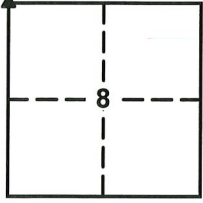
City of MANTECA

County of SAN JOAQUIN, California

Brief Legal Description The northwest corner of Section 8 T.2S. R.7E.

### CORNER TYPE

### COORDINATES (Optional)



SEC. 8  
T.2S.,R.7E.

Government Corner  Control  
 Meander  Property  
 Rancho  Other

N. \_\_\_\_\_ E. \_\_\_\_\_  
 Elevation \_\_\_\_\_  
 Units Metric  U.S. Survey Foot   
 Horizontal Datum \_\_\_\_\_  
 Zone \_\_\_\_\_ Epoch Date \_\_\_\_\_  
 Vertical Datum \_\_\_\_\_

Date of Survey January 2020

Complies with Public Resources Code §§8801-8819  
 Complies with Public Resources Code §§8890-8902

PLS Act Ref:  8765(d)  8771  8773  Other:

Corner/Monument:  Left as found  Established  Rebuilt  Pre-Construction  
 Found and tagged  Reestablished  Referenced  Post-Construction

Narrative of corner identified and monument as found, set, reset, replaced, or removed:

See sheet #2 for description (s):

Referencing a found disc in monument well marking the northwest corner of Section 8, Township 2 South, Range 7 East, being approximately 32.5 feet southerly of the southern most edge of deck of the SR120 & Union Road overpass. Said section corner is referenced by three nail & 13/16" brass tags stamped "RP LS 9313". Reference points were set to preserve monument location prior to construction. See sheet 2 for details.

### SURVEYOR'S STATEMENT

This Corner Record was prepared by me or under my direction in conformance with the Professional Land Surveyors' Act on June 5, 2020

Signed [Signature] P.L.S. or R.C.E. No. 9313



### COUNTY SURVEYOR'S STATEMENT

This Corner Record was received June 15, 2020

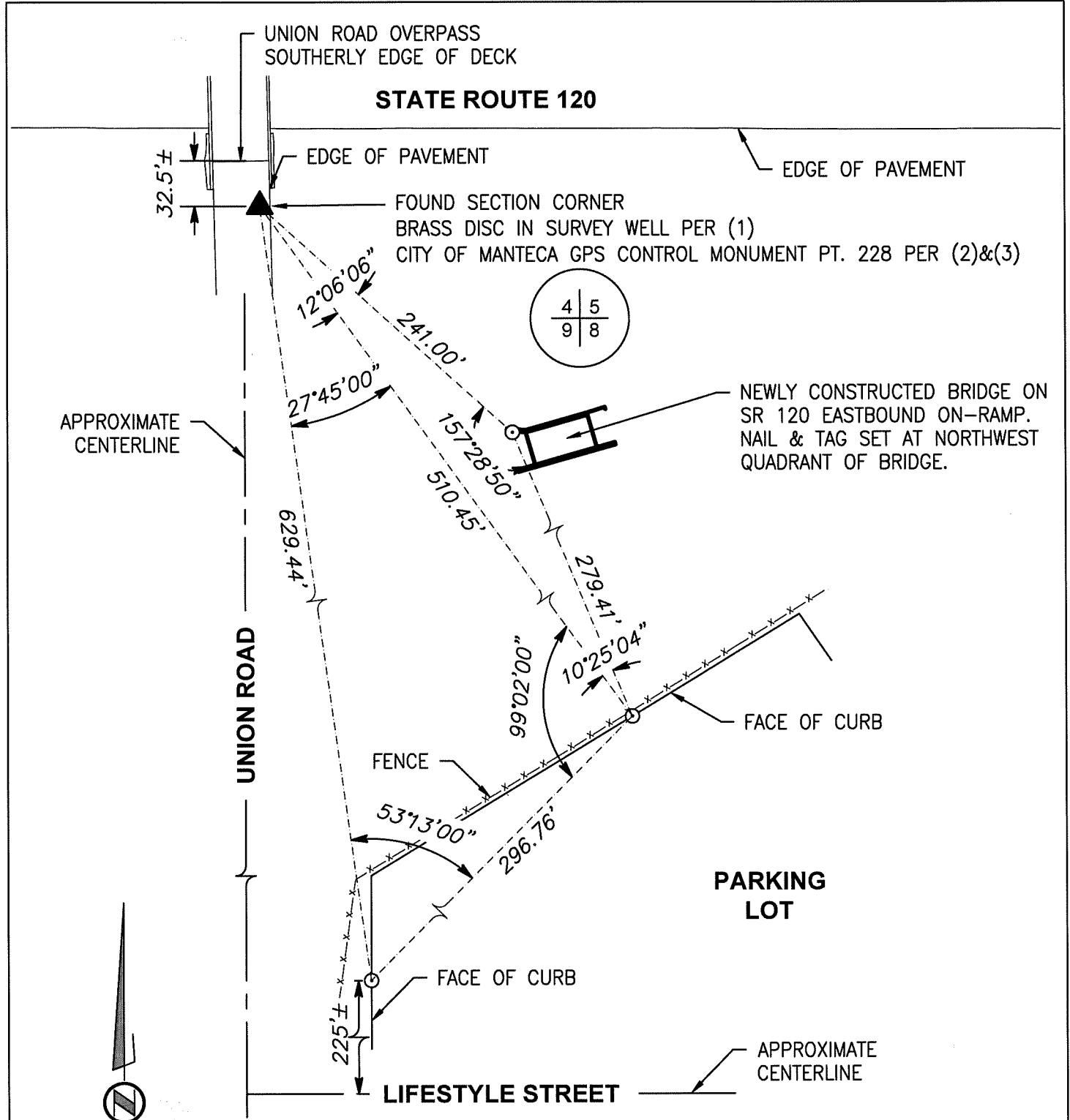
and examined and filed July 2, 2020

Signed James E. Hart P.L.S. or R.C.E. No. 8657

Title County Surveyor



County Surveyor's Comment \_\_\_\_\_



4	5
9	8

NOT TO SCALE

**MONUMENT NOTES**

- ▲ FOUND MONUMENT (AS NOTED)
- ⊙ SET NAIL & 13/16" BRASS TAG STAMPED "LS 9313"

**REFERENCES:**

- (1) BOOK 28 OF RECORD OF SURVEYS AT PAGE 129, SAN JOAQUIN COUNTY RECORDS
- (2) BOOK 24 OF PARCEL MAPS, AT PAGE 141, SAN JOAQUIN COUNTY RECORDS
- (3) BOOK 33 OF SURVEYS AT PAGE 133, SAN JOAQUIN COUNTY RECORDS

THE PURPOSE OF THIS RECORD IS TO DOCUMENT THE PERPETUATION OF FOUND MONUMENT(S) PURSUANT TO THE PLS ACT SECTION 8771.